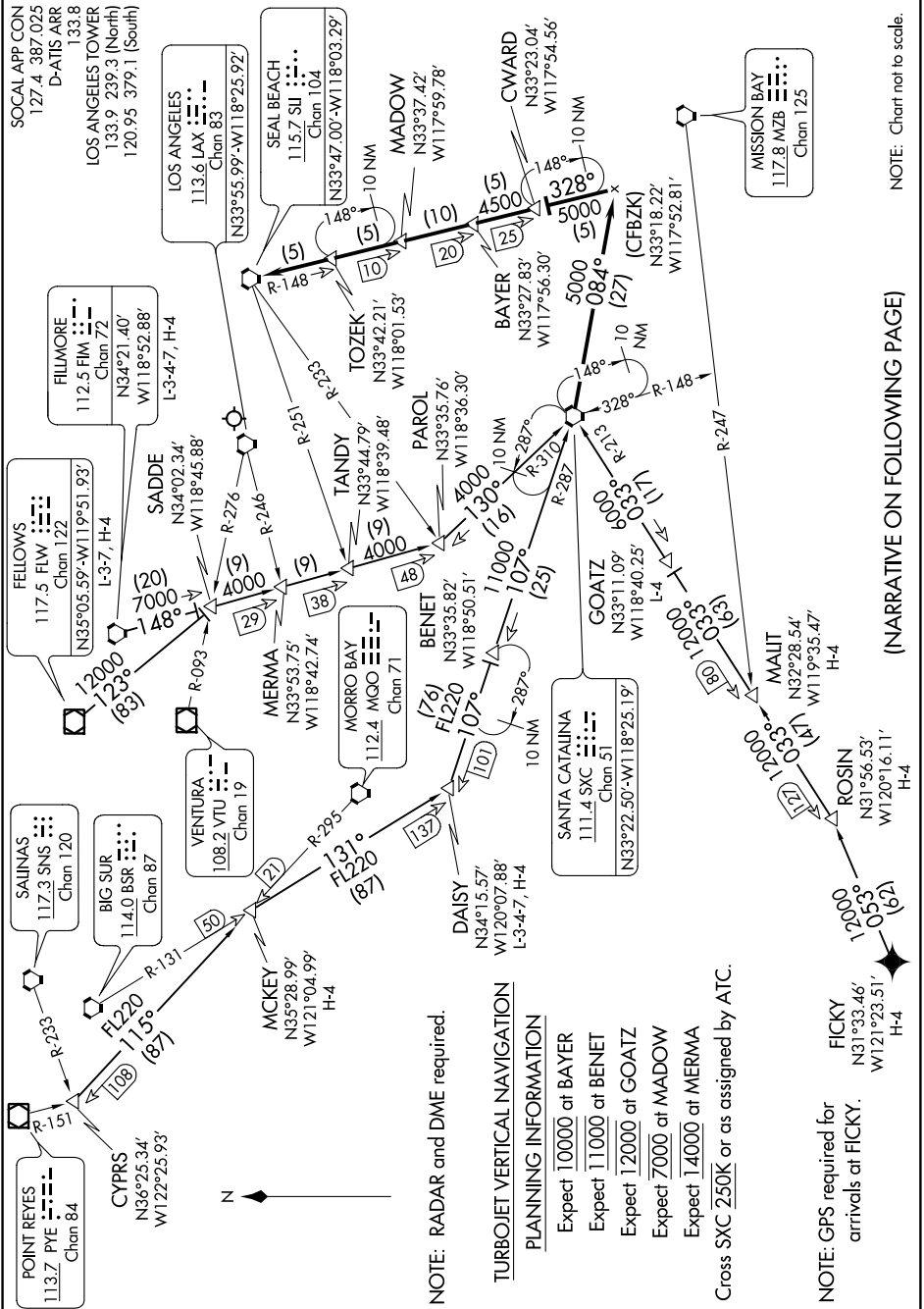


SW-3, 21 JUN 2018 to 19 JUL 2018



NOTE: RADAR and DME required.

TURBOJET VERTICAL NAVIGATION

- PLANNING INFORMATION
- Expect 10000 at BAYER
 - Expect 11000 at BENET
 - Expect 12000 at GOATZ
 - Expect 7000 at MADOW
 - Expect 14000 at MERMA

Cross SXC 250K or as assigned by ATC.

NOTE: GPS required for arrivals at FICKY.

- FICKY N31°33.46' W121°23.51' H-4
- ROSKIN N31°56.53' W120°16.11' H-4
- MALIT N32°28.54' W119°35.47' H-4

(NARRATIVE ON FOLLOWING PAGE)

SW-3, 21 JUN 2018 to 19 JUL 2018

NOTE: Chart not to scale.