

SW-3, 21 JUN 2018 to 19 JUL 2018

**TOP ALTITUDE:  
FL230**

**TAKEOFF MINIMUMS**

Rwys 6L/R, 7L/R: NA-ATC.  
Rwys 24L/R, 25L/R: Standard with minimum climb  
of 500' per NM to 640.

D-ATIS DEP  
135.65  
CUNCDL  
120.35 327.0  
CPDLC

GND CON

(N) 121.65 327.0

(S) 121.75 327.0

(W) 121.4 327.0

LOS ANGELES TOWER

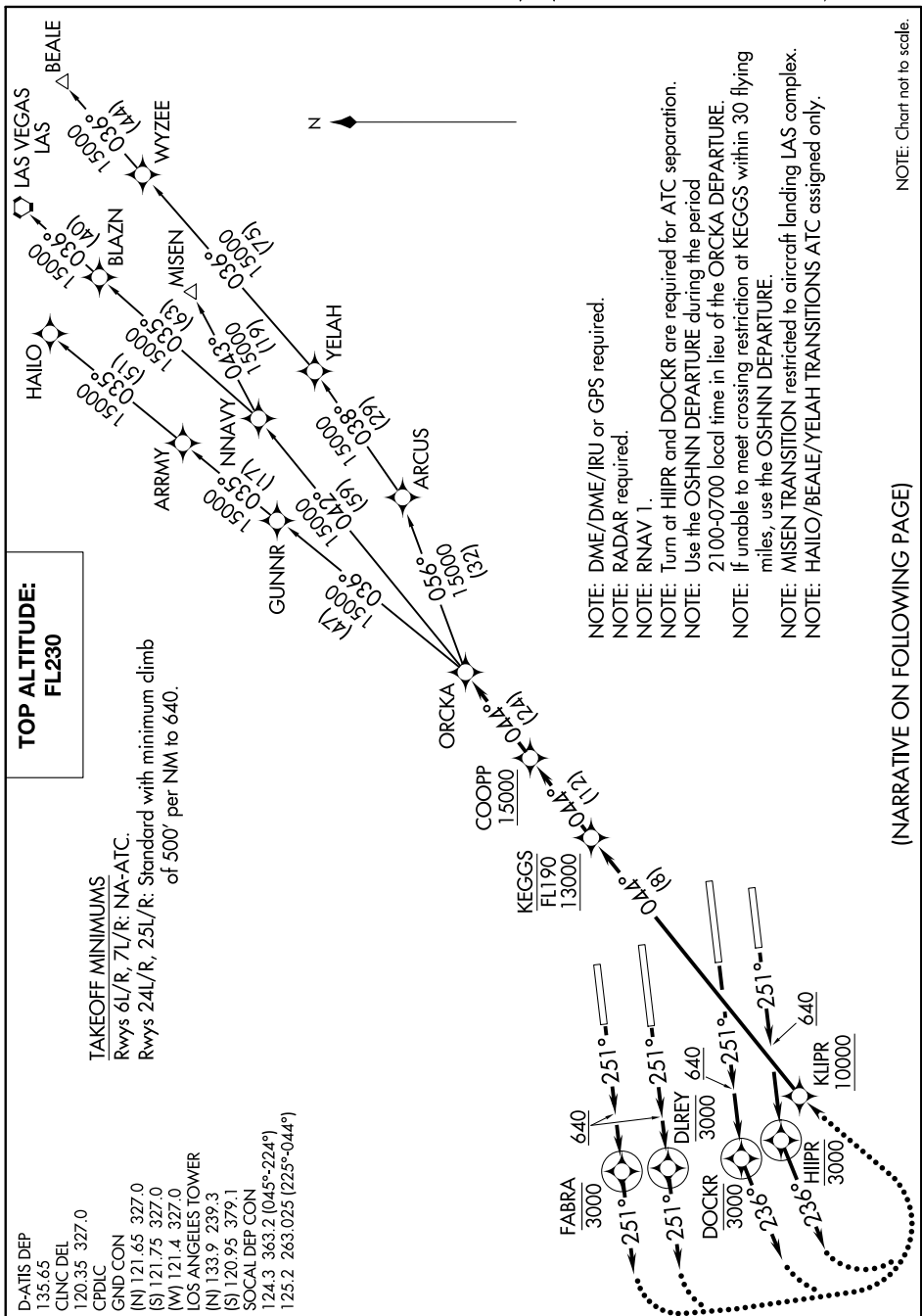
(N) 133.9 239.3

(S) 120.95 379.1

SOCAL DEP CON

124.3 363.2 (045°-224°)

125.2 263.025 (225°-044°)



NOTE: DME/DME/IRU or GPS required.  
 NOTE: RADAR required.  
 NOTE: RNAV 1.  
 NOTE: Turn at HIIPR and DOCKR are required for ATC separation.  
 NOTE: Use the OSHNN DEPARTURE during the period 2100-0700 local time in lieu of the ORCKA DEPARTURE.  
 NOTE: If unable to meet crossing restriction at KEGGS within 30 flying miles, use the OSHNN DEPARTURE.  
 NOTE: MISEN TRANSITION restricted to aircraft landing LAS complex.  
 NOTE: HAILO/BEALE/YELAH TRANSITIONS ATC assigned only.

(NARRATIVE ON FOLLOWING PAGE)

NOTE: Chart not to scale.

SW-3, 21 JUN 2018 to 19 JUL 2018