

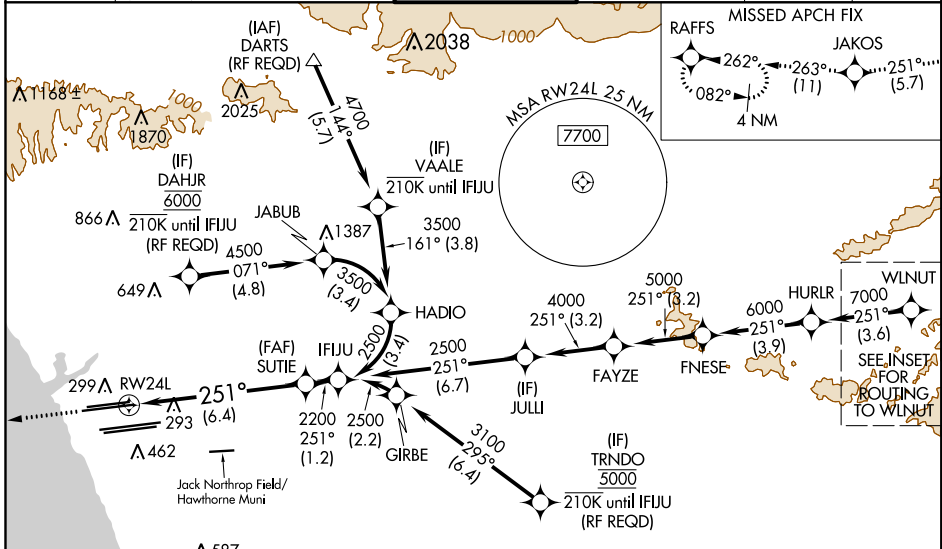
APP CRS	Rwy Idg	<b>9483</b>
<b>251°</b>	TDZE	<b>123</b>
	Apt Elev	<b>128</b>

# RNAV (RNP) Z RWY 24L

LOS ANGELES INTL (LAX)

<p><b>▼</b> For uncompensated Baro-VNAV systems, procedure NA below 5°C (41°F) or above 54°C (130°F). Simultaneous approach authorized. Simultaneous approach authorized with KHHR. GPS required. For inop ALS, increase RNP 0.15 all Cats visibility to 1½ SM.</p>	<p>MALSR</p>	<p>MISSED APPROACH: Climb to 2000 on track 251° to JAKOS and track 263° to RAFFS and hold.</p>
---	--------------	--

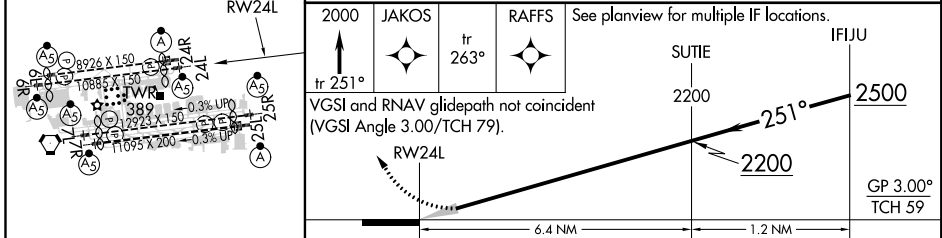
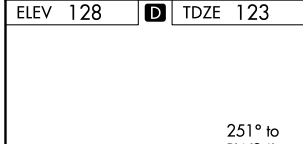
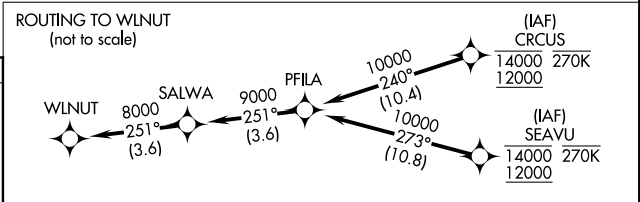
<p>D-ATIS</p> <p>ARR <b>133.8</b></p> <p>DEP <b>135.65</b></p>	<p>SOCAL APP CON</p> <p><b>124.3 363.2</b> (APCH FM WEST)</p> <p><b>124.9 269.0</b> (090°-224°)</p> <p><b>124.5 235.975</b> (225°-044°)</p> <p><b>128.5 360.7</b> (045°-089°)</p>	<p>LOS ANGELES TOWER</p> <p><b>N 133.9 239.3</b></p> <p><b>S 120.95 379.1</b></p>	<p>GND CON</p> <p><b>N 121.65 327.0</b></p> <p><b>S 121.75 327.0</b></p> <p><b>W 121.4 327.0</b></p>	<p>CLNC DEL</p> <p><b>120.35</b></p> <p><b>327.0</b></p>	<p>CPDLC</p>
--	---	---	--	--	--------------



SW-3, 21 JUN 2018 to 19 JUL 2018

SW-3, 21 JUN 2018 to 19 JUL 2018

ELEV <b>128</b>	<b>D</b>	TDZE <b>123</b>
-----------------	----------	-----------------



CATEGORY	A	B	C	D
RNP 0.15 DA		545/50	422 (500-1)	
RNP 0.30 DA		592/60	469 (500-1½)	

## AUTHORIZATION REQUIRED