

RNAV (RNP) Z RWY 24R

LOS ANGELES INTL (LAX)

| | | |
|-------------|----------|-------------|
| APP CRS | Rwy Idg | 8925 |
| 251° | TDZE | 122 |
| | Apt Elev | 128 |

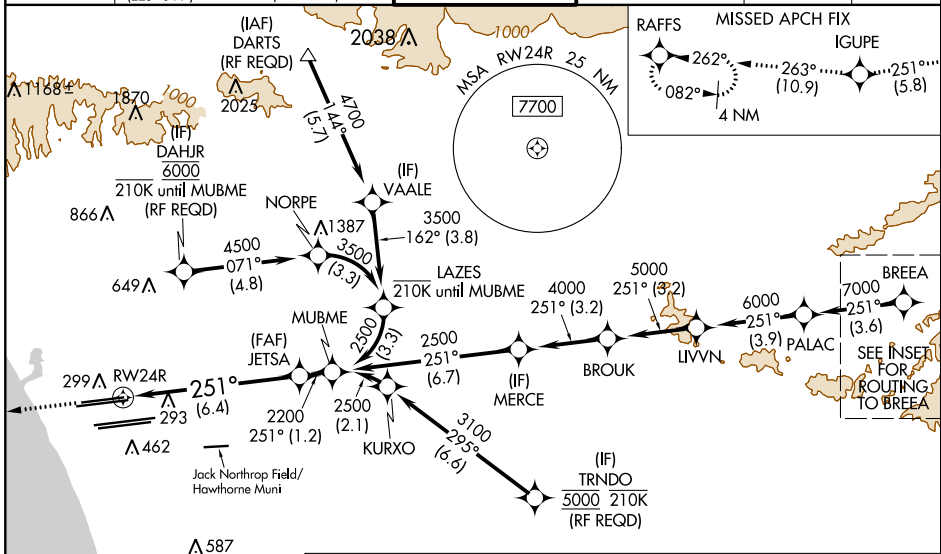
▽ For uncompensated Baro-VNAV systems, procedure NA below 5°C (41°F) or above 54°C (130°F). GPS required. For inop ALS, increase RNP 0.15 all Cats visibility to RVR 6000 and RNP 0.30 all Cats visibility to 1 1/2 SM. Simultaneous approach authorized. Simultaneous approach authorized with HHR.

ALSF-2

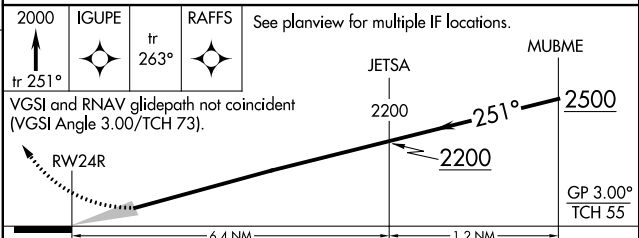
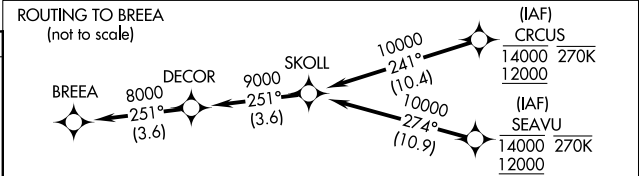
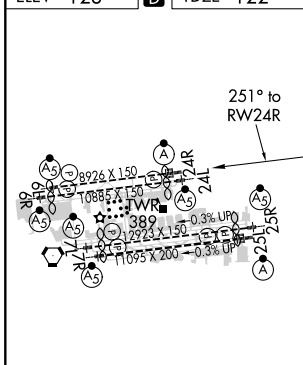


MISSED APPROACH: Climb to 2000 on track 251° to IGUPE and on track 263° to RAFFS and hold.

| | | | | | | | |
|-------------------|----------------------|--------------------|-----------------------|-----------------------|-----------------------|---------------|-------|
| D-ATIS | SOCAL APP CON | | LOS ANGELES TOWER | GND CON | | CLNC DEL | CPDLC |
| ARR 133.8 | 124.3 363.2 | 124.9 269.0 | N 133.9 239.3 | N 121.65 327.0 | S 121.75 327.0 | 120.35 | |
| DEF 135.65 | 124.5 235.975 | 128.5 360.7 | S 120.95 379.1 | W 121.4 327.0 | 327.0 | 327.0 | |
| | (APCH FM WEST) | (090°-224°) | | | | | |
| | (225°-044°) | (045°-089°) | | | | | |



| | | | | |
|------|------------|----------|------|------------|
| ELEV | 128 | D | TDZE | 122 |
|------|------------|----------|------|------------|



| | | | | |
|-------------|---|--------|--------------|---|
| CATEGORY | A | B | C | D |
| RNP 0.15 DA | | 484/40 | 362 (400-34) | |
| RNP 0.30 DA | | 586/60 | 464 (500-1¼) | |

TDZ/CL Rwy's 6R, 7L, 24R, and 25L
HIRL all Rwy's

AUTHORIZATION REQUIRED

SW-3, 21 JUN 2018 to 19 JUL 2018

SW-3, 21 JUN 2018 to 19 JUL 2018