

APP CRS	Rwy Idg	11095
251°	TDZE	104
	Apt Elev	128

RNAV (RNP) Z RWY 25L

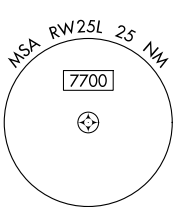
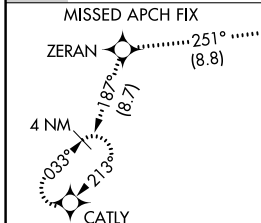
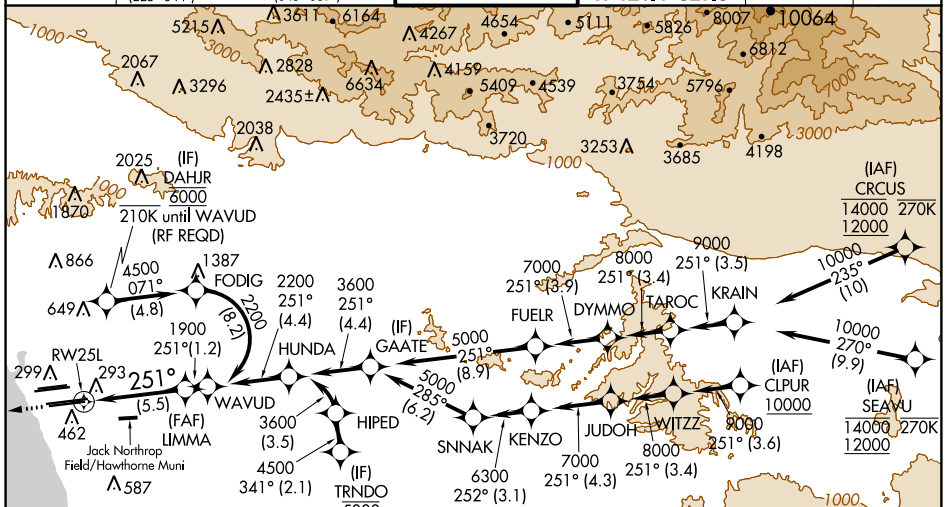
LOS ANGELES INTL (LAX)

For uncompensated Baro-VNAV systems, procedure NA below 5°C (41°F) or above 54°C (130°F).
GPS required. Simultaneous approach authorized.
Simultaneous approach authorized with HHR.

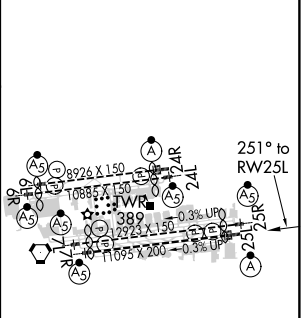
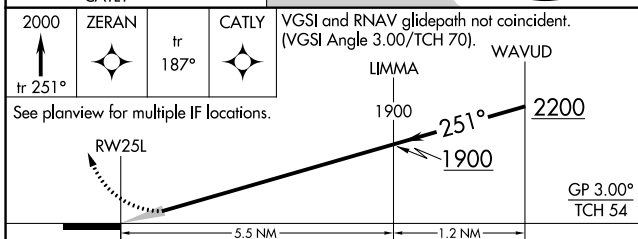


MISSED APPROACH: Climb to 2000 on track 251° to ZERAN and on track 187° to CATLY and hold.

D-ATIS ARR 133.8 DEP 135.65	SOCAL APP CON 124.3 363.2 (APCH FM WEST) 124.5 235.975 (225°-044°)	124.9 269.0 (090°-224°) 128.5 360.7 (045°-089°)	LOS ANGELES TOWER N 133.9 239.3 S 120.95 379.1	GND CON N 121.65 327.0 S 121.75 327.0 W 121.4 327.0	CLNC DEL 120.35 327.0	CPDLC
---	--	--	--	---	---	-------



ELEV 128	D TDZE 104
----------	-------------------



CATEGORY	A	B	C	D
RNP 0.15 DA		445/30	341 (400-5%)	
RNP 0.30 DA		543/50	439 (500-1)	

AUTHORIZATION REQUIRED

TDZ/CL Rwws 6R, 7L, 24R, and 25L
HIRL all Rwws

SW-3, 21 JUN 2018 to 19 JUL 2018

SW-3, 21 JUN 2018 to 19 JUL 2018