


APP CRS	Rwy Idg	<b>11134</b>
<b>251°</b>	TDZE	<b>104</b>
	Apt Elev	<b>128</b>

# RNAV (RNP) Z RWY 25R

LOS ANGELES INTL (LAX)

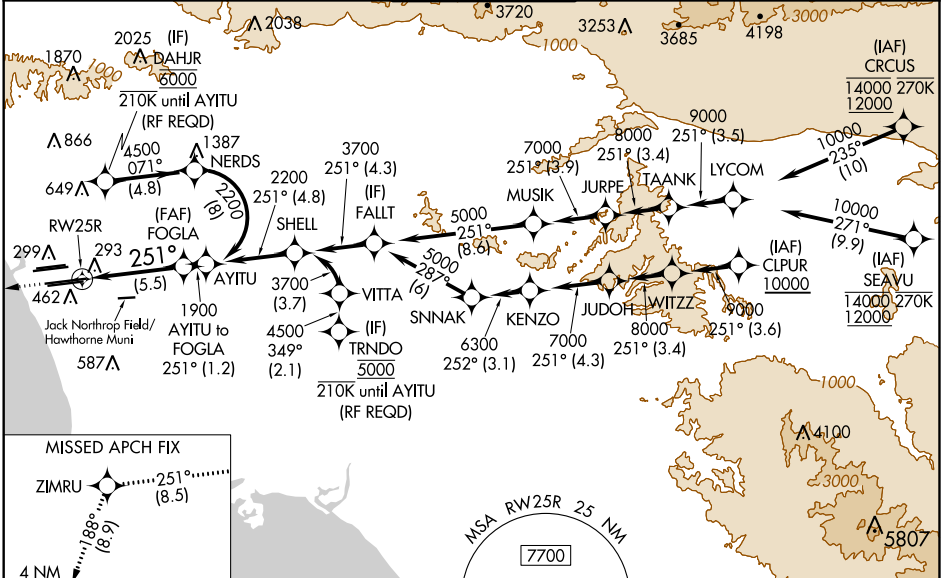
For uncompensated Baro-VNAV systems, procedure NA below 5°C (41°F) or above 54°C (130°F). Simultaneous approach authorized. Simultaneous approach authorized with HHR. GPS required. For inop ALS, increase RNP 0.11 all Cats visibility to RVR 6000.

MALSR

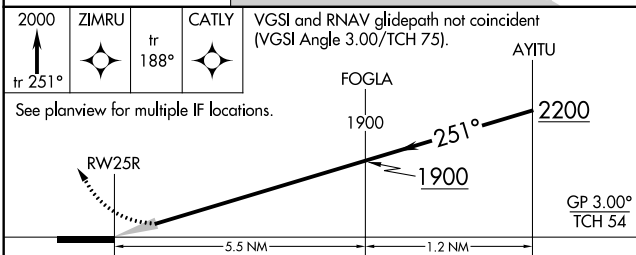


MISSED APPROACH: Climb to 2000 on track 251° to ZIMRU and track 188° to CATLY and hold.

D-ATIS	SOCAL APP CON		LOS ANGELES TOWER		GND CON		CLNC DEL	CPDLC
ARR <b>133.8</b>	<b>124.3</b>	<b>363.2</b>	<b>124.9</b>	<b>269.0</b>	<b>N 133.9</b>	<b>327.0</b>	<b>120.35</b>	
DEF <b>135.65</b>	<b>124.5</b>	<b>235.975</b>	<b>128.5</b>	<b>360.7</b>	<b>S 120.95</b>	<b>327.1</b>	<b>327.0</b>	
	(APCH FM WEST)	(090°-224°)	(045°-089°)		<b>N 121.65</b>	<b>327.0</b>		
	(225°-044°)				<b>S 121.75</b>	<b>327.0</b>		
					<b>W 121.4</b>	<b>327.0</b>		



ELEV 128	TDZE 104
----------	----------



CATEGORY	A	B	C	D
RNP 0.11 DA		453/40	349 (400-¾)	
RNP 0.30 DA		544/50	440 (500-1)	

## AUTHORIZATION REQUIRED

Detailed diagram of the final approach segment. It shows the glidepath from 2000 feet at ZIMRU to 2200 feet at AYITU. Key altitudes include 1900, 1826, 150, 1085, 150, 389, 1095, 200, 0.3% UPR, 250, and 200. Distances are marked in NM and miles. The diagram also shows the MALSR and various navigation aids.

SW-3, 21 JUN 2018 to 19 JUL 2018

SW-3, 21 JUN 2018 to 19 JUL 2018