


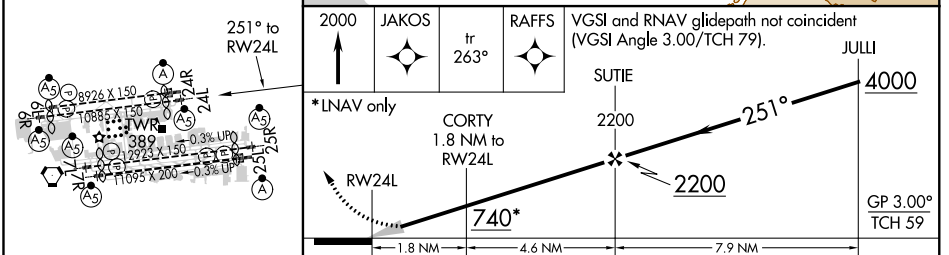
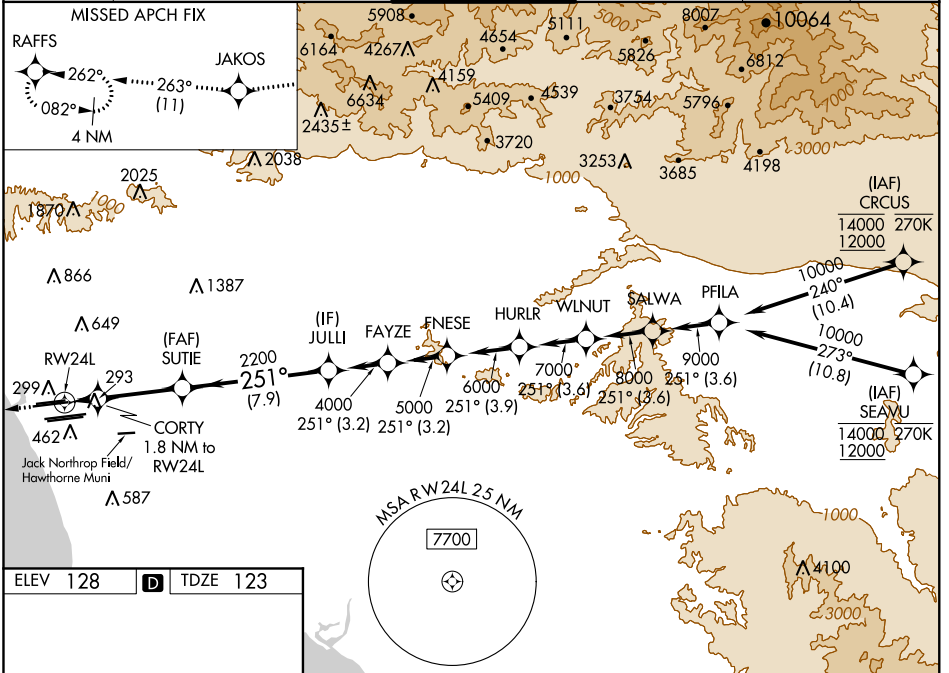
# RNAV (GPS) Y RWY 24L

LOS ANGELES INTL (LAX)

WAAS CH <b>56407</b> <b>W24B</b>	APP CRS <b>251°</b>	Rwy Idg TDZE Apt Elev	<b>9483</b> <b>123</b> <b>128</b>
--	------------------------	-----------------------------	---

RNP APCH.	<p>▼ For uncompensated Baro-VNAV systems, LNAV/VNAV NA below 5°C (41°F) or above 54°C (130°F). Simultaneous approach authorized. LNAV procedure NA during simultaneous operations. Use of FD or AP providing RNAV track guidance required during simultaneous operations. Simultaneous approach authorized with HHR. #RVR 1800 authorized with use of FD or AP or HUD to DA.</p>	<p>MALSR</p> 	<p>MISSED APPROACH: Climb to 2000 direct JAKOS and track 263° to RAFFS and hold.</p>

D-ATIS ARR <b>133.8</b> DEP <b>135.65</b>	SOCAL APP CON <b>124.3 363.2</b> (APCH FM WEST) <b>124.5 235.975</b> (223°-044°)	<b>124.9 269.0</b> (090°-224°) <b>128.5 360.7</b> (043°-089°)	LOS ANGELES TOWER <b>N 133.9 239.3</b> <b>S 120.95 379.1</b>	GND CON <b>N 121.65 327.0</b> <b>S 121.75 327.0</b> <b>W 121.4 327.0</b>	CLNC DEL <b>120.35</b> <b>327.0</b>	CPDLC
---	--	--	--	---	---	-------



ELEV 128	<b>D</b>	TDZE 123			
LPV	DA#	323/24	200 (200-½)		
LNAV/VNAV	DA	608/60	485 (500-1¼)		
LNAV	MDA	660/24	537 (600-½)	660/55	537 (600-1¼)

LOS ANGELES, CALIFORNIA  
Amdt 5B 21JUN18

33°57'N-118°24'W

# RNAV (GPS) Y RWY 24L

SW-3, 21 JUN 2018 to 19 JUL 2018

SW-3, 21 JUN 2018 to 19 JUL 2018