

# SUMMR ONE DEPARTURE (RNAV)

AL-237 (FAA)

LOS ANGELES INTL (LAX)  
LOS ANGELES, CALIFORNIA

SW-3, 21 JUN 2018 to 19 JUL 2018

**TOP ALTITUDE:  
FL230**

### TAKEOFF MINIMUMS

Rwys 6L/R, 7L/R: NA - ATC.

Rwys 24L/R, 25L/R: Standard with a minimum climb of 500' per NM to 640'.

NOTE: RNAV 1.

NOTE: RADAR required.

NOTE: STOKD, SCTRR and MCKEY transitions:

DME/DME/IRU or GPS required.

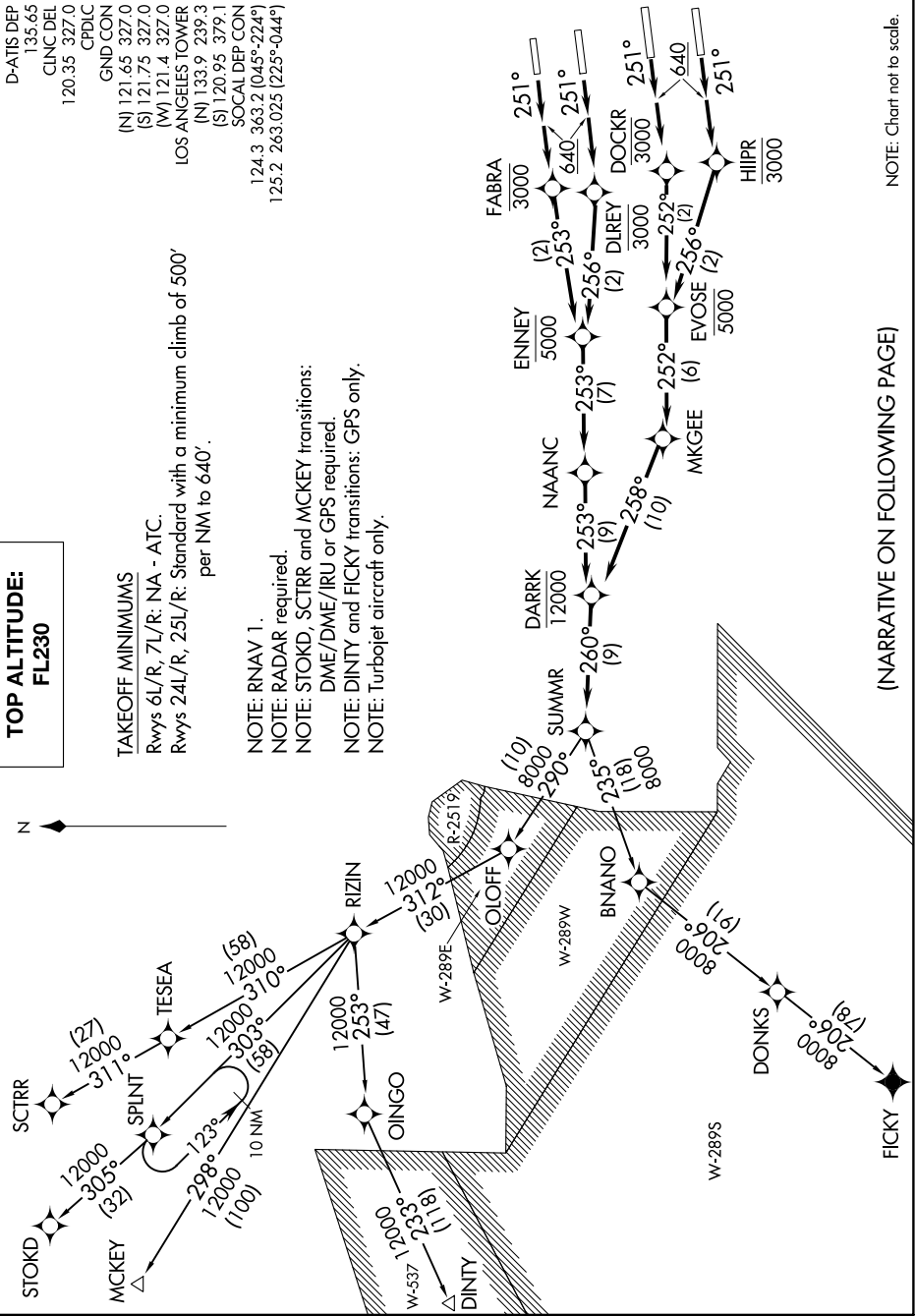
NOTE: DINTY and FICKY transitions: GPS only.

NOTE: Turbojet aircraft only.

D-ATIS DEP  
135.65  
CLNC DEL  
120.35 327.0  
CPDLC  
GND CON  
(N) 121.65 327.0  
(S) 121.75 327.0  
(W) 121.4 327.0

LOS ANGELES TOWER  
(N) 133.9 239.3  
(S) 120.95 379.1

SOCAL DEP CON  
124.3 363.2 (045°-224°)  
125.2 263.025 (225°-044°)



(NARRATIVE ON FOLLOWING PAGE)

NOTE: Chart not to scale.

# SUMMR ONE DEPARTURE (RNAV)

LOS ANGELES, CALIFORNIA  
LOS ANGELES INTL (LAX)

SW-3, 21 JUN 2018 to 19 JUL 2018