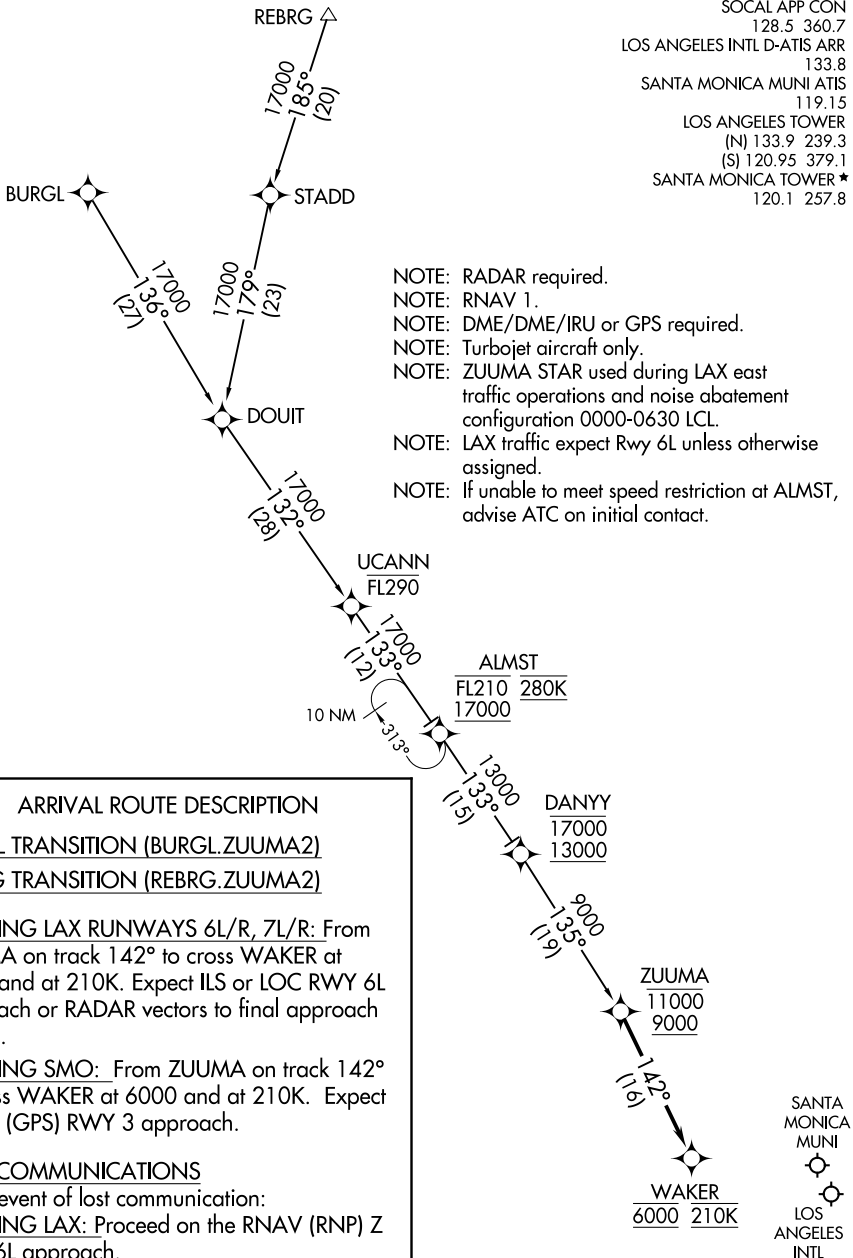


SOCAL APP CON  
 128.5 360.7  
 LOS ANGELES INTL D-ATIS ARR  
 133.8  
 SANTA MONICA MUNI ATIS  
 119.15  
 LOS ANGELES TOWER  
 (N) 133.9 239.3  
 (S) 120.95 379.1  
 SANTA MONICA TOWER ★  
 120.1 257.8



- NOTE: RADAR required.
- NOTE: RNAV 1.
- NOTE: DME/DME/IRU or GPS required.
- NOTE: Turbojet aircraft only.
- NOTE: ZUUMA STAR used during LAX east traffic operations and noise abatement configuration 0000-0630 LCL.
- NOTE: LAX traffic expect Rwy 6L unless otherwise assigned.
- NOTE: If unable to meet speed restriction at ALMST, advise ATC on initial contact.

ARRIVAL ROUTE DESCRIPTION

BURGL TRANSITION (BURGL.ZUUMA2)  
REBRG TRANSITION (REBRG.ZUUMA2)

LANDING LAX RUNWAYS 6L/R, 7L/R: From ZUUMA on track 142° to cross WAKER at 6000 and at 210K. Expect ILS or LOC RWY 6L approach or RADAR vectors to final approach course.

LANDING SMO: From ZUUMA on track 142° to cross WAKER at 6000 and at 210K. Expect RNAV (GPS) RWY 3 approach.

LOST COMMUNICATIONS

In the event of lost communication:  
LANDING LAX: Proceed on the RNAV (RNP) Z RWY 6L approach.  
LANDING SMO: Proceed on the RNAV (GPS) RWY 3 approach.

NOTE: Chart not to scale.

SW-3, 21 JUN 2018 to 19 JUL 2018

SW-3, 21 JUN 2018 to 19 JUL 2018