

HI-ILS or LOC/DME RWY 25

LOC I-PMD 110.7	APCH CRS 254°	Rwy Idg 12,002 TDZE 2503 Arpt Elev 2543
---------------------------	-------------------------	--

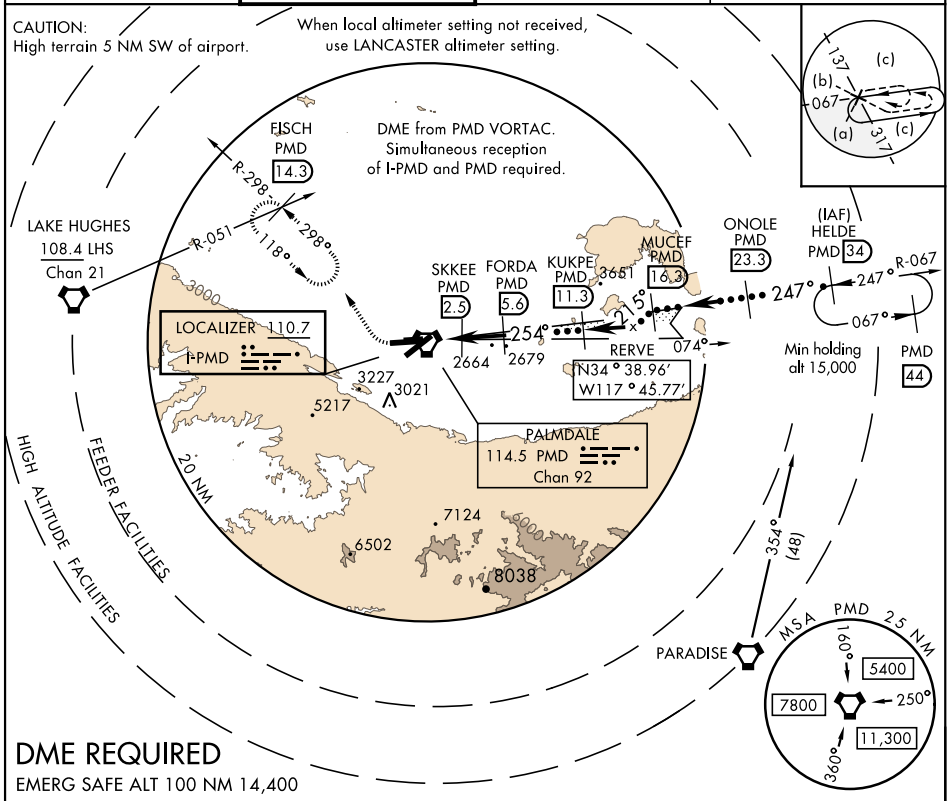
JAL-310 [USAF]

PALMDALE USAF PLANT 42 (KPMD)

▼ * Circling NA south of Rws 4 and 25.
▲

MISSED APPROACH: Climb to 3000 then climbing right turn on heading 318° and PMD VORTAC R-298 to FISCH INT/PMD 14.3 DME/RADAR and hold, continue climb-in-hold to 6700.

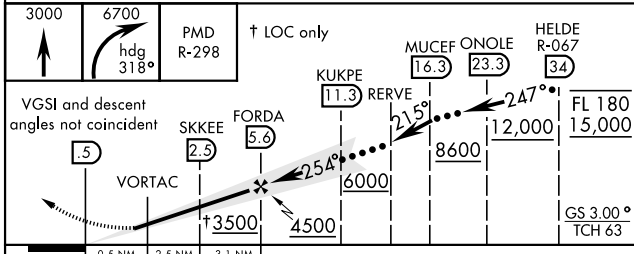
JOSHUA APP CON 124.55 363.0	PALMDALE TOWER ★ 123.7 (CTAF) 0 317.6	GND CON 121.9 348.6	ATIS 118.275
---------------------------------------	---	-------------------------------	------------------------



SW-3, 21 JUN 2018 to 19 JUL 2018

SW-3, 21 JUN 2018 to 19 JUL 2018

DME REQUIRED
EMERG SAFE ALT 100 NM 14,400



ELEV 2543	TDZE 2503												
REIL Rwy 4-22, 7-25 254° 6.1 NM from FAF HIRL Rwy 4-22, 7-25													
FAF to MAP 6.1 NM													
<table border="1"> <tr> <th>Knots</th> <td>60</td> <td>90</td> <td>120</td> <td>150</td> <td>180</td> </tr> <tr> <th>Min:Sec</th> <td>6:06</td> <td>4:04</td> <td>3:03</td> <td>2:26</td> <td>2:02</td> </tr> </table>		Knots	60	90	120	150	180	Min:Sec	6:06	4:04	3:03	2:26	2:02
Knots	60	90	120	150	180								
Min:Sec	6:06	4:04	3:03	2:26	2:02								

HI-ILS or LOC/DME RWY 25