

WAAS CH 86520 W25A	APP CRS 254°	Rwy Idg 12002 TDZE 2503 Apt Elev 2543
--	------------------------	--

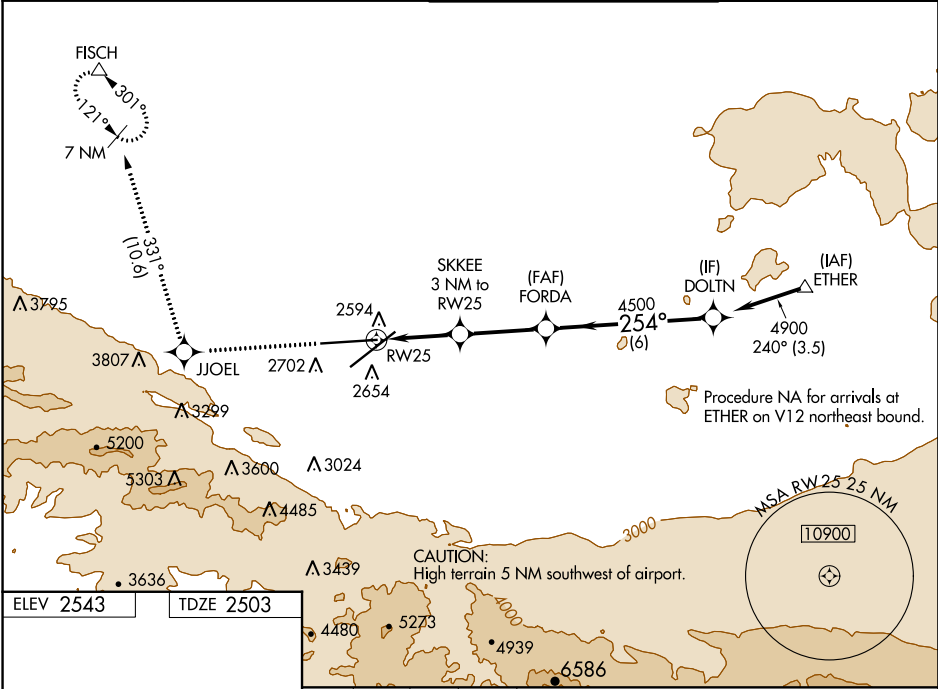
RNAV (GPS) RWY 25

PALMDALE USAF PLANT 42 (PMD)

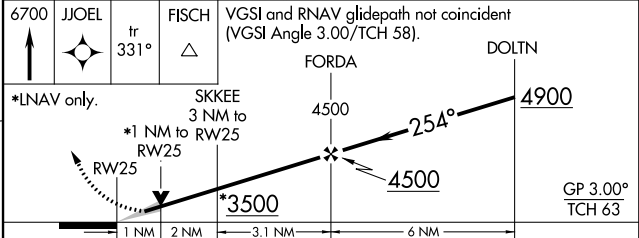
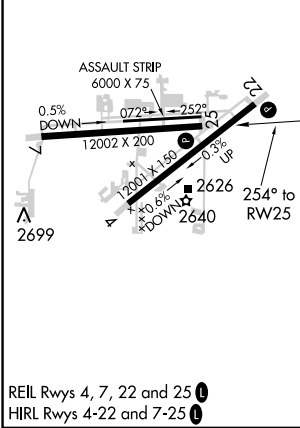
⚠ For uncompensated Baro-VNAV systems, LNAV/VNAV NA below -6°C (22°F) or above 50°C (123°F). Circling NA for Cats C and D south of Rwy 4 and 25. DME/DME RNP-0.3 NA.

MISSED APPROACH: Climb 6700 direct JJOEL and on track 331° direct FISCH and hold, continue climb-in-hold to 6700.

ATIS 118.275	JOSHUA APP CON 124.55 363.0	PALMDALE TOWER * 123.7 (CTAF) 0 317.6	GND CON 121.9 317.6
------------------------	---------------------------------------	--	-------------------------------



ELEV 2543	TDZE 2503
-----------	-----------



CATEGORY	A	B	C	D
LPV DA		2703-3/4	200 (200-3/4)	
LNAV/VNAV DA		2806-1	303 (300-1)	
LNAV MDA		2880-1	377 (400-1)	
C CIRCLING	3020-1 477 (500-1)	3060-1 517 (600-1)	3140-1 1/2 597 (600-1 1/2)	3740-3 1197 (1200-3)

PALMDALE, CALIFORNIA
Amdt 2 24MAY18

34°38'N-118°05'W

PALMDALE USAF PLANT 42 (PMD) RNAV (GPS) RWY 25

SW-3, 21 JUN 2018 to 19 JUL 2018

SW-3, 21 JUN 2018 to 19 JUL 2018