

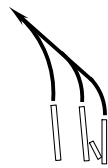
# ARCHZ ONE DEPARTURE (RNAV)

AL-365 (FAA)

SALT LAKE CITY INTL (SLC)  
SALT LAKE CITY, UTAH

D-ATIS  
 124.75 125.625  
 CLNC DEL  
 127.3 379.975  
 CPDLC  
 GND CON  
 121.9 348.6 (Rwys 14-32, 17-35)  
 123.775 348.6 (Rwys 16L-34R, 16R-34L)  
 SALT LAKE CITY TOWER  
 119.05 257.8 (Rwy 16L-34R)  
 118.3 257.8 (Rwys 14-32, 17-35)  
 132.65 336.4 (Rwy 16R-34L)  
 SALT LAKE CITY DEP CON  
 128.1 307.05

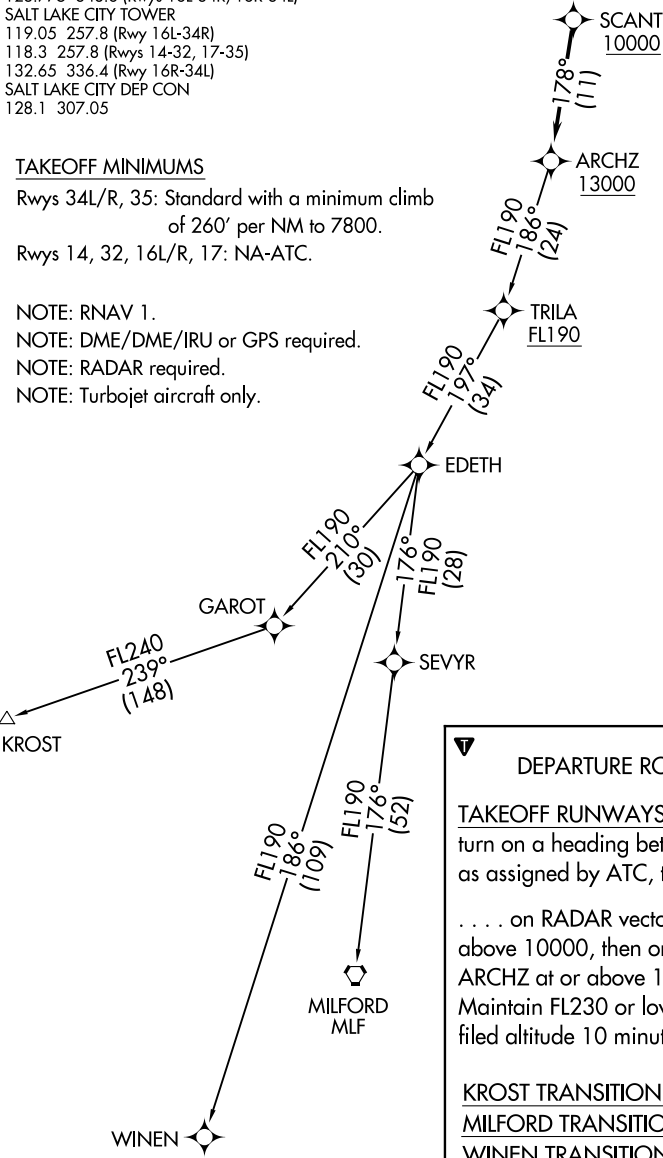
**TOP ALTITUDE:  
FL230**



### TAKEOFF MINIMUMS

Rwys 34L/R, 35: Standard with a minimum climb  
of 260' per NM to 7800.  
 Rwys 14, 32, 16L/R, 17: NA-ATC.

- NOTE: RNAV 1.
- NOTE: DME/DME/IRU or GPS required.
- NOTE: RADAR required.
- NOTE: Turbojet aircraft only.



NOTE: Chart not to scale.

**DEPARTURE ROUTE DESCRIPTION**

TAKEOFF RUNWAYS 34L/R, 35: Climbing left turn on a heading between 320° CCW 260° as assigned by ATC, thence . . . .

. . . . on RADAR vectors to cross SCANT at or above 10000, then on track 178° to cross ARCHZ at or above 13000, then on (transition). Maintain FL230 or lower filed altitude. Expect filed altitude 10 minutes after departure.

KROST TRANSITION (ARCHZ1.KROST)  
MILFORD TRANSITION (ARCHZ1.MLF)  
WINEN TRANSITION (ARCHZ1.WINEN)

SW-4, 21 JUN 2018 to 19 JUL 2018

SW-4, 21 JUN 2018 to 19 JUL 2018