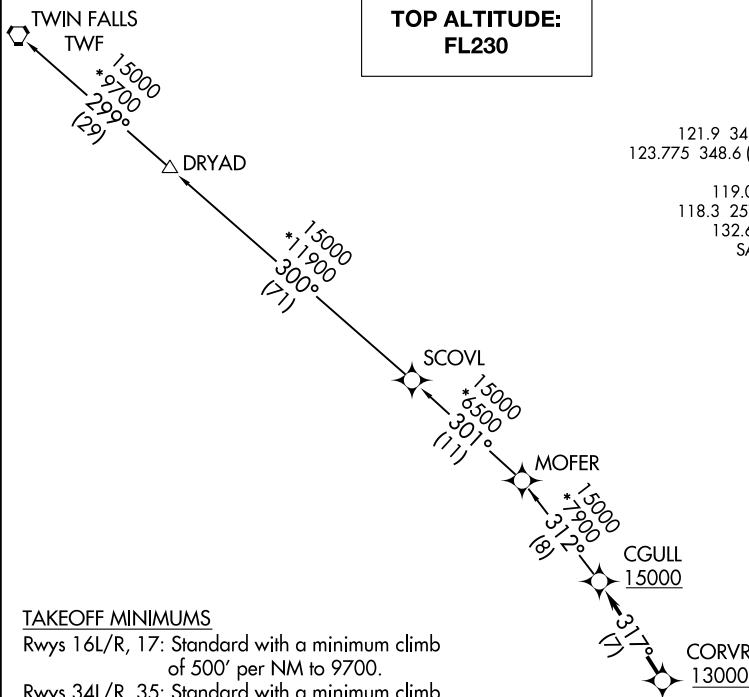


**TOP ALTITUDE:  
FL230**

D-ATIS  
124.75 125.625  
CLNC DEL  
127.3 379.975  
CPDLC  
GND CON  
121.9 348.6 (Rwys 14-32, 17-35)  
123.775 348.6 (Rwys 16L-34R, 16R-34L)  
SALT LAKE CITY TOWER  
119.05 257.8 (Rwy 16L-34R)  
118.3 257.8 (Rwys 14-32, 17-35)  
132.65 336.4 (Rwy 16R-34L)  
SALT LAKE CITY DEP CON  
126.25 353.825



**TAKEOFF MINIMUMS**

Rwys 16L/R, 17: Standard with a minimum climb of 500' per NM to 9700.

Rwys 34L/R, 35: Standard with a minimum climb of 260' per NM to 7800.

Rwys 14, 32: NA - ATC

NOTE: RNAV 1.

NOTE: DME/DME/IRU or GPS required.

NOTE: RADAR required.

NOTE: Turbojet aircraft only.

NOTE: Aircraft landing Twin Falls Airport, file DRYAD transition.

NOTE: Chart not to scale.

**DEPARTURE ROUTE DESCRIPTION**

**TAKEOFF RUNWAYS 16L/R, 17:** Climbing right turn on a heading between 280° CW 340° as assigned by ATC, thence. . . .

**TAKEOFF RUNWAYS 34L/R, 35:** Climbing left turn on a heading between 320° CCW 260° as assigned by ATC, thence. . . .

. . . .on RADAR vectors to cross CORVR at or above 13000, then on track 317° to cross CGULL at or above 15000, then on (transition). Maintain FL230 or lower filed altitude. Expect filed altitude 10 minutes after departure.

DRYAD TRANSITION (CGULL1.DRYAD)

TWIN FALLS TRANSITION (CGULL1.TWF)



SW-4, 21 JUN 2018 to 19 JUL 2018

SW-4, 21 JUN 2018 to 19 JUL 2018