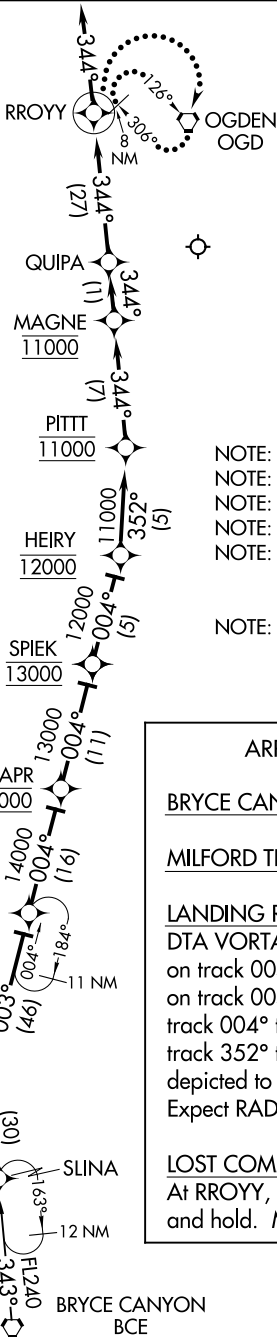


# DELTA FIVE ARRIVAL (RNAV)

AL-365 (FAA)

SALT LAKE CITY INTL (SLC)  
SALT LAKE CITY, UTAH

SALT LAKE CITY APP CON  
128.1 307.05  
D-ATIS  
124.75 125.625



- NOTE: RADAR required.
- NOTE: RNAV 1.
- NOTE: DME/DME/IRU or GPS required.
- NOTE: Turbojet aircraft only.
- NOTE: BCE TRANSITION: For non-GPS equipped aircraft, BVL, FFU, TCH, and OGD DMEs must be operational.
- NOTE: MLF TRANSITION: For non-GPS equipped aircraft, BVL, TCH, and OGD DMEs must be operational.

### ARRIVAL ROUTE DESCRIPTION

#### BRYCE CANYON TRANSITION (BCE.DELTA5)

#### MILFORD TRANSITION (MLF.DELTA5)

LANDING RUNWAYS 16L/R, and 17: From DTA VORTAC on track 003° to JAMMN, then on track 004° to cross DRAPR at 14000, then on track 004° to cross SPIEK at 13000, then on track 004° to cross HEIRY at 12000, then on track 352° to cross PITTT at 11000, then as depicted to RROYY, then on heading 344°. Expect RADAR vectors to final approach course.

#### LOST COMMUNICATIONS:

At RROYY, turn right direct OGD VORTAC and hold. Maintain 11000.

NOTE: Chart not to scale.

SW-4, 21 JUN 2018 to 19 JUL 2018

SW-4, 21 JUN 2018 to 19 JUL 2018

# DELTA FIVE ARRIVAL (RNAV)

(DELTA.DELTA5) 17AUG17

SALT LAKE CITY, UTAH  
SALT LAKE CITY INTL (SLC)