

LOC/DME I-MOY <b>109.5</b> Chan 32	APP CRS <b>164°</b>	Rwy Idg <b>12002</b> TDZE <b>4227</b> Apt Elev <b>4227</b>
--	------------------------	--

# ILS RWY 16L (CAT II & III)

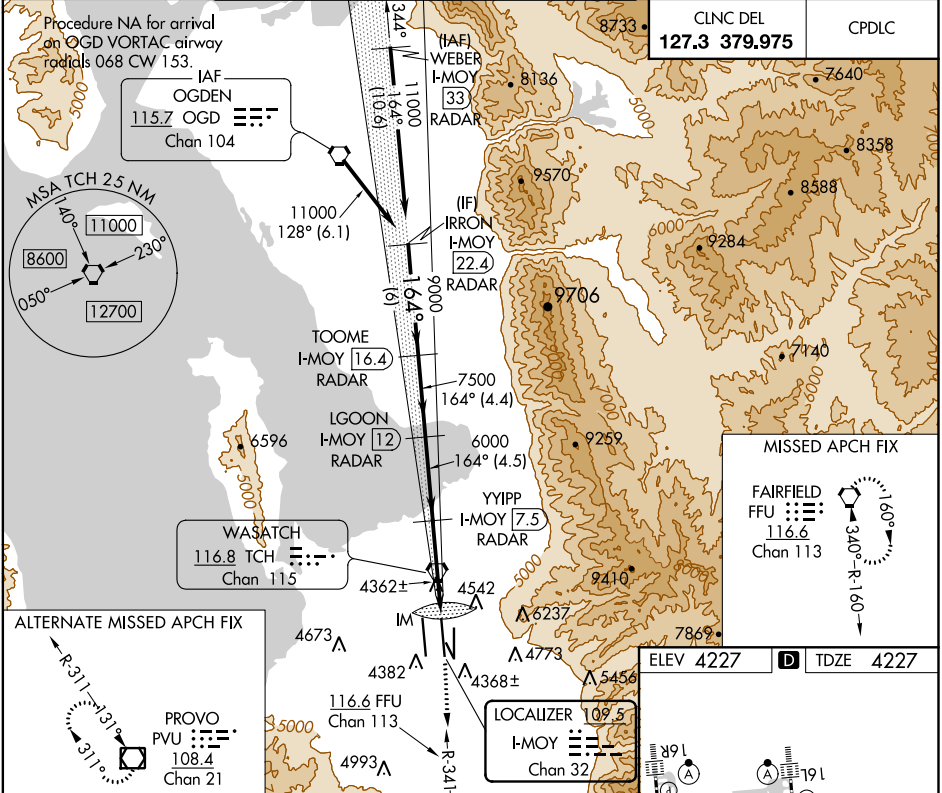
SALT LAKE CITY INTL (SLC)

Simultaneous approach authorized. DME or RADAR required.  
CAT II: RVR 1000 authorized with specific OPSPEC, MSPEC, or LOA approval and use of autoland or HUD to touchdown.

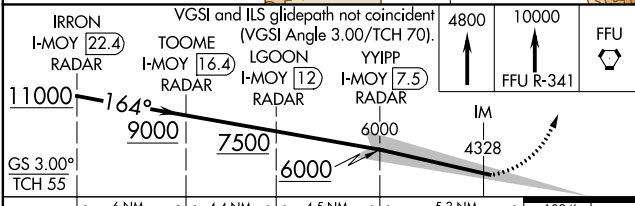
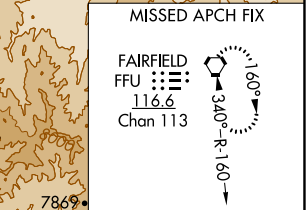
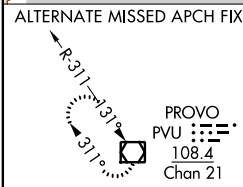
ALSF-2

MISSED APPROACH: Climb to 4800 then climb to 10000 via FFU VORTAC R-341 to FFU VORTAC and hold.

D-ATIS <b>124.75</b> <b>125.625</b>	SALT LAKE CITY APP CON <b>124.3 322.3</b>	SALT LAKE CITY TOWER <b>119.05 257.8 118.3 257.8</b> (Rwy 16L-34R) (Rwys 14-32, 17-35)	<b>132.65 336.4</b> (Rwy 16R-34L)	GND CON <b>121.9 348.6 123.775 348.6</b> (Rwys 14-32, 17-35) (Rwys 16L-34R, 16R-34L)
---	--	--	--------------------------------------	--

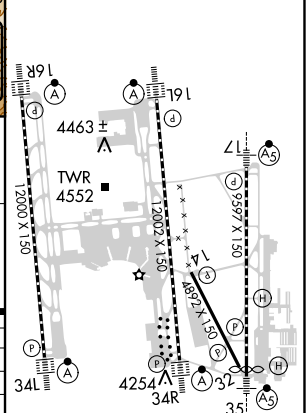


CLNC DEL <b>127.3 379.975</b>	CPDLC
----------------------------------	-------



ELEV 4227	TDZE 4227
-----------	-----------

IRRON I-MOY 22.4	TOOME I-MOY 16.4	LGOON I-MOY 12	YYIPP I-MOY 7.5	FFU
VGSi and ILS glidepath not coincident (VGSi Angle 3.00/TCH 70).				
6 NM	4.4 NM	4.5 NM	5.3 NM	1024'
CATEGORY	A	B	C	D
S-ILS 16L	CAT II RA 108/12 100 DA 4327			
S-ILS 16L	CAT IIIa RVR 07			
S-ILS 16L	CAT IIIb RVR 03			
S-ILS 16L	CAT IIIc NA			



HIRL all Rwys  
TDZ/CL Rwys 16L, 16R, 17, 34L, 34R and 35

## CATEGORY II & III ILS - SPECIAL AIRCREW & AIRCRAFT CERTIFICATION REQUIRED

SW-4, 21 JUN 2018 to 19 JUL 2018

SW-4, 21 JUN 2018 to 19 JUL 2018