

LOC/DME I-UAT <b>111.9</b> Chan <b>56</b>	APP CRS <b>164°</b>	Rwy ldg <b>12000</b> TDZE <b>4223</b> Apt Elev <b>4227</b>
---	------------------------	--

# ILS RWY 16R (SA CAT I)

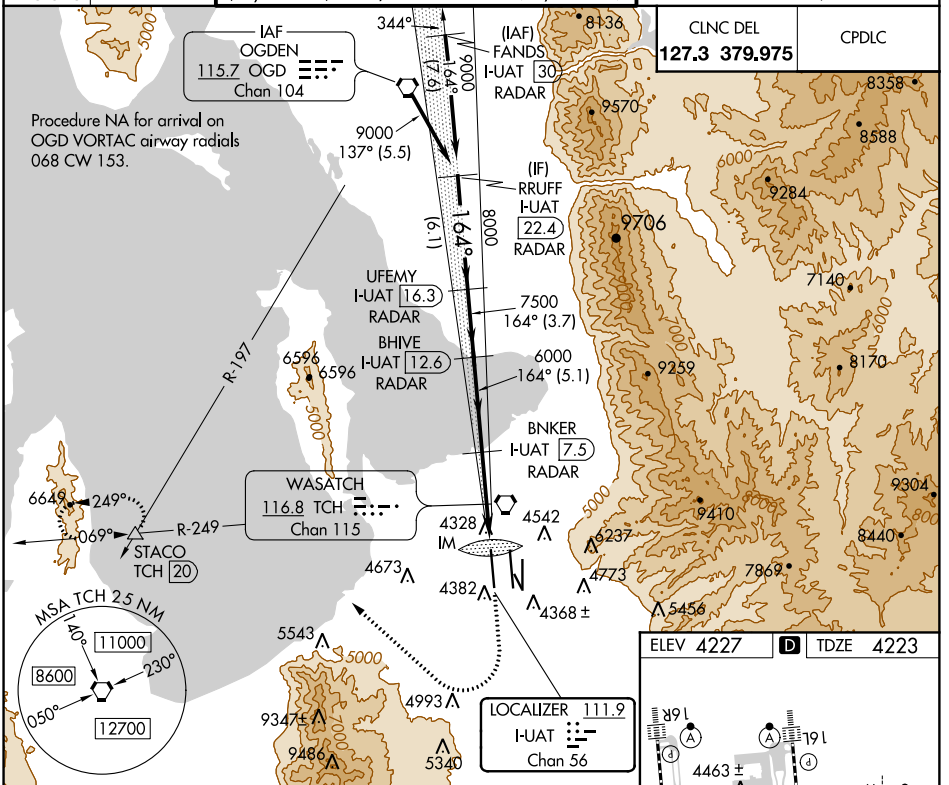
SALT LAKE CITY INTL (SLC)

Simultaneous approach authorized. DME or RADAR required. Requires specific OPSPEC, MSPEC, or LOA approval and use of HUD to DH.

ALSIF-2

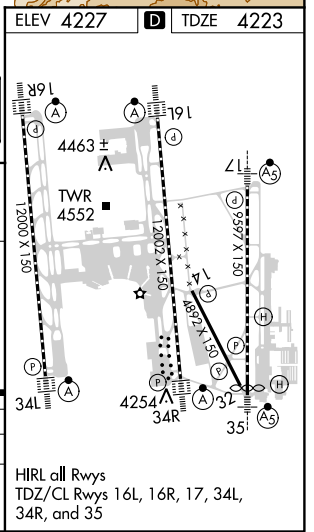
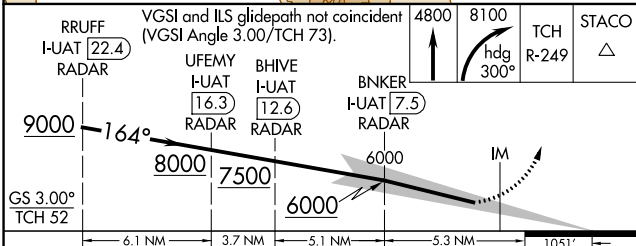
MISSED APPROACH: Climb to 4800 then climbing right turn to 8100 on heading 300° and on TCH VORTAC R-249 to STACO INT/TCH VORTAC 20 DME and hold.

D-ATIS <b>124.75</b> <b>125.625</b>	SALT LAKE CITY APP CON <b>124.3 322.3</b>	SALT LAKE CITY TOWER <b>119.05 257.8 118.3 257.8 132.65 336.4</b> (Rwy 16L-34R) (Rwys 14-32, 17-35) (Rwy 16R-34L)	GND CON <b>121.9 348.6 123.775 348.6</b> (Rwys 14-32, 17-35) (Rwys 16L-34R, 16R-34L)
---	--	---	--



SW-4, 21 JUN 2018 to 19 JUL 2018

SW-4, 21 JUN 2018 to 19 JUL 2018



CATEGORY	A	B	C	D
S-ILS 16R	RA 157/14 150 DA 4373			
<b>SA CATEGORY I ILS - SPECIAL AIRCREW &amp; AIRCRAFT CERTIFICATION REQUIRED</b>				