

LOC/DME I-UUH 111.9 Chan 56	APP CRS 344°	Rwy Idg TDZE 12000 4226	Apt Elev 4227
--	------------------------	---	-------------------------

ILS RWY 34L (CAT II & III)

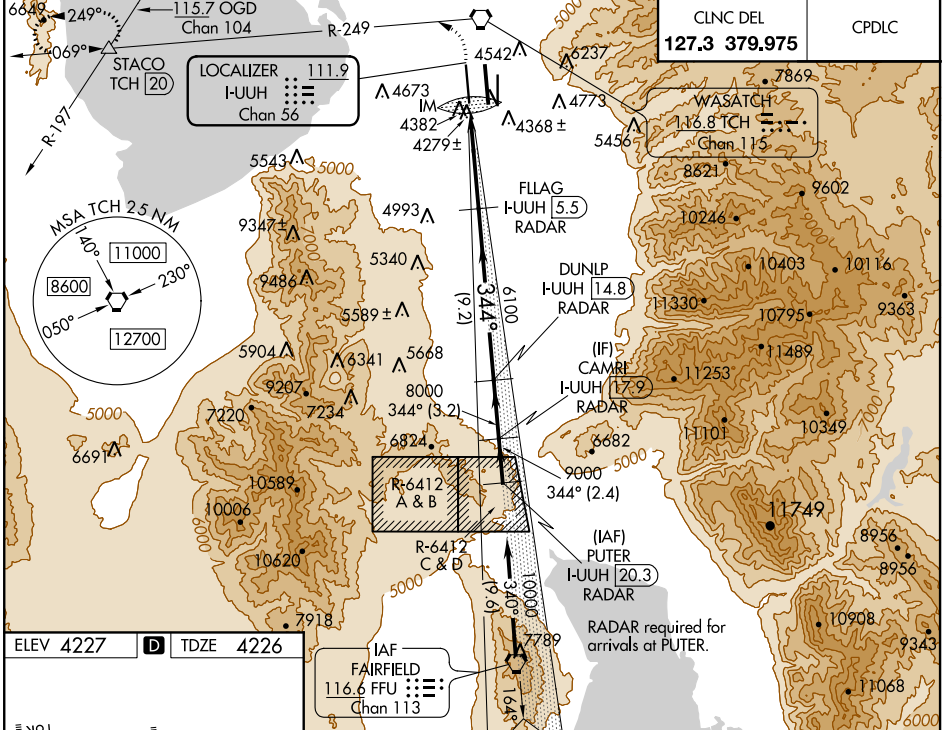
SALT LAKE CITY INTL (SLC)

Simultaneous approach authorized. DME or RADAR required.
 CAT II: RVR 1000 authorized with specific OPSPEC, MSPEC or LOA approval and use of autoland or HUD to touchdown.

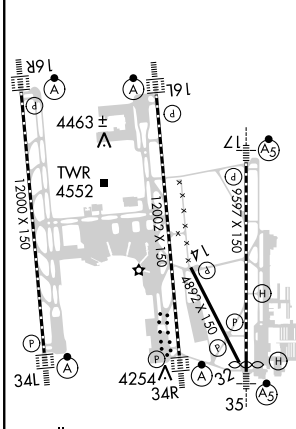
ALSF-2

MISSED APPROACH: Climb to 4800 then climbing left turn to 8100 on TCH VORTAC R-249 to STACO INT/TCH 20 DME and hold.

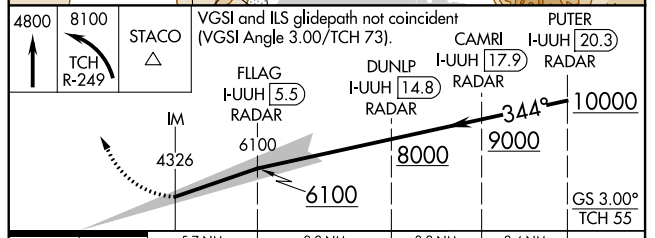
D-ATIS 124.75 125.625	SALT LAKE CITY APP CON 124.3 322.3	SALT LAKE CITY TOWER 119.05 257.8 (Rwy 16L-34R) 118.3 257.8 (Rwys 14-32, 17-35) 132.65 336.4 (Rwy 16R-34L)			GND CON 121.9 348.6 (Rwys 14-32, 17-35) 123.775 348.6 (Rwys 16L-34R, 16R-34L)
---	--	--	--	--	--



ELEV 4227	D	TDZE 4226
-----------	----------	-----------



HIRL all Rwys
 TDZ/CL Rwys 16L, 16R, 17, 35, 34L, and 34R



CATEGORY	A	B	C	D
S-ILS 34L	CAT II RA 102/12 100 DA 4326			
S-ILS 34L	CAT IIIa RVR 07			
S-ILS 34L	CAT IIIb RVR 03			
S-ILS 34L	CAT IIIc NA			

CATEGORY II & III ILS - SPECIAL AIRCREW & AIRCRAFT CERTIFICATION REQUIRED

SW-4, 21 JUN 2018 to 19 JUL 2018

SW-4, 21 JUN 2018 to 19 JUL 2018