

LOC/DME I-UUJH 111.9 Chan 56	APP CRS 344°	Rwy Idg TDZE 12000 4226	Apt Elev 4227
-------------------------------------------	------------------------	---------------------------------------------	-------------------------

ILS RWY 34L (SA CAT I)

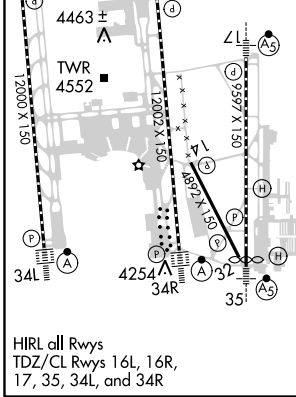
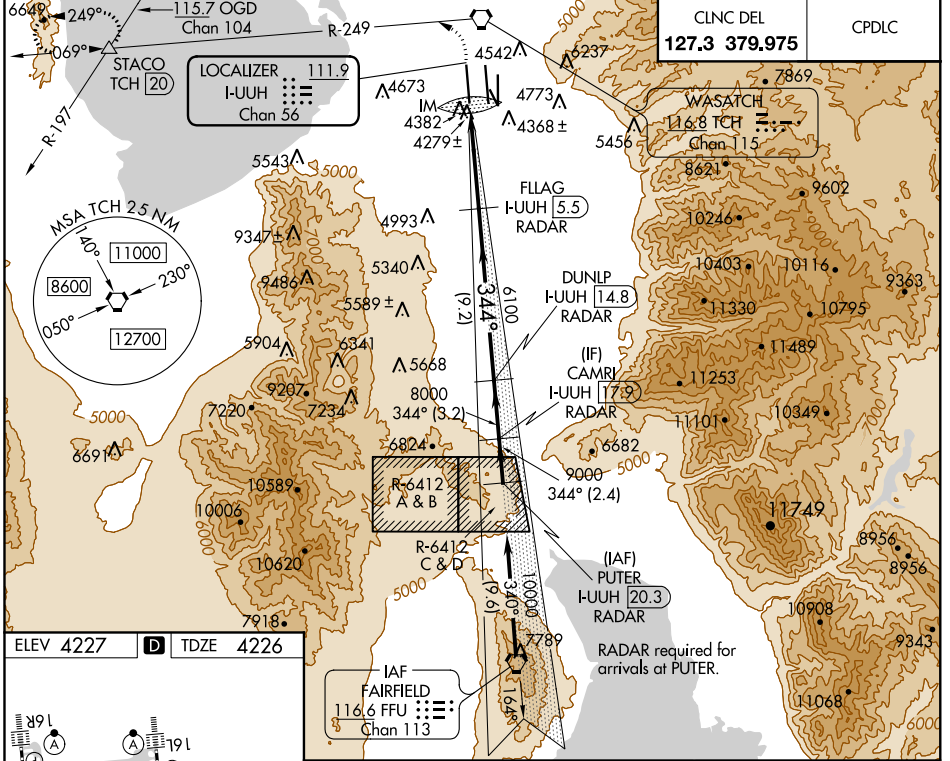
SALT LAKE CITY INTL (SLC)

Simultaneous approach authorized. DME or RADAR required. Requires specific OPSPEC, MSPEC, or LOA approval and use of HUD to DH.

ALSIF-2

MISSED APPROACH: Climb to 4800 then climbing left turn to 8100 on TCH VORTAC R-249 to STACO INT/TCH 20 DME and hold.

D-ATIS 124.75 125.625	SALT LAKE CITY APP CON 124.3 322.3	SALT LAKE CITY TOWER 119.05 257.8 (Rwy 16L-34R) 118.3 257.8 (Rwys 14-32, 17-35) 132.65 336.4 (Rwy 16R-34L)			GND CON 121.9 348.6 (Rwys 14-32, 17-35) 123.775 348.6 (Rwys 16L-34R, 16R-34L)
-------------------------------------------	----------------------------------------------	------------------------------------------------------------------------------------------------------------------------------------	--	--	------------------------------------------------------------------------------------------------



4800	8100	STACO TCH R-249	VGSI and ILS glidepath not coincident (VGSI Angle 3.00/TCH 73).	PUTER CAMRI I-UUJH 20.3 RADAR
6100	8000	FLAG I-UUJH 5.5 RADAR		DUNLP I-UUJH 14.8 RADAR
9000	10000			I-UUJH 17.9 RADAR
GS 3.00° TCH 55				

CATEGORY	A	B	C	D
S-ILS 34L	RA 158/14 150 DA 4376			

SA CATEGORY I ILS - SPECIAL AIRCREW & AIRCRAFT CERTIFICATION REQUIRED

SW-4, 21 JUN 2018 to 19 JUL 2018

SW-4, 21 JUN 2018 to 19 JUL 2018