

LOC/DME I-SLC <b>109.5</b> Chan <b>32</b>	APP CRS <b>344°</b>	Rwy Idg TDZE Apt Elev	<b>12002</b> <b>4222</b> <b>4227</b>
---	------------------------	-----------------------------	--

# ILS RWY 34R (CAT II & III)

SALT LAKE CITY INTL (SLC)

DME or RADAR Required.

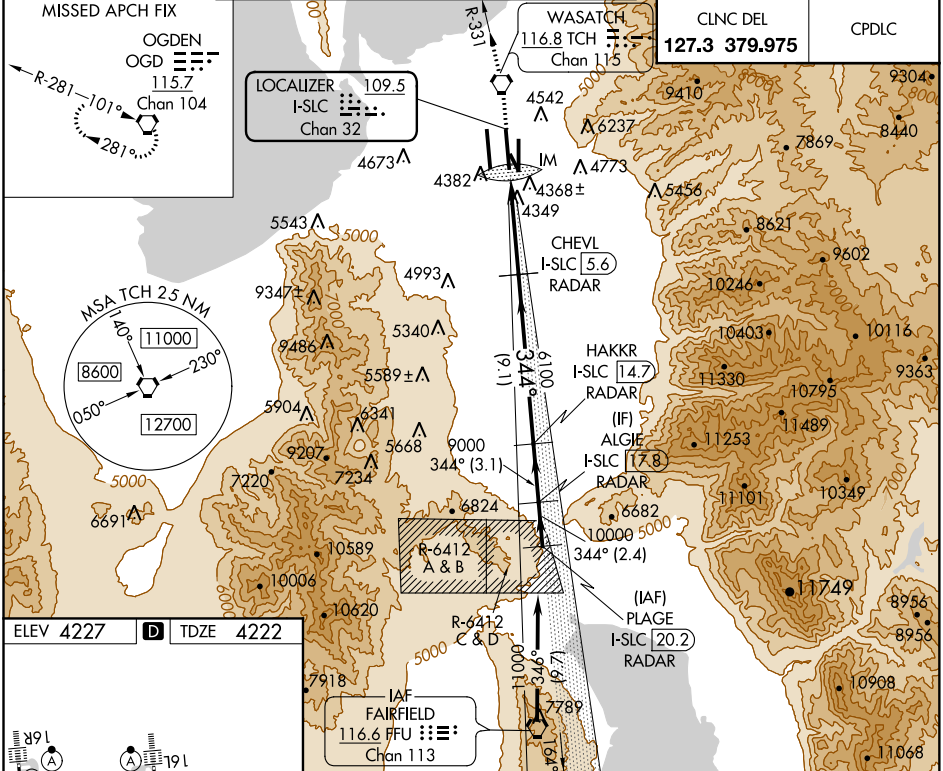
Simultaneous approach authorized.  
 CAT II: RVR 1000 authorized with specific OPSPEC, MSPEC,  
 or LOA approval and use of autoland or HUD to touchdown.

ALSF-2

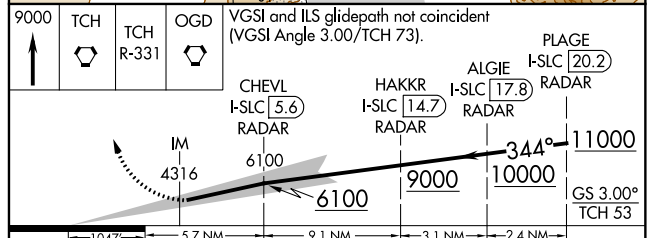
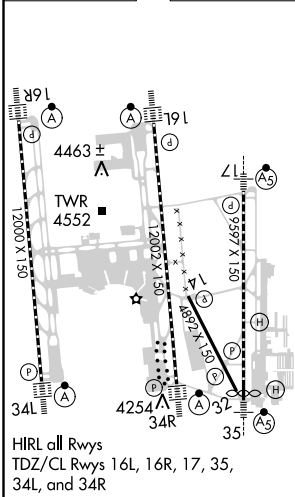


MISSED APPROACH: Climb to 9000  
 direct TCH VORTAC then on TCH VORTAC  
 R-331 to OGD VORTAC and hold.

D-ATIS <b>124.75</b> <b>125.625</b>	SALT LAKE CITY APP CON <b>124.3 322.3</b>	SALT LAKE CITY TOWER <b>119.05 257.8 118.3 257.8 132.65 336.4</b> (Rwy 16L-34R) (Rwys 14-32, 17-35) (Rwy 16R-34L)			GND CON <b>121.9 348.6 123.775 348.6</b> (Rwys 14-32, 17-35) (Rwys 16L-34R, 16R-34L)	
---	---	---	--	--	--	--



ELEV 4227	<b>D</b>	TDZE 4222
-----------	----------	-----------



CATEGORY	A	B	C	D
S-ILS 34R	CAT II RA 100/12 100 DA 4322			
S-ILS 34R	CAT III RVR 03			

**CATEGORY II & III ILS - SPECIAL AIRCREW & AIRCRAFT CERTIFICATION REQUIRED**