

LOC/DME I-SLC 109.5 Chan 32	APP CRS 344°	Rwy Idg 12002 TDZE 4222 Apt Elev 4227
--	------------------------	--

ILS RWY 34R (SA CAT I)

SALT LAKE CITY INTL (SLC)

DME or RADAR Required.

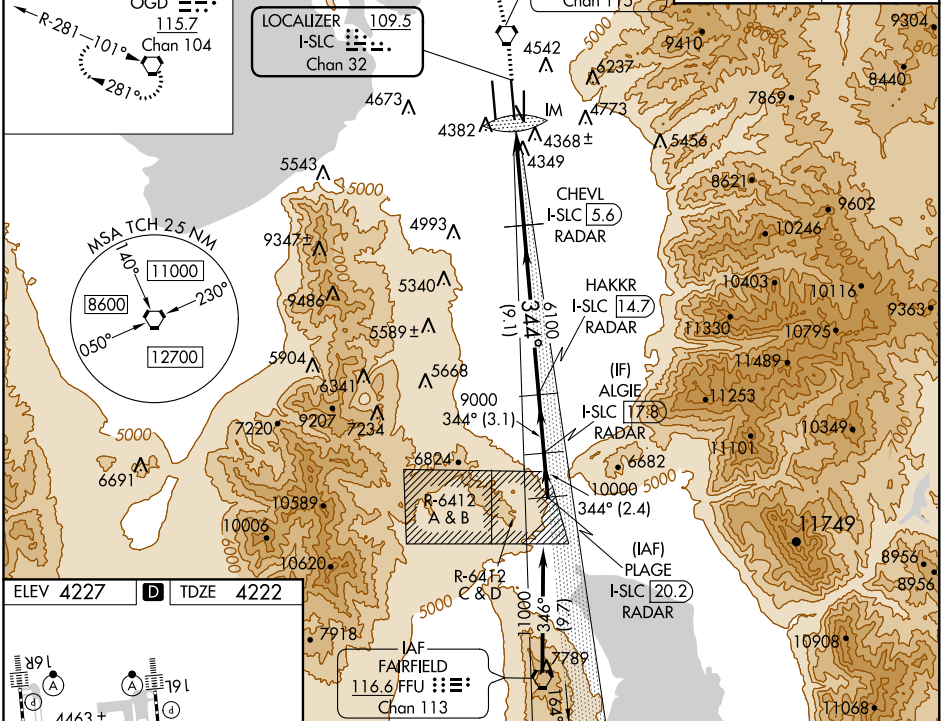


MISSED APPROACH: Climb to 9000 direct TCH VORTAC then on TCH VORTAC R-331 to OGD VORTAC and hold.

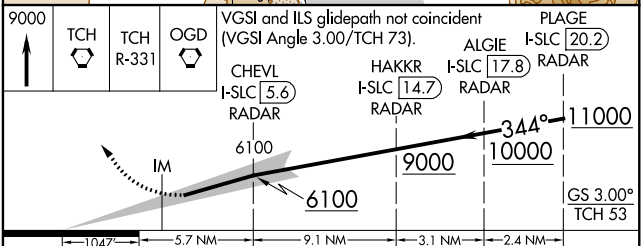
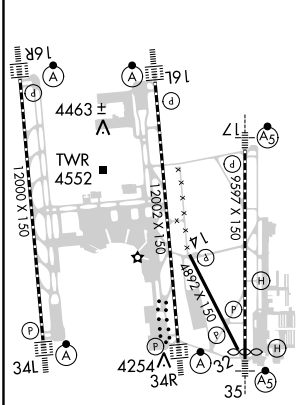
Simultaneous approach authorized.
Requires specific OPSPEC, MSPEC, or LOA approval and use of HUD to DH.

D-ATIS 124.75 125.625	SALT LAKE CITY APP CON 124.3 322.3	SALT LAKE CITY TOWER 119.05 257.8 118.3 257.8 132.65 336.4 (Rwy 16L-34R) (Rwys 14-32, 17-35) (Rwy 16R-34L)			GND CON 121.9 348.6 123.775 348.6 (Rwys 14-32, 17-35) (Rwys 16L-34R, 16R-34L)	
---	--	---	--	--	--	--

MISSD APCH FIX	OGDEN OGD 115.7 Chan 104	LOCALIZER I-SLC 109.5 Chan 32	WASATCH 116.8 TCH Chan 115	CINC DEL 127.3 379.975	CPDLC
----------------	--------------------------------	-------------------------------------	----------------------------------	----------------------------------	-------



ELEV 4227	D	TDZE 4222
-----------	---	-----------



CATEGORY	A	B	C	D
S-ILS 34R	RA 151/14 150 DA 4372			

SA CATEGORY I ILS - SPECIAL AIRCREW & AIRCRAFT CERTIFICATION REQUIRED

SALT LAKE CITY, UTAH
Amdt 4C 24MAY18

40°47'N-111°59'W

SALT LAKE CITY INTL (SLC)
ILS RWY 34R (SA CAT I)

SW-4, 21 JUN 2018 to 19 JUL 2018

SW-4, 21 JUN 2018 to 19 JUL 2018