

LOC/DME I-MOY 109.5 Chan 32	APP CRS 164°	Rwy Idg TDZE Apt Elev	12002 4227 4227
---	------------------------	-----------------------------	--

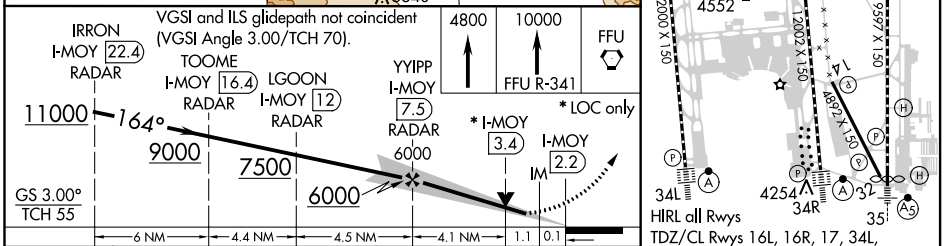
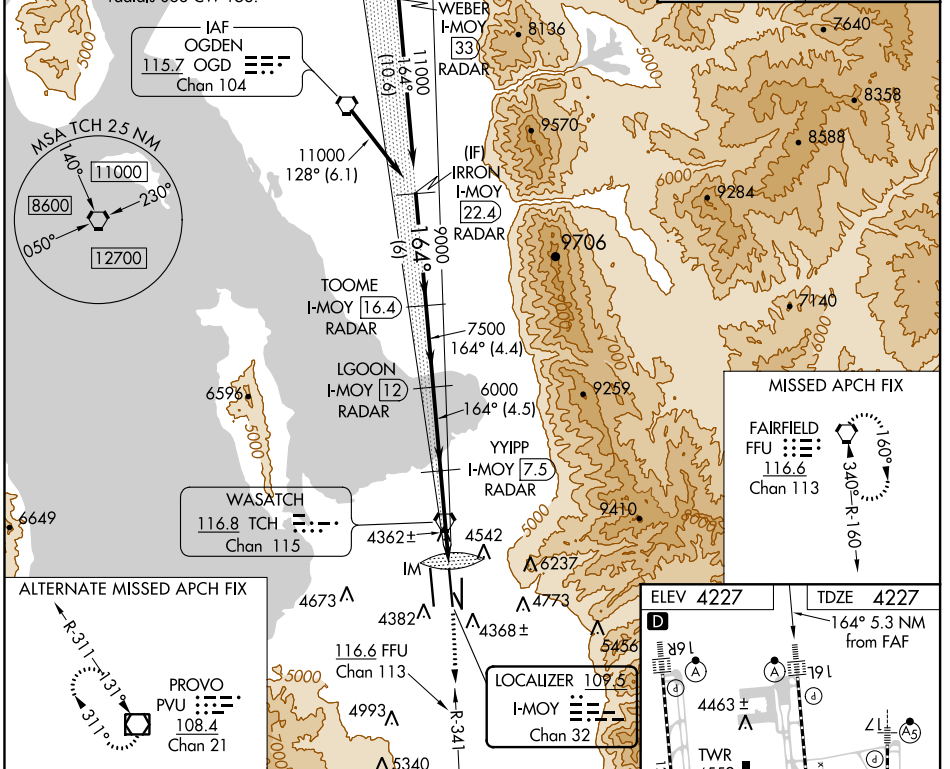
ILS or LOC RWY 16L

SALT LAKE CITY INTL (SLC)

Simultaneous approach authorized. DME or RADAR required.	ALSF-2	MISSED APPROACH: Climb to 4800 then climb to 10000 via FFU VORTAC R-341 to FFU VORTAC and hold.

D-ATIS 124.75 125.625	SALT LAKE CITY APP CON 124.3 322.3	SALT LAKE CITY TOWER 119.05 257.8 (Rwys 16L-34R)	118.3 257.8 (Rwys 14-32, 17-35)	132.65 336.4 (Rwy 16R-34L)	GND CON 121.9 348.6 (Rwys 14-32, 17-35)	123.775 348.6 (Rwys 16L-34R, 16R-34L)
---	--	---	---	--------------------------------------	--	---

Procedure NA for arrival on OGD VORTAC airway radials 068 CW 153.	CLNC DEL 127.3 379.975	CPDLC
---	----------------------------------	-------



CATEGORY	A	B	C	D
S-ILS 16L		4427/18	200 (200-½)	
S-LOC 16L	4680/24	453 (500-½)	4680/40 453 (500-¾)	4680/50 453 (500-1)

FAF to MAP 5.3 NM					
Knots	60	90	120	150	180
Min:Sec	5:18	3:32	2:39	2:07	1:46

SW-4, 21 JUN 2018 to 19 JUL 2018

SW-4, 21 JUN 2018 to 19 JUL 2018