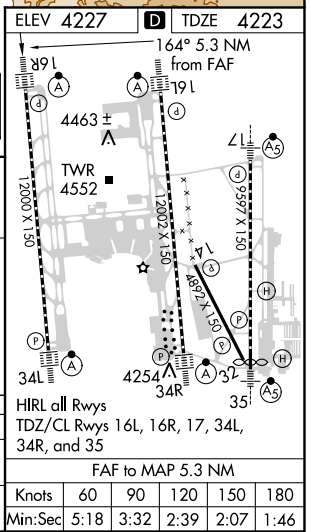
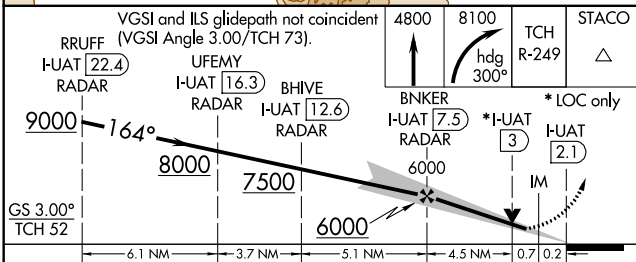
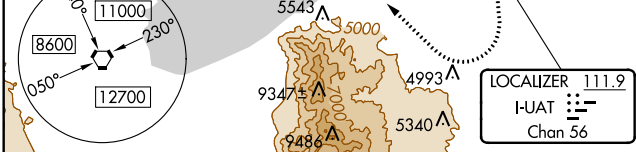
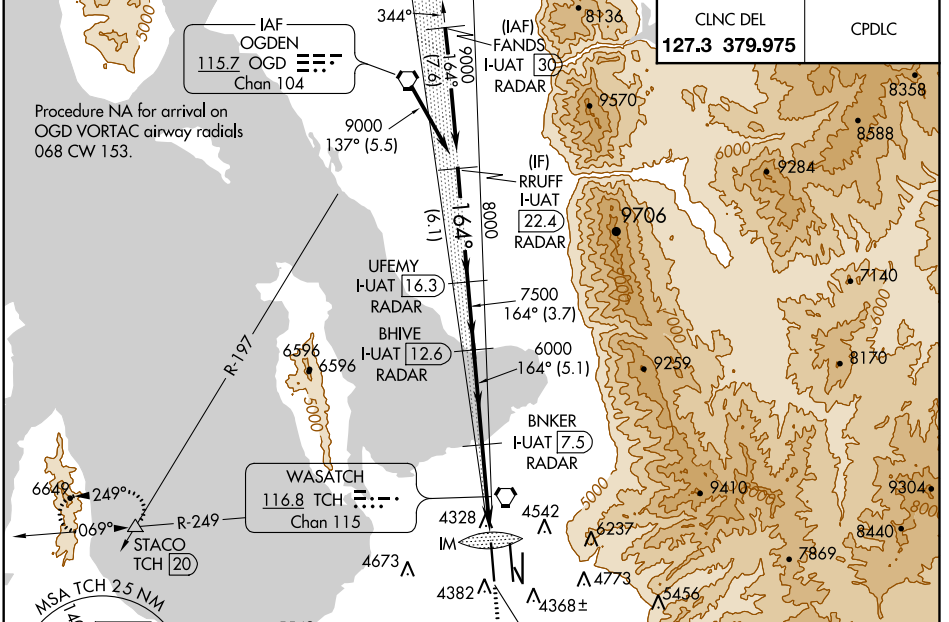


LOC/DME I-UAT 111.9 Chan 56	APP CRS 164°	Rwy ldg 12000 TDZE 4223 Apt Elev 4227
---	------------------------	--

ILS or LOC RWY 16R

SALT LAKE CITY INTL (SLC)

<p>Simultaneous approach authorized. DME or RADAR required.</p>	<p>ALSf-2 A</p>	<p>MISSED APPROACH: Climb to 4800 then climbing right turn to 8100 on heading 300° and on TCH VORTAC R-249 to STACO INT/TCH VORTAC 20 DME and hold.</p>				
			<p>D-ATIS 124.75 125.625</p>	<p>SALT LAKE CITY APP CON 124.3 322.3</p>	<p>SALT LAKE CITY TOWER 119.05 257.8 (Rwy 16L-34R)</p>	<p>118.3 257.8 (Rwys 14-32, 17-35)</p>



CATEGORY	A	B	C	D
S-ILS 16R	4423/18 200 (200-½)			
S-LOC 16R	4580/24 357 (400-½)		4580/40 357 (400-¾)	

SW-4, 21 JUN 2018 to 19 JUL 2018

SW-4, 21 JUN 2018 to 19 JUL 2018