

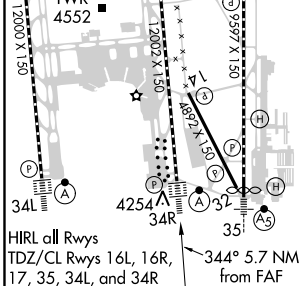
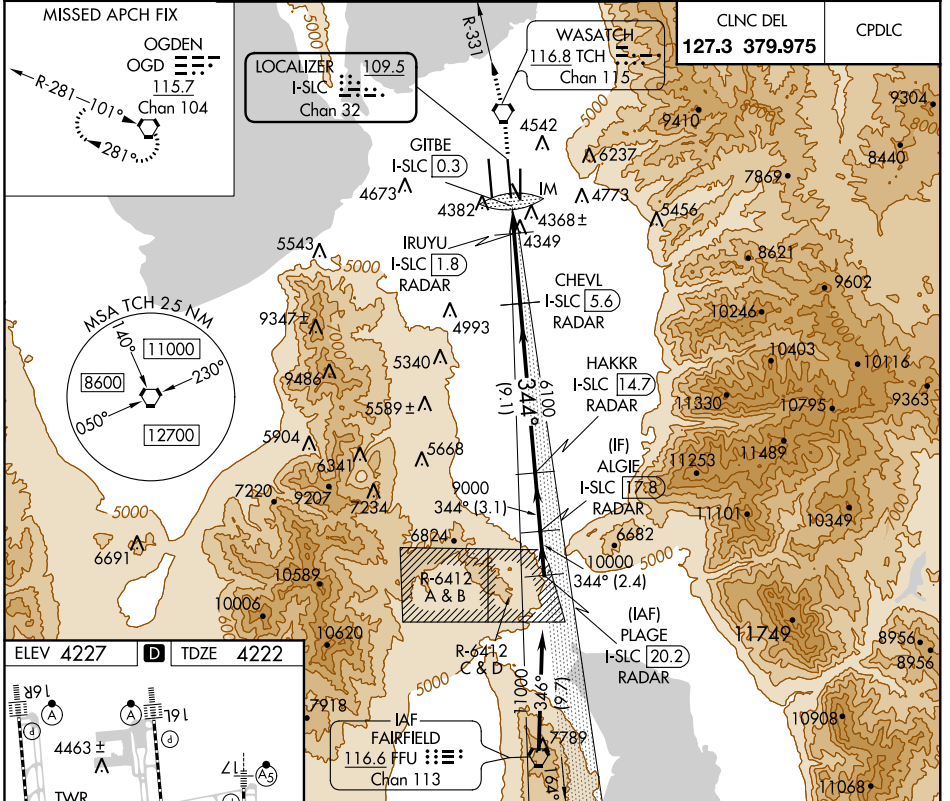
LOC/DME I-SLC 109.5 Chan 32	APP CRS 344°	Rwy Idg 12002 TDZE 4222 Apt Elev 4227
------------------------------------------	------------------------	------------------------------------------------------------------

ILS or LOC RWY 34R

SALT LAKE CITY INTL (SLC)

DME or RADAR Required.		ALSIF-2	MISSED APPROACH: Climb to 9000 direct TCH VORTAC then on TCH VORTAC R-331 to OGD VORTAC and hold.
Simultaneous approach authorized.			

D-ATIS 124.75 125.625	SALT LAKE CITY APP CON 124.3 322.3	SALT LAKE CITY TOWER 119.05 257.8 (Rwy 16L-34R)	118.3 257.8 (Rwys 14-32, 17-35)	132.65 336.4 (Rwy 16R-34L)	GND CON 121.9 348.6 (Rwys 14-32, 17-35)	123.775 348.6 (Rwys 16L-34R, 16R-34L)
-------------------------------------------	-------------------------------------------------	--------------------------------------------------------------	-------------------------------------------	--------------------------------------	------------------------------------------------------	-------------------------------------------------



ELEV 4227	D	TDZE 4222		
<p>9000 TCH TCH OGD</p> <p>↑ R-331 </p> <p>VGSI and ILS glidepath not coincident (VGSI Angle 3.00/TCH 73).</p> <p>PLAGE ALGIE I-SLC [20.2] RADAR</p> <p>*LOC only I-SLC DME ANT. *I-SLC I-SLC I-SLC</p> <p>GITBE I-SLC [0.3] IRUYU I-SLC [1.1] CHEVL I-SLC [5.6] HAKKR I-SLC [14.7] RADAR</p> <p>344° 11000</p> <p>4900* 6100 9000 10000</p> <p>GS 3.00° TCH 53</p>				
CATEGORY	A	B	C	D
S-ILS 34R	4422/18 200 (200-½)			
S-LOC 34R	4700/24 478 (500-½)			

FAF to MAP 5.3 nm					
Knots	60	90	120	150	180
Min:Sec	5:18	3:32	2:39	2:07	1:46

SW-4, 21 JUN 2018 to 19 JUL 2018

SW-4, 21 JUN 2018 to 19 JUL 2018