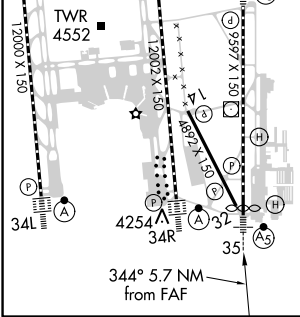
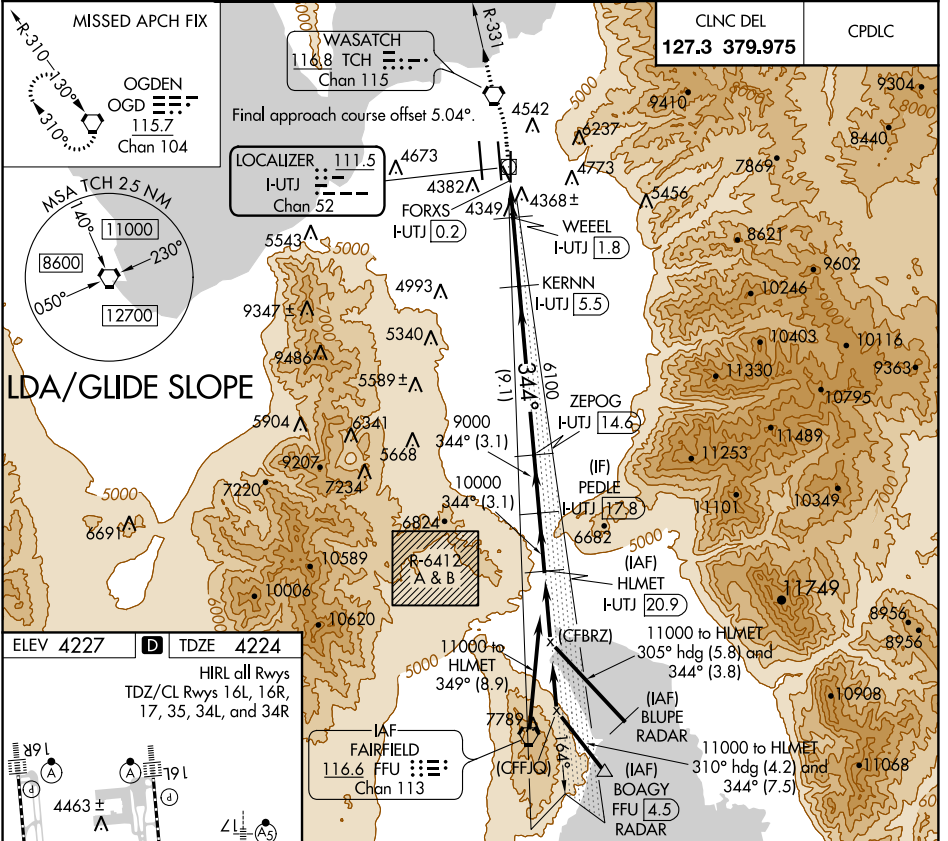


LOC/DME I-UTJ 111.5 Chan 52	APP CRS 344°	Rwy Idg TDZE Apt Elev	9273 4224 4227
--	------------------------	-----------------------------	---

LDA RWY 35

SALT LAKE CITY INTL (SLC)

▽ Simultaneous approach authorized. DME required. For ins AP, increase S-LDA/GS 35 Cat E visibility to RVR 4000, increase S-LDA 35 Cat E visibility to 1 1/4 SM.	MALSR 	MISSED APPROACH: Climb to 4800 then climbing left turn to 9000 direct TCH VORTAC and on TCH VORTAC R-331 to OGD VORTAC and hold.	
			D-ATIS 124.75 125.625



ELEV 4227	D	TDZE 4224	HIRL all Rwys TDZ/CL Rwys 16L, 16R, 17, 35, 34L, and 34R							
*LDA only I-UTJ DME ANT. FORXS I-UTJ (0.2) *I-UTJ (0.9)			WEEL I-UTJ (1.8)		KERNN I-UTJ (5.5)		ZEPOG I-UTJ (14.6)		HLMET I-UTJ (20.9)	
4800 9000 TCH TCH R-331 OGD			6100 9000 4900*		6100 9000 10000 11000		9000 10000 11000 11000		11000 10000 9000 11000	
CATEGORY S-LDA/GS 35 S-LDA 35			A 4660/24 436 (500-1/2)		B 4474/24 250 (300-1/2)		C 4660/40 436 (500-3/4)		D 4660/40 436 (500-3/4)	

SW-4, 21 JUN 2018 to 19 JUL 2018

SW-4, 21 JUN 2018 to 19 JUL 2018