

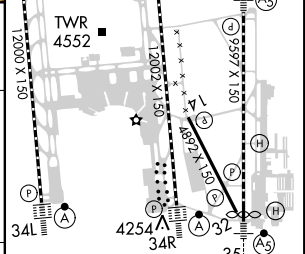
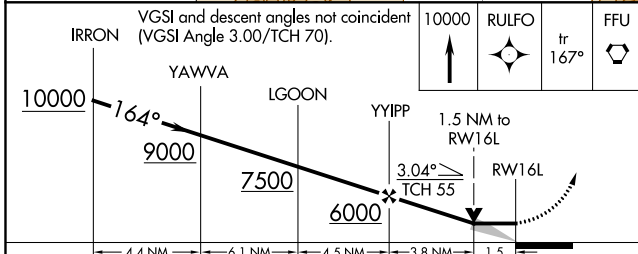
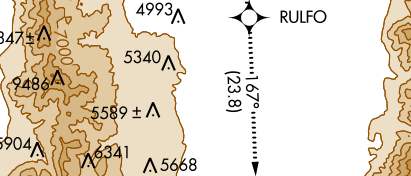
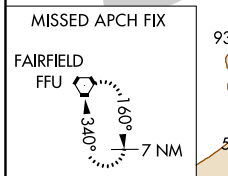
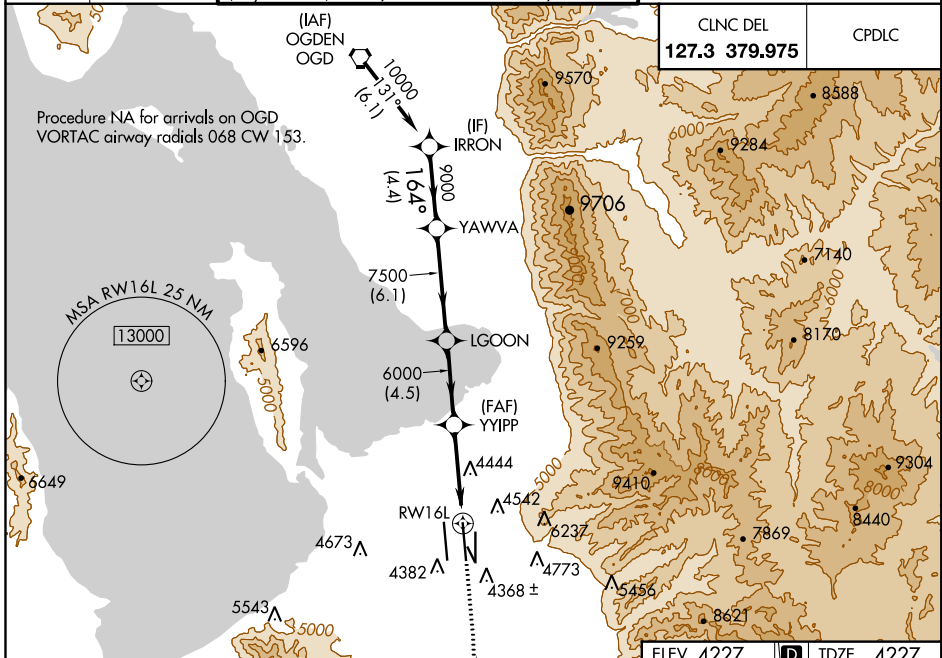
APP CRS	Rwy Idg	12002
164°	TDZE	4227
	Apt Elev	4227

RNAV (GPS) RWY 16L

SALT LAKE CITY INTL (SLC)

	DME/DME RNP- 0.3 NA. For inop ALS, increase LNAV Cat E visibility to 2 SM.	MISSED APPROACH: Climb to 10000 direct RULFO and on track 167° to FFU VORTAC and hold.
	ALSF-2	

D-ATIS 124.75	SALT LAKE CITY APP CON 124.3 322.3	SALT LAKE CITY TOWER 119.05 257.8 (Rwy 16L-34R)	118.3 257.8 (Rwys 14-32, 17-35)	132.65 336.4 (Rwy 16R-34L)	GND CON 121.9 348.6 (Rwys 14-32, 17-35)	123.775 348.6 (Rwys 16L-34R, 16R-34L)
-------------------------	-------------------------------------------------	--------------------------------------------------------------	-------------------------------------------	--------------------------------------	------------------------------------------------------	-------------------------------------------------



CATEGORY	A	B	C	D	E
LNAV MDA	4760/24	533 (600-½)	4760/50 533 (600-1)	4760/60 533 (600-1½)	4760-1½ 533 (600-1½)

HIRL all Rwys
 TDZ/CL Rwys 16L, 16R, 17, 35,
 34L, and 34R

SW-4, 21 JUN 2018 to 19 JUL 2018

SW-4, 21 JUN 2018 to 19 JUL 2018