

WAAS CH 82338 W17A	APP CRS 169°	Rwy Idg TDZE Apt Elev	9597 4219 4227
--	------------------------	-----------------------------	---

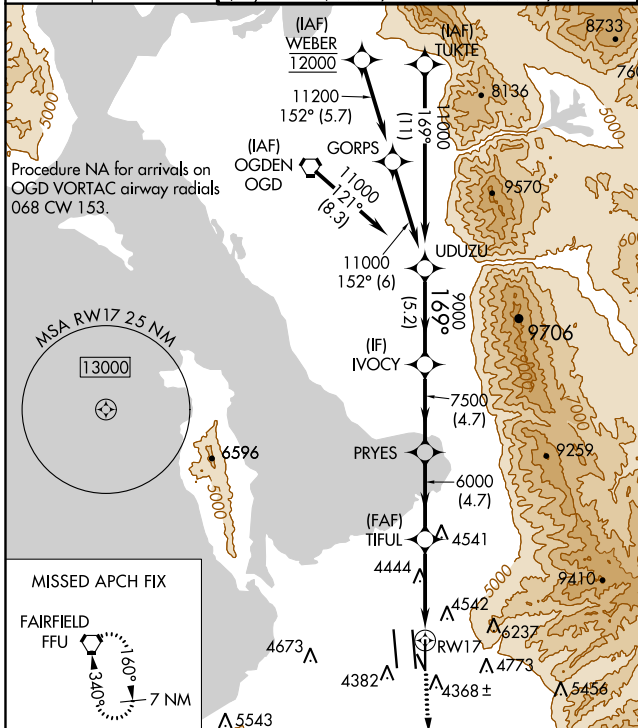
RNAV (GPS) RWY 17

SALT LAKE CITY INTL (SLC)

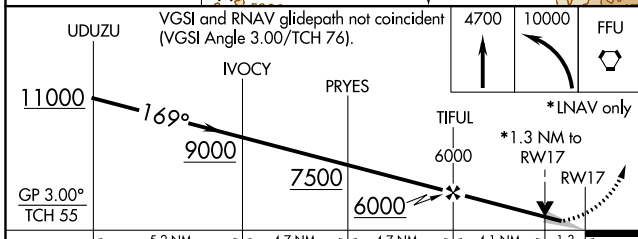
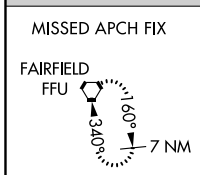
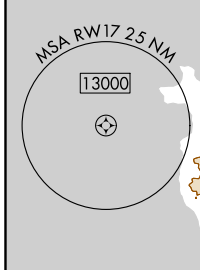
▼ For uncompensated Baro-VNAV systems, LNAV/VNAV NA below -14°C (7°F) or above 49°C (121°F). DME/DME RNP-0.3 NA. For inop ALS, increase LPV Cat E visibility to RVR 4000, LNAV/VNAV Cat E visibility to RVR 6000, and LNAV Cat C/D/E visibility to 1½ SM. Simultaneous approach authorized. LNAV procedure NA during simultaneous operations. Use of FD or AP providing RNAV track guidance required during simultaneous operations.

MALSRL
MISSED APPROACH:
Climb to 4700 then climbing left turn to 10000 direct FFU VORTAC and hold.

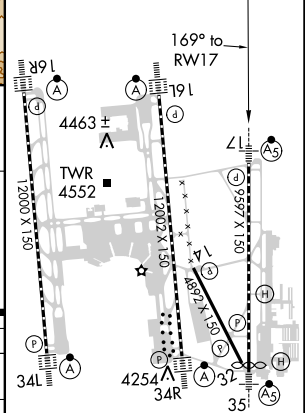
D-ATIS 124.75 125.625	SALT LAKE CITY APP CON 124.3 322.3	SALT LAKE CITY TOWER 119.05 257.8 118.3 257.8 132.65 336.4 (Rwy 16L-34R) (Rwys 14-32, 17-35) (Rwy 16R-34L)			GND CON 121.9 348.6 123.775 348.6 (Rwys 14-32, 17-35) (Rwys 16L-34R, 16R-34L)
---	---	---	--	--	--



CLNC DEL 127.3 379.975	CPDLC
----------------------------------	-------



ELEV 4227	TDZE 4219
-----------	-----------



CATEGORY	A	B	C	D	E
LPV DA	4419/18		200 (200-½)		
LNAV/VNAV DA	4571/30		352 (400-¾)		
LNAV MDA	4700/24 481 (500-½)		4700/50 481 (500-1)		

HIRL all Rwys
TDZ/CL Rwys 16L, 16R, 17, 35, 34L, and 34R

SW-4, 21 JUN 2018 to 19 JUL 2018

SW-4, 21 JUN 2018 to 19 JUL 2018