

WAAS CH 70432 W34B	APP CRS 344°	Rwy Idg TDZE Apt Elev	12000 4226 4227
--	------------------------	-----------------------------	--

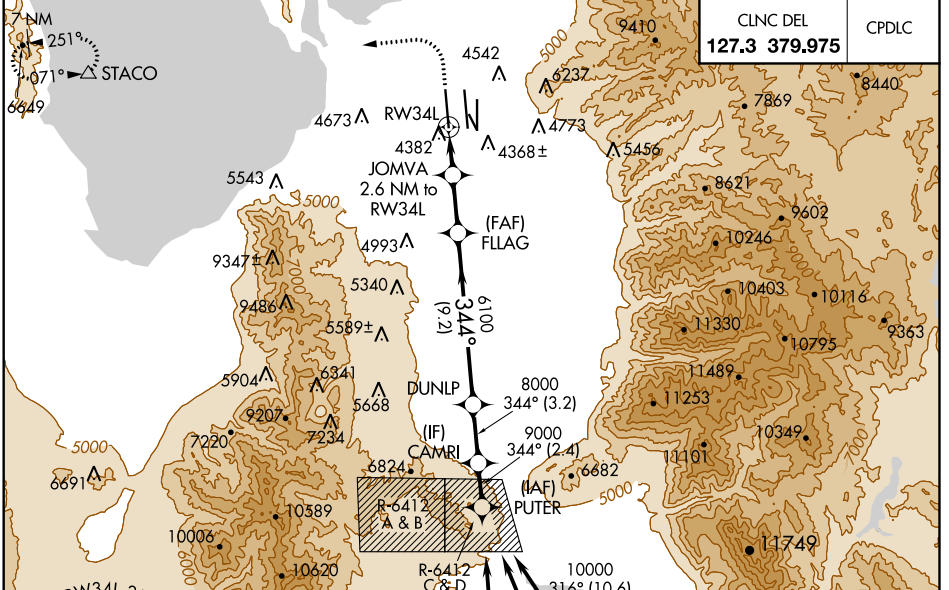
RNAV (GPS) RWY 34L

SALT LAKE CITY INTL (SLC)

For uncompensated Baro-VNAV systems, LNAV/VNAV NA below -17°C (2°F) or above 49°C (121°F). Simultaneous approach authorized. DME/DME RNP-0.3 NA. Use of FD or AP providing RNAV track guidance required during simultaneous operations. LNAV procedure NA during simultaneous operations. For inop ALS, increase LPV Cat E visibility to RVR 4000, LNAV/VNAV Cat E visibility to RVR 6000, LNAV Cat E visibility to 1/4 SM.

ALS-F-2
MISSED APPROACH: Climb to 4800 then climbing left turn to 8100 direct STACO and hold.

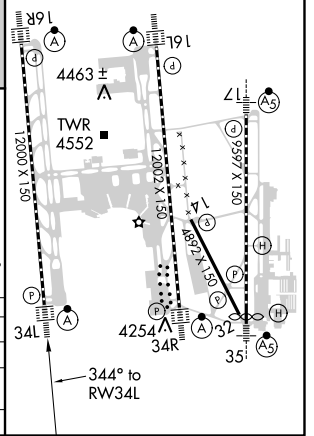
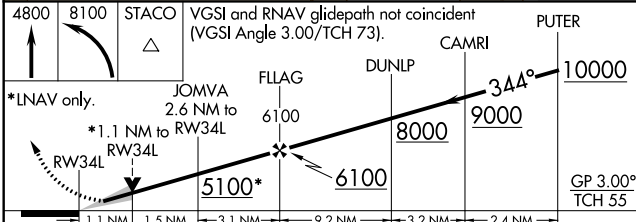
D-ATIS 124.75 125.625	SALT LAKE CITY APP CON 124.3 322.3	SALT LAKE CITY TOWER 119.05 257.8 118.3 257.8 132.65 336.4 (Rwy 16L-34R) (Rwys 14-32, 17-35) (Rwy 16R-34L)			GND CON 121.9 348.6 123.775 348.6 (Rwys 14-32, 17-35) (Rwys 16L-34R, 16R-34L)	
---	--	---	--	--	--	--



CLNC DEL 127.3 379.975	CPDLC
----------------------------------	-------



ELEV 4227	TDZE 4226
HIRL oil Rwys TDZ/CL Rwys 16L, 16R, 17, 35, 34L, and 34R	



CATEGORY	A	B	C	D	E
LPV DA		4426/18	200 (200-1/2)		
LNAV/VNAV DA		4577/30	351 (400-3/4)		
LNAV MDA	4660/24	434 (500-1/2)	4660/40	434 (500-3/4)	

SW-4, 21 JUN 2018 to 19 JUL 2018

SW-4, 21 JUN 2018 to 19 JUL 2018