

WAAS CH 49230 W34A	APP CRS 344°	Rwy ldg TDZE Apt Elev	12002 4222 4227
--	------------------------	-----------------------------	--

RNAV (GPS) RWY 34R

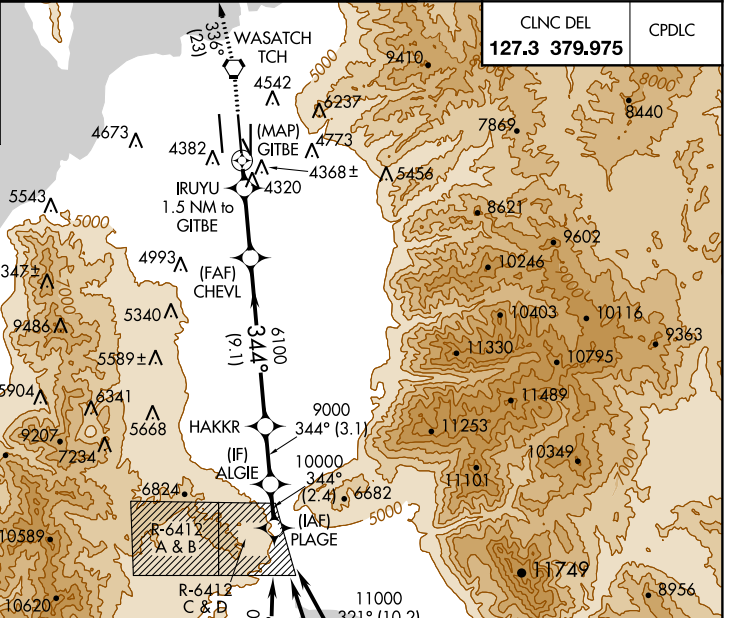
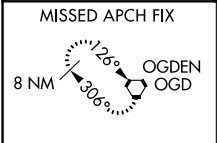
SALT LAKE CITY INTL (SLC)

NA Simultaneous approach authorized. DME/DME RNP-0.3 NA. Use of FD or AP providing RNAV track guidance required during simultaneous operations. LNAV procedure NA during simultaneous operations. For uncompensated Baro-VNAV systems, LNAV/VNAV NA below -17°C (1°F) or above 49°C (121°F). For inop ALS, increase LPV Cat E visibility to 3/4, LNAV/VNAV Cat E visibility to 1 3/4 and LNAV Cats C/D/E to 1 3/8 SM.

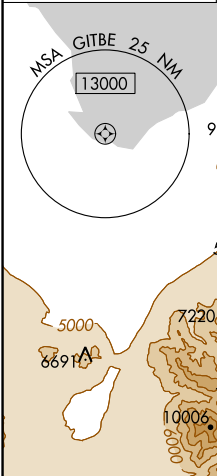
ALSF-2
A

MISSED APPROACH: Climb to 9000 direct TCH VORTAC and on track 336° to OGD VORTAC and hold.

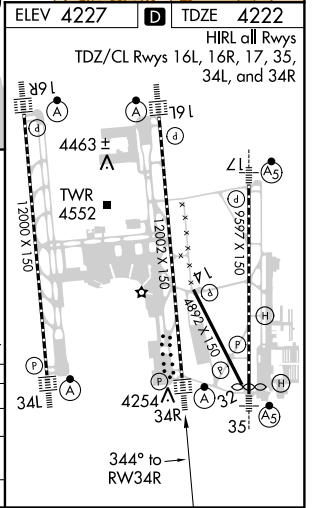
D-ATIS 124.75	SALT LAKE CITY APP CON 124.3 322.3	SALT LAKE CITY TOWER 119.05 257.8 118.3 257.8 132.65 336.4 (Rwy 16L-34R) (Rwys 14-32, 17-35) (Rwy 16R-34L)			GND CON 121.9 348.6 123.775 348.6 (Rwys 14-32, 17-35) (Rwy 16L-34R, 16R-34L)	
-------------------------	--	---	--	--	---	--



CLNC DEL 127.3 379.975	CPDLC
----------------------------------	-------



ELEV 4227	D	TDZE 4222
HIRL all Rwys TDZ/CL Rwys 16L, 16R, 17, 35, 34L, and 34R		



9000 TCH	tr 336°	OGD	VGSI and RNAV glidepath not coincident (VGSI Angle 3.00/TCH 73).					
*LNAV only.	IRUYU 1.5 NM to GITBE	CHEVL 6100	HAKKR	ALGIE	PLAGE	11000		
	*0.8 NM to GITBE					9000		
	GITBE					4900	6100	
	0.4	0.8	0.7 NM	3.8 NM	9.1 NM	3.1 NM	2.4 NM	
CATEGORY	A		B		C		D	E
LPV DA	4422/18		200 (200-1/2)					
LNAV/VNAV DA	4735/60		513 (600-1 1/4)					
LNAV MDA	4700/24	478 (500-1/2)	4700/50		478 (500-1)			

SW-4, 21 JUN 2018 to 19 JUL 2018

SW-4, 21 JUN 2018 to 19 JUL 2018