

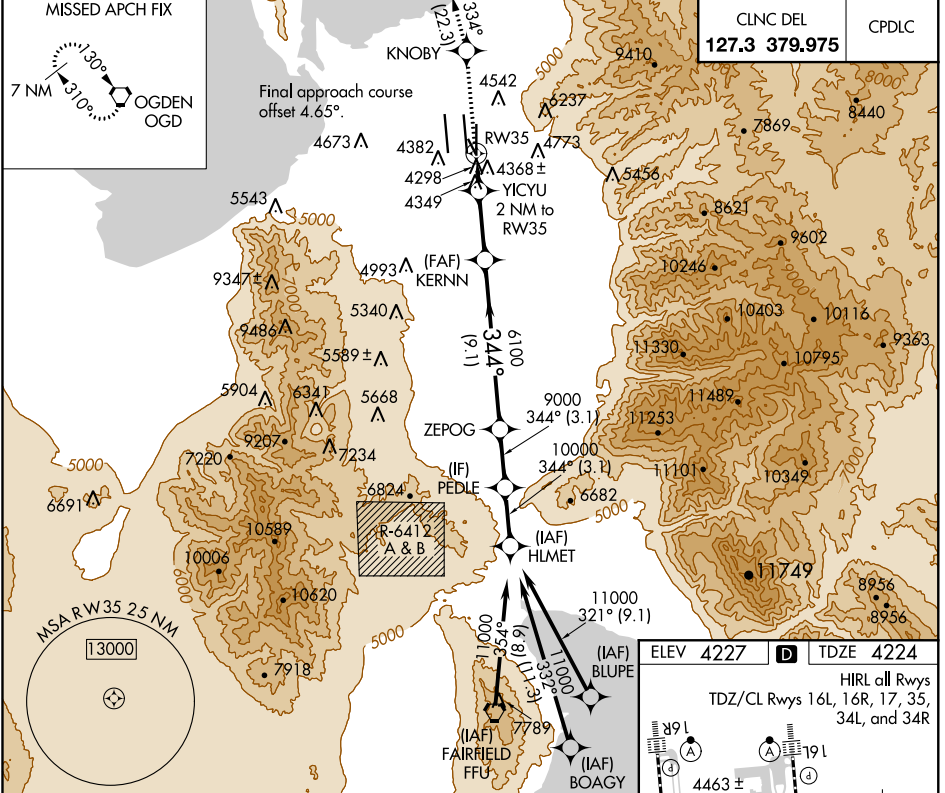
WAAS CH <b>77722</b> <b>W35A</b>	APP CRS <b>344°</b>	Rwy Idg TDZE Apt Elev	<b>9273</b> <b>4224</b> <b>4227</b>
--	------------------------	-----------------------------	---

# RNAV (GPS) RWY 35

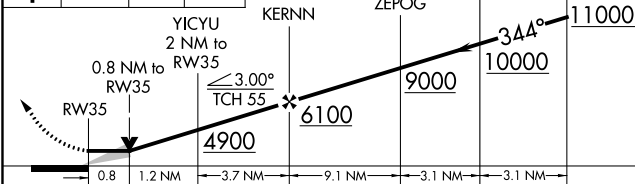
SALT LAKE CITY INTL (SLC)

	DME/DME RNP-0.3 NA. For inop ALS, increase LP Cat E to RVR 5000, increase LNAV Cat E to 1 1/2 SM.			MISSED APPROACH: Climb to 9000 direct KNOBY and on track 334° to OGD VORTAC and hold.	

D-ATIS <b>124.75</b>	SALT LAKE CITY APP CON <b>124.3 322.3</b>	SALT LAKE CITY TOWER			GND CON	
		<b>119.05 257.8</b> (Rwy 16L-34R)	<b>118.3 257.8</b> (Rwys 14-32, 17-35)	<b>132.65 336.4</b> (Rwy 16R-34L)	<b>121.9 348.6</b> (Rwys 14-32, 17-35)	<b>123.775 348.6</b> (Rwys 16L-34R, 16R-34L)

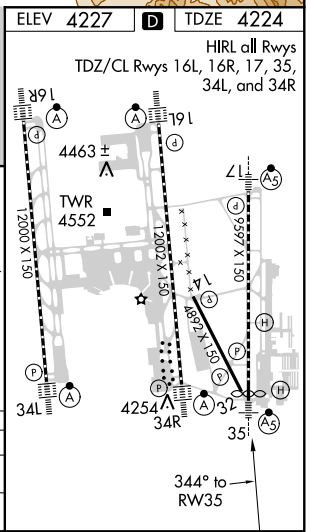


9000	KNOBY	tr	OGD	VGSI and descent angles not coincident (VGSI Angle 3.00/TCH 74).
		334°		



CATEGORY	A	B	C	D	E
LP MDA	4560/24	336 (400-1/2)	4560/26	336 (400-3/4)	
LNAV MDA	4760/24	536 (600-1/2)	4760/55	536 (600-1 1/4)	

CLNC DEL	CPDLC
<b>127.3 379.975</b>	



SW-4, 21 JUN 2018 to 19 JUL 2018

SW-4, 21 JUN 2018 to 19 JUL 2018