

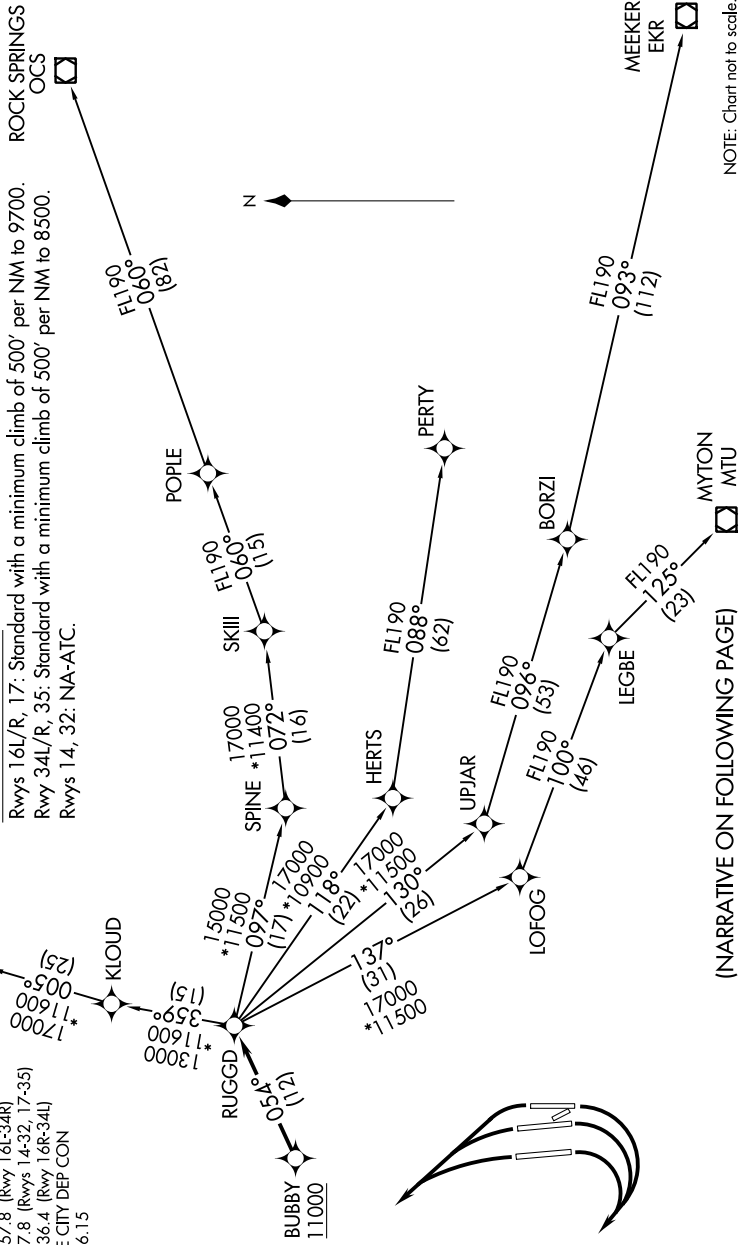
D-ATIS 124.75 125.625
 CLNC DEL 127.3 379.975
 CPDLC
 GND CON 121.9 348.6 (Rwys 14-32, 17-35)
 123.775 348.6 (Rwys 16L-34R, 16R-34L)
 SALT LAKE CITY TOWER 119.05 257.8 (Rwy 16L-34R)
 118.3 257.8 (Rwys 14-32, 17-35)
 132.65 336.4 (Rwy 16R-34L)
 SALT LAKE CITY DEP CON 135.5 316.15

HOLTR
 SAWGI
 KLOUD
 RUGGD
 BUBBY

NOTE: RNAV 1.
 NOTE: DME/DME/IRU or GPS required.
 NOTE: RADAR required.
 NOTE: Turbojet aircraft only.
 NOTE: Aircraft landing Denver Intl Airport, file the PERTY transition.

TAKEOFF MINIMUMS
 Rwys 16L/R, 17: Standard with a minimum climb of 500' per NM to 9700.
 Rwy 34L/R, 35: Standard with a minimum climb of 500' per NM to 8500.
 Rwys 14, 32: NA-ATC.

TOP ALTITUDE:
 FL230



NOTE: Chart not to scale.

(NARRATIVE ON FOLLOWING PAGE)

SW-4, 21 JUN 2018 to 19 JUL 2018

SW-4, 21 JUN 2018 to 19 JUL 2018