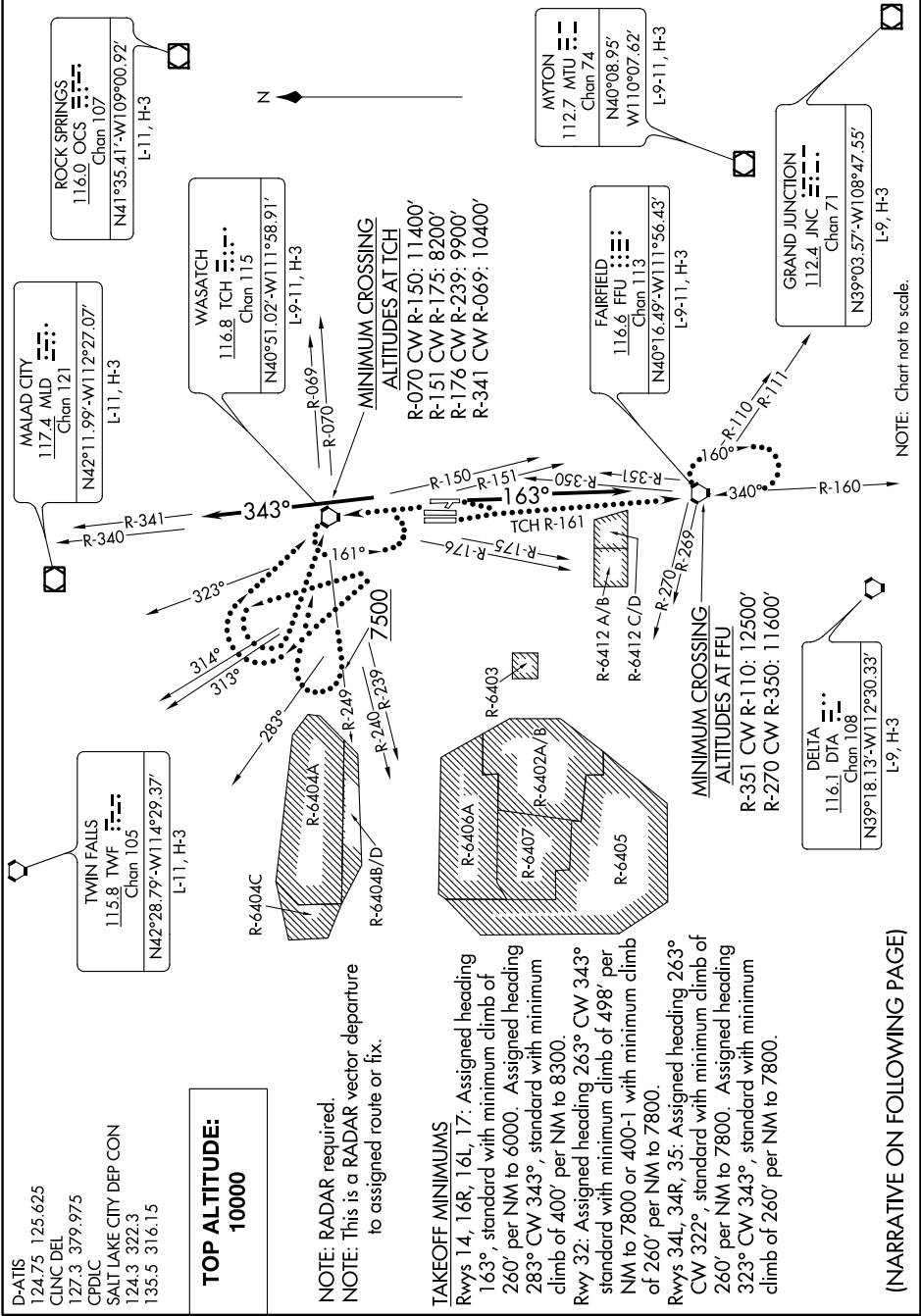


SW-4, 21 JUN 2018 to 19 JUL 2018

SW-4, 21 JUN 2018 to 19 JUL 2018



D-ATIS
124.75 125.625
CLNC DEL
127.3 379.975
CPDIC
SALT LAKE CITY DEP CON
124.3 322.3
135.5 316.15

**TOP ALTITUDE:
10000**

NOTE: RADAR required.
NOTE: This is a RADAR vector departure
to assigned route or fix.

TAKEOFF MINIMUMS
Rwys 14, 16R, 16L, 17: Assigned heading
163°, standard with minimum climb of
260' per NM to 6000. Assigned heading
283° CW 343°, standard with minimum
climb of 400' per NM to 8300.
Rwy 32: Assigned heading 263° CW 343°
standard with minimum climb of 498' per
NM to 7800 or 400-1 with minimum climb
of 260' per NM to 7800.
Rwys 34L, 34R, 35: Assigned heading 263°
CW 322°, standard with minimum climb of
260' per NM to 7800. Assigned heading
323° CW 343°, standard with minimum
climb of 260' per NM to 7800.

(NARRATIVE ON FOLLOWING PAGE)