

SEVYR THREE DEPARTURE

AL-365 (FAA)

SALT LAKE CITY INTL (SLC)
SALT LAKE CITY, UTAH

SW-4, 21 JUN 2018 to 19 JUL 2018

D-ATIS

124.75 125.625

CINC DEL

127.3 379.975

CPD/C

SALT LAKE CITY DEP CON

128.1 307.05

TAKEOFF MINIMUMS

Rwys 14, 16L/R, and 17: NA - Operational.

Rwy 32: 400-1 or standard with a minimum climb of 450' per NM to 7500.

Rwys 34L/R and 35: Aircraft assigned heading 263° CW through 322°

standard with a minimum climb of 260' per NM to 7500.

Aircraft assigned heading 323° CW through 343°

standard with a minimum climb of 340' per NM to 7500.

NOTE: This is a RADAR vector departure to assigned route or fix.

NOTE: For turbojet and turboprop aircraft only.

NOTE: RADAR required.

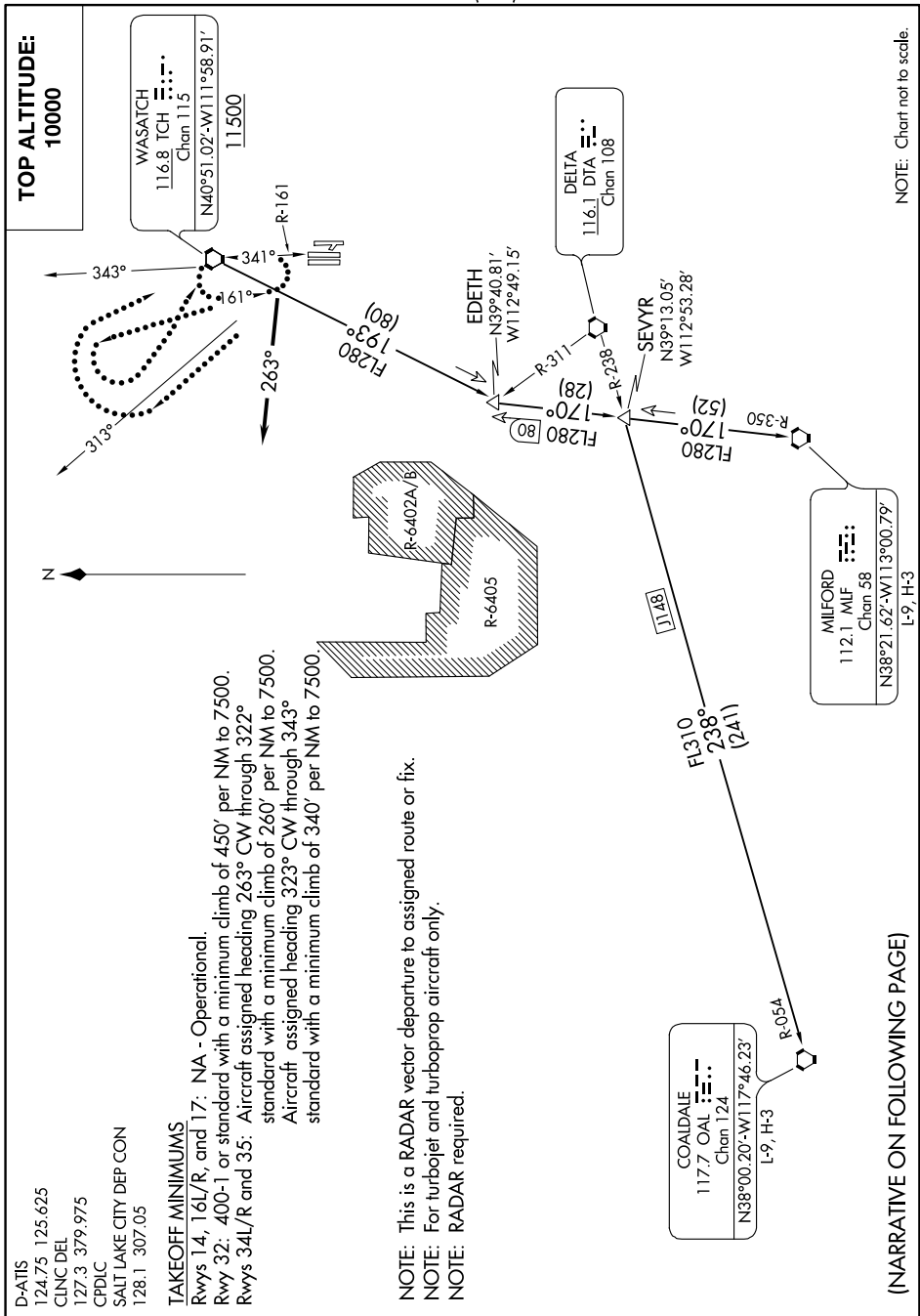
TOP ALTITUDE:
10000

WASATCH
116.8 TCH
Chan 115
N40°51.02'-W111°58.91'
11500

DELTA
116.1 DTA
Chan 108

MILFORD
112.1 MILF
Chan 58
N38°21.62'-W113°00.79'
L-9, H-3

COALDALE
117.7 OAL
Chan 124
N38°00.20'-W117°46.23'
L-9, H-3



(NARRATIVE ON FOLLOWING PAGE)

NOTE: Chart not to scale.

SW-4, 21 JUN 2018 to 19 JUL 2018

SEVYR THREE DEPARTURE