

SPANE SEVEN ARRIVAL

AL-365 (FAA)

SALT LAKE CITY INTL (SLC)
SALT LAKE CITY, UTAH

SW-4, 21 JUN 2018 to 19 JUL 2018

ARRIVAL ROUTE DESCRIPTION

HELPR TRANSITION (HELPR.SPANE7): From over HELPR via FFU R-100

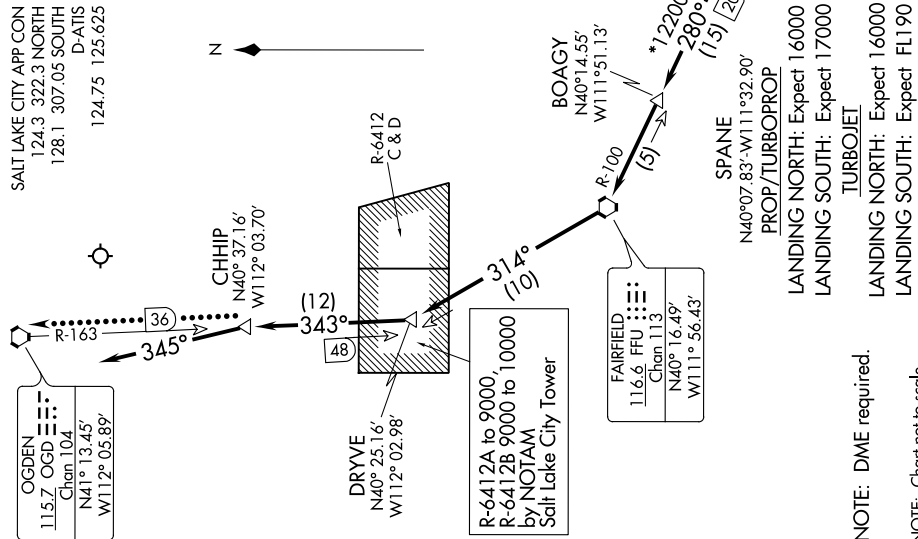
SPANE, thence

MEEKER TRANSITION (EKR.SPANE7): From over EKR VOR/DME via EKR R-258 to RACER, then via EKR R-258 and MTU R-078 to MTU VOR/DME, then via MTU R-255 to SPANE, thence

LANDING NORTH: . . . from SPANE on FFU R-100 to BOAGY, then to FFU VORTAC. Expect ILS RWY 34R approach.

LANDING SOUTH: . . . from SPANE on FFU R-100 to BOAGY, then to FFU VORTAC, then via FFU R-314 to DRYVE, then via OGD R-163 to CHHIP. After CHHIP, fly heading 345° for vectors to ILS or Visual RWY 16R approach.

LOST COMMUNICATIONS: LANDING SOUTH: In the event of lost communications, at CHHIP INT proceed direct OGD VORTAC. Maintain 12000 until OGD VORTAC.



SPANE SEVEN ARRIVAL

(SPANE.SPANE7) 17AUG17

SALT LAKE CITY, UTAH
SALT LAKE CITY INTL (SLC)

SW-4, 21 JUN 2018 to 19 JUL 2018