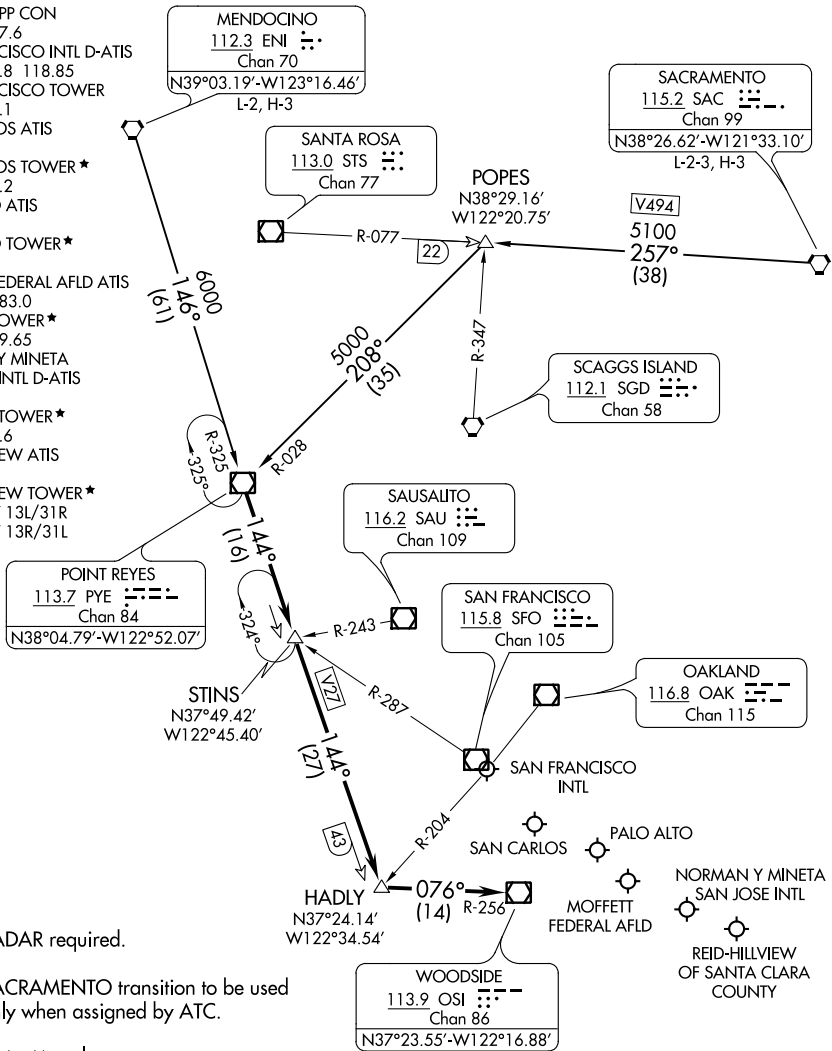


POINT REYES THREE ARRIVAL

AL-375 (FAA)

SAN FRANCISCO, CALIFORNIA

NORCAL APP CON
133.95 317.6
SAN FRANCISCO INTL D-ATIS
113.7 115.8 118.85
SAN FRANCISCO TOWER
120.5 269.1
SAN CARLOS ATIS
125.9
SAN CARLOS TOWER*
119.0 326.2
PALO ALTO ATIS
135.275
PALO ALTO TOWER*
118.6
MOFFETT FEDERAL AFLD ATIS
124.175 283.0
MOFFETT TOWER*
119.55 259.65
NORMAN Y MINETA
SAN JOSE INTL D-ATIS
126.95
SAN JOSE TOWER*
124.0 257.6
REID-HILLVIEW ATIS
125.2
REID-HILLVIEW TOWER*
119.8 RWY 13L/31R
126.1 RWY 13R/31L



NOTE: RADAR required.

NOTE: SACRAMENTO transition to be used only when assigned by ATC.

NOTE: Chart not to scale.

ARRIVAL ROUTE DESCRIPTION

MENDOCINO TRANSITION (ENI.PYE3): From over ENI VORTAC on ENI R-146 and PYE R-325 to PYE VOR/DME. Thence. . .

SACRAMENTO TRANSITION (SAC.PYE3): From over SAC VORTAC on SAC R-257 and PYE R-028 to PYE VOR/DME. Thence. . .

. . . From over PYE VOR/DME on PYE R-144 to HADLY, then on OSI R-256 to OSI VOR/DME. Expect RADAR vectors to final approach course.

POINT REYES THREE ARRIVAL

SAN FRANCISCO, CALIFORNIA

SW-2, 21 JUN 2018 to 19 JUL 2018

SW-2, 21 JUN 2018 to 19 JUL 2018