

WAAS CH 45824 W25A	APP CRS 246°	Rwy Idg TDZE 543 Apt Elev 543	3375
--	------------------------	---	-------------

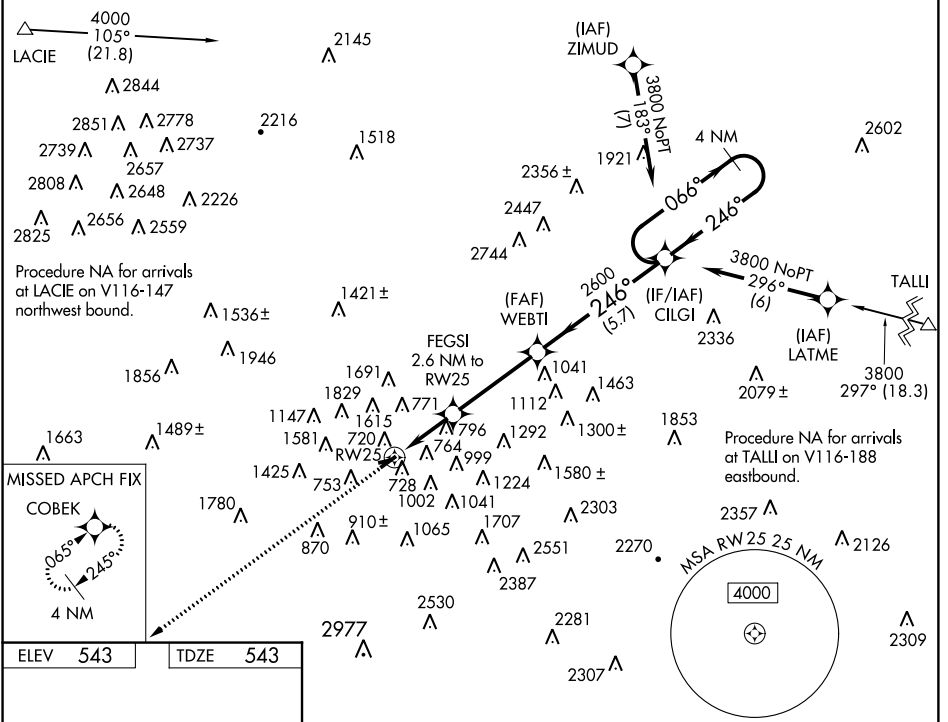
RNAV (GPS) RWY 25

WILKES-BARRE WYOMING VALLEY (WBW)

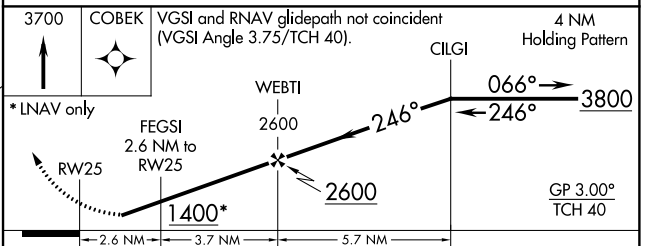
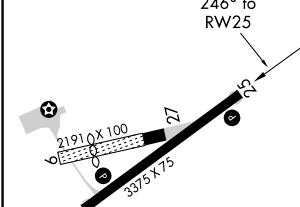
NA Baro-VNAV NA. Use Wilkes-Barre/Scranton altimeter setting. DME/DME RNP-0.3 NA.
 Circling Rwy 7 NA at night. Circling NA NW of Rwy 7-25.
 Helicopter visibility reduction below 3/4 SM NA.

MISSED APPROACH:
 Climb to 3700 direct COBEK and hold.

WILKES-BARRE/SCRANTON ATIS 111.6	WILKES-BARRE APP CON 126.3 256.7	UNICOM 122.8 (CTAF) 0
--	--	---------------------------------



ELEV 543	TDZE 543
-----------------	-----------------



CATEGORY	A	B	C	D
LPV DA	981-1½	438 (500-1½)		NA
RNAV/ VNAV DA	1184-2¼	641 (700-2¼)		NA
RNAV MDA	1240-1	697 (700-1)		NA
CIRCLING	1280-1 737 (800-1)	1380-1¼ 837 (900-1¼)		NA

NE-4, 21 JUN 2018 to 19 JUL 2018

NE-4, 21 JUN 2018 to 19 JUL 2018