

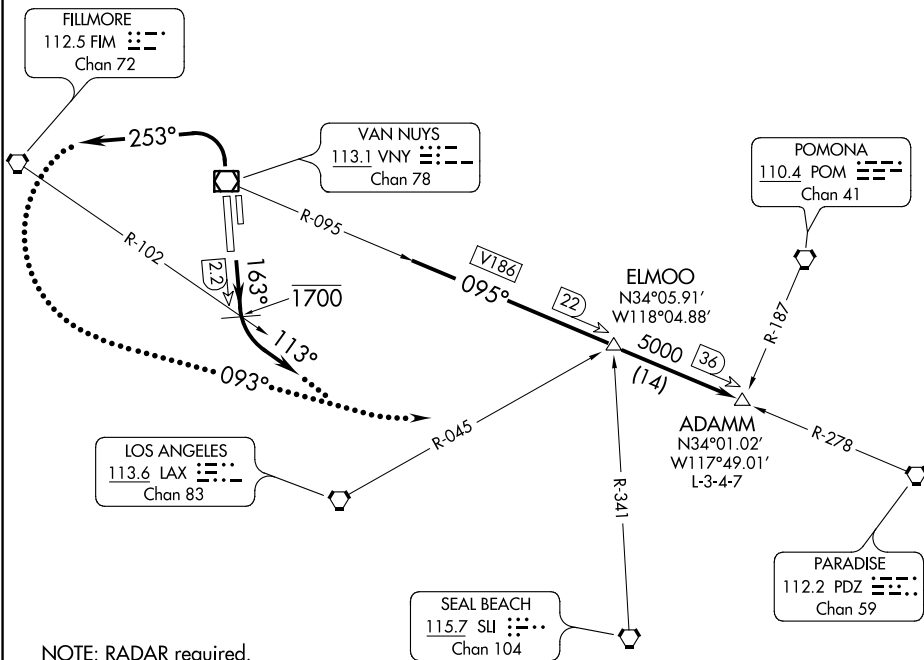
**TOP ALTITUDE:  
ASSIGNED BY ATC**

ATIS  
127.55  
CLNC DEL  
126.6 239.0  
GND CON  
121.7  
SOCAL DEP CON  
124.6 298.85

### TAKEOFF MINIMUMS

Rwys 16L/R: Standard with minimum climb of 300' per NM to 3800.

Rwys 34L/R: Standard with minimum climb of 480' per NM to 4200.



NOTE: RADAR required.  
NOTE: DME required.

NOTE: Chart not to scale.

### DEPARTURE ROUTE DESCRIPTION

TAKEOFF RUNWAYS 16L/R: Climb on heading 163°, cross FIM R-102 or VNY 2.2 DME at or below 1700. Then climbing left turn heading 113°, thence. . .

TAKEOFF RUNWAYS 34L/R: Climbing left turn heading 253°, thence. . .

. . . expect RADAR vectors to VNY R-095 to ADAMM INT or filed/assigned route. Maintain ATC assigned altitude, expect filed altitude/flight level 10 minutes after departure.

LOST COMMUNICATIONS: If not in contact with departure control within 3 NM, turn left heading 093° to intercept VNY R-095 to ADAMM INT maintain 5000' or as assigned.

SW-3, 21 JUN 2018 to 19 JUL 2018

SW-3, 21 JUN 2018 to 19 JUL 2018