

# CANOGA TWO DEPARTURE

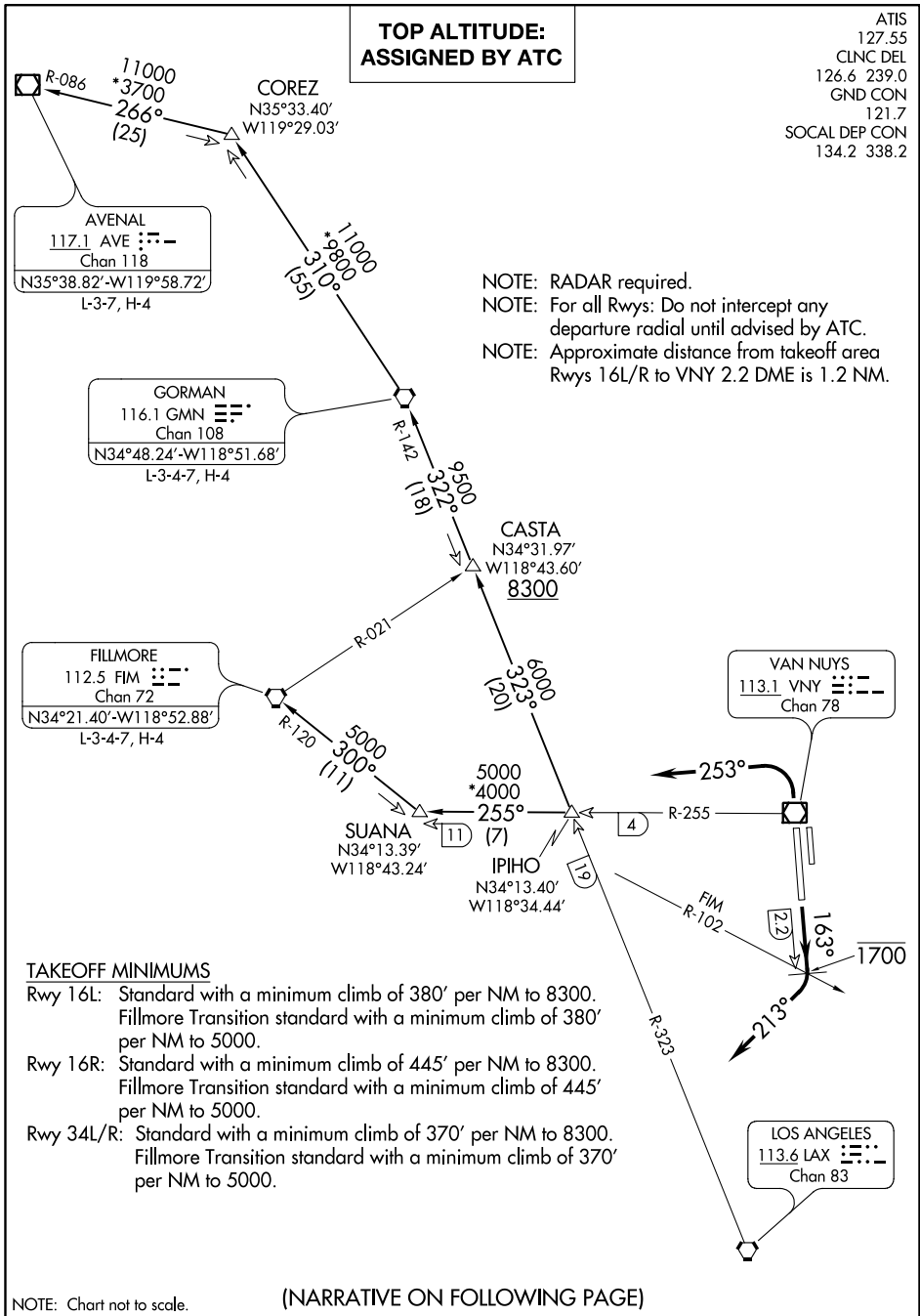
AL-552 (FAA)

VAN NUYS (VNY)  
VAN NUYS, CALIFORNIA

ATIS  
127.55  
CLNC DEL  
126.6 239.0  
GND CON  
121.7  
SOCAL DEP CON  
134.2 338.2

**TOP ALTITUDE:  
ASSIGNED BY ATC**

NOTE: RADAR required.  
NOTE: For all Rwy: Do not intercept any departure radial until advised by ATC.  
NOTE: Approximate distance from takeoff area Rwys 16L/R to VNY 2.2 DME is 1.2 NM.



(NARRATIVE ON FOLLOWING PAGE)

SW-3, 21 JUN 2018 to 19 JUL 2018

SW-3, 21 JUN 2018 to 19 JUL 2018