

# HARYS TWO DEPARTURE (RNAV)

AL-552 (FAA)

VAN NUYS (VNY)  
VAN NUYS, CALIFORNIA

SW-3, 21 JUN 2018 to 19 JUL 2018

**TOP ALTITUDE:  
FL230**

NOTE: DME/DME/IRU or GPS required.

NOTE: RADAR required.

NOTE: RNAV 1.

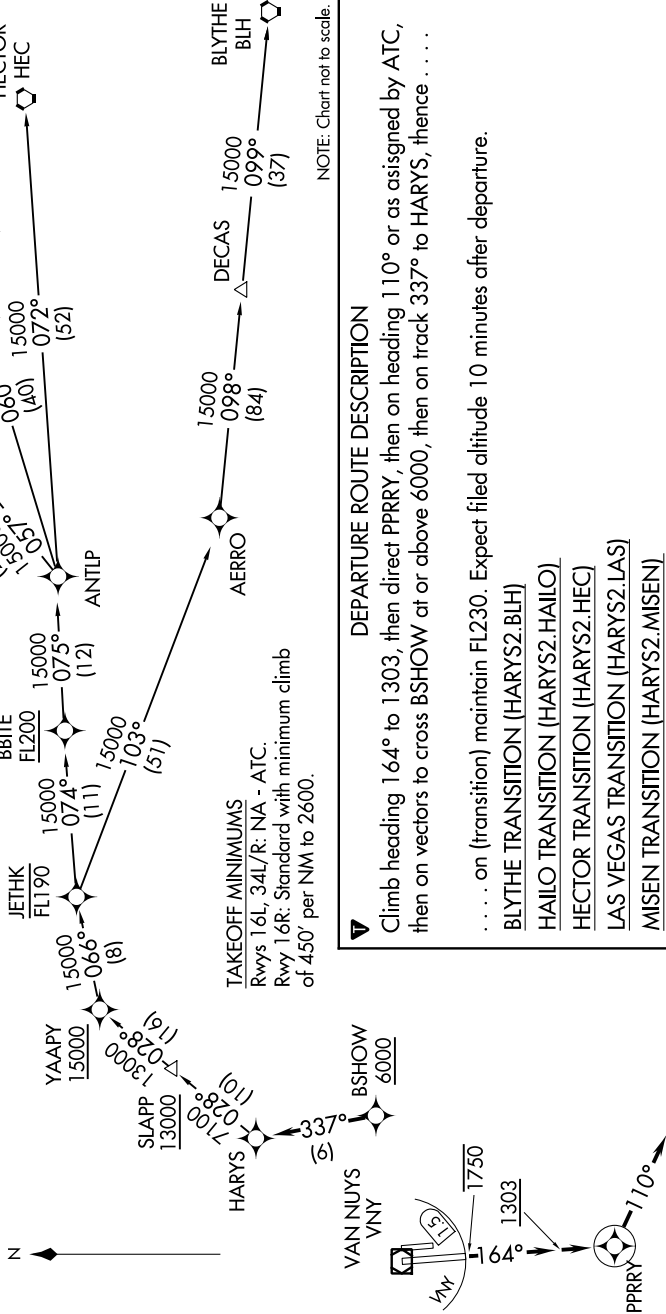
NOTE: Turboplet and high performance Turboprop aircraft only.

NOTE: MISEN transition restricted to aircraft landing LAS complex.

NOTE: HAILO transition ATC only.

NOTE: Cross DER/VNY VOR/DME 1.5 DME south of or below 1750.

ATIS 127.55  
CLNCDEL 126.6 239.0  
GNDCON 121.7  
SOCAL DEP CON 124.6 298.85



## DEPARTURE ROUTE DESCRIPTION

Climb heading 164° to 1303, then direct PPRRY, then on heading 110° or as assigned by ATC, then on vectors to cross BSHOW at or above 6000, then on track 337° to HARYS, thence . . . .

. . . . on (transition) maintain FL230. Expect filed altitude 10 minutes after departure.

BLYTHE TRANSITION (HARYS2.BLH)

HAILO TRANSITION (HARYS2.HAILO)

HECTOR TRANSITION (HARYS2.HEC)

LAS VEGAS TRANSITION (HARYS2.LAS)

MISEN TRANSITION (HARYS2.MISEN)

# HARYS TWO DEPARTURE (RNAV)

(HARYS2.HARYS) 24MAY18

VAN NUYS, CALIFORNIA  
VAN NUYS (VNY)

SW-3, 21 JUN 2018 to 19 JUL 2018