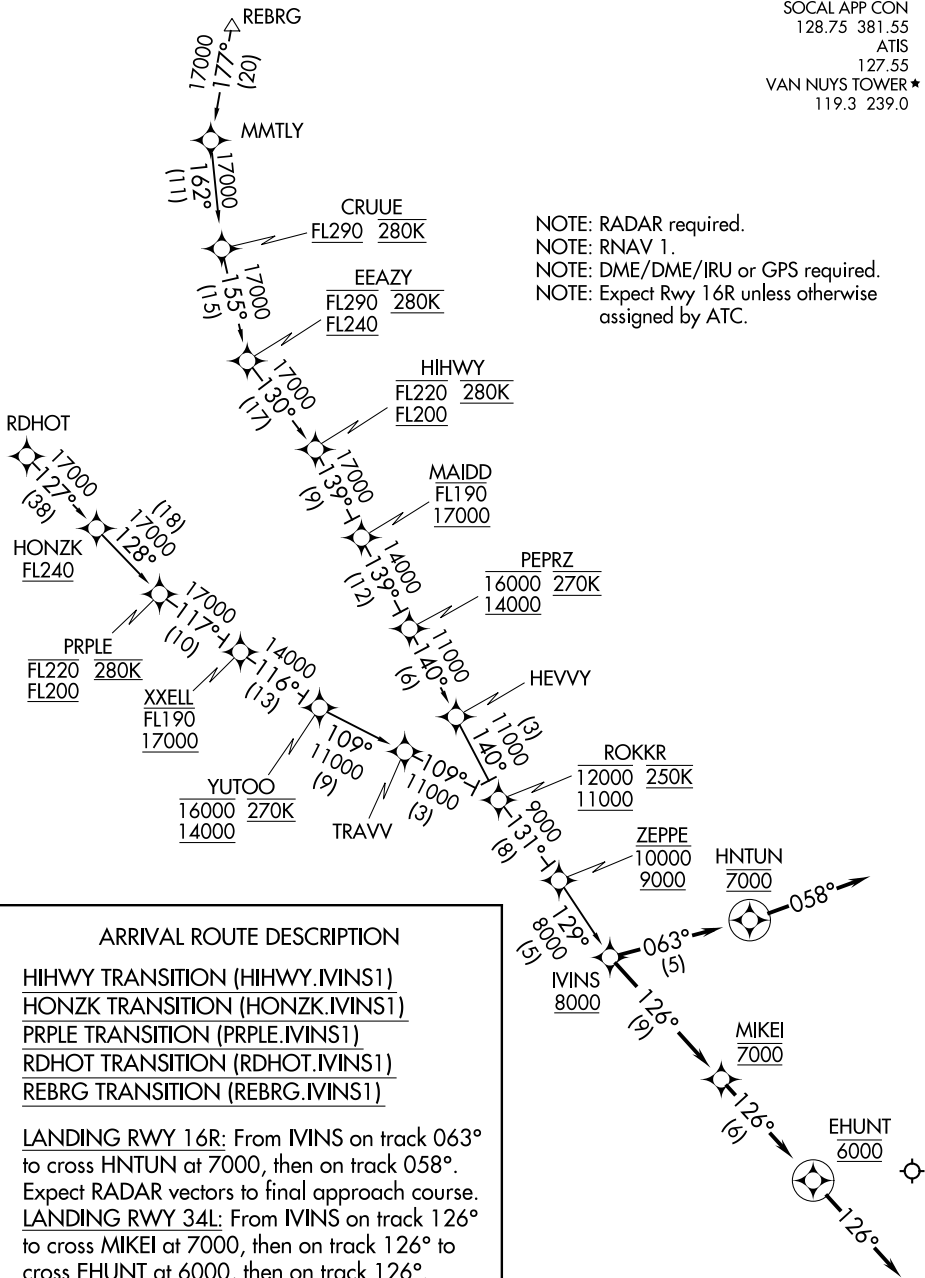


IVINS ONE ARRIVAL (RNAV)

SOCAL APP CON
128.75 381.55
ATIS
127.55
VAN NUYS TOWER ★
119.3 239.0

NOTE: RADAR required.
NOTE: RNAV 1.
NOTE: DME/DME/IRU or GPS required.
NOTE: Expect Rwy 16R unless otherwise assigned by ATC.



ARRIVAL ROUTE DESCRIPTION

- HIHWY TRANSITION (HIHWY.IVINS1)
- HONZK TRANSITION (HONZK.IVINS1)
- PRPLE TRANSITION (PRPLE.IVINS1)
- RDHOT TRANSITION (RDHOT.IVINS1)
- REBRG TRANSITION (REBRG.IVINS1)

LANDING RWY 16R: From IVINS on track 063° to cross HNTUN at 7000, then on track 058°. Expect RADAR vectors to final approach course.

LANDING RWY 34L: From IVINS on track 126° to cross MIKEL at 7000, then on track 126° to cross EHUNT at 6000, then on track 126°. Expect RADAR vectors to final approach course.

NOTE: Chart not to scale.

IVINS ONE ARRIVAL (RNAV)

SW-3, 21 JUN 2018 to 19 JUL 2018

SW-3, 21 JUN 2018 to 19 JUL 2018