


# ILS Y RWY 16R

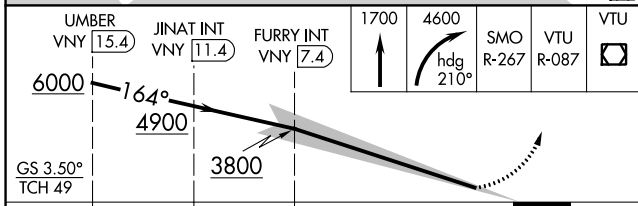
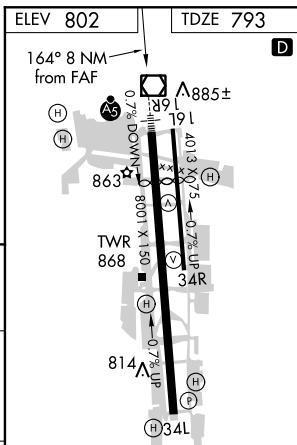
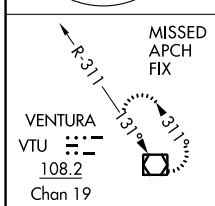
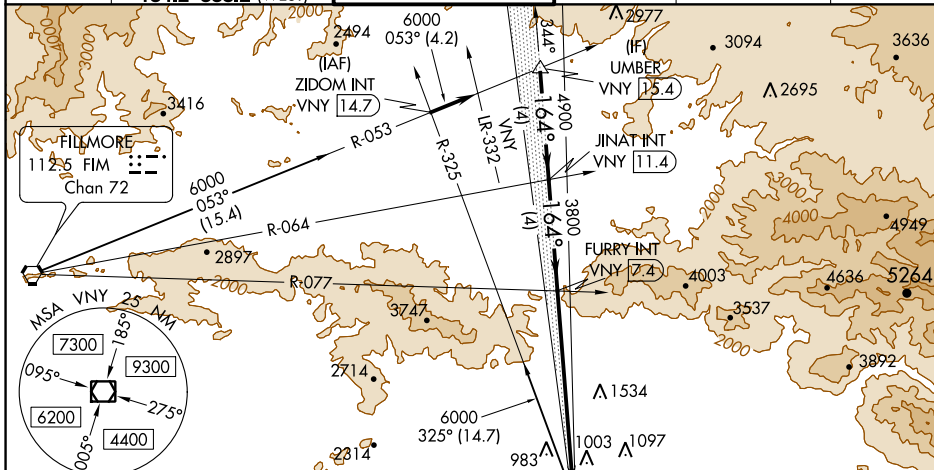
VAN NUYS (VNY)

LOC I-VNY	APP CRS	Rwy Idg	<b>6569</b>
<b>111.3</b>	<b>164°</b>	TDZE	<b>793</b>
		Apt Elev	<b>802</b>

**▼** For inop MALS/R, increase S-ILS all Cats visibility to 2 SM. When local altimeter setting not received, use Burbank altimeter setting and increase DA to 1480 feet and all Cats visibility to 1½ SM. Autopilot coupled approach NA below 1900.

**MALS/R**  MISSED APPROACH: Climb to 1700 then climbing right turn to 4600 on heading 210° and on SMO VOR/DME R-267 and on VTU VOR/DME R-087 to VTU VOR/DME and hold.

ATIS	SOCAL APP CON	VAN NUYS TOWER ★	GND CON	CLNC DEL	UNICOM
<b>127.55</b>	<b>120.4 360.6 (NORTH)</b> <b>134.2 338.2 (WEST)</b>	<b>119.3 (CTAF) 239.0</b>	<b>121.7</b>	<b>126.6 239.0</b>	<b>122.95</b>



CATEGORY	A	B	C	D
S-ILS 16R		1461-1½	668 (700-1½)	

HIRL Rwy 16R-34L **①**  
MIRL Rwy 16L-34R

SW-3, 21 JUN 2018 to 19 JUL 2018

SW-3, 21 JUN 2018 to 19 JUL 2018