

VOR/DME VNY <b>113.1</b> Chan <b>78</b>	APP CRS <b>075°</b>	Rwy Idg TDZE Apt Elev <b>802</b>	<b>N/A</b> <b>N/A</b> <b>802</b>
---	------------------------	---	--

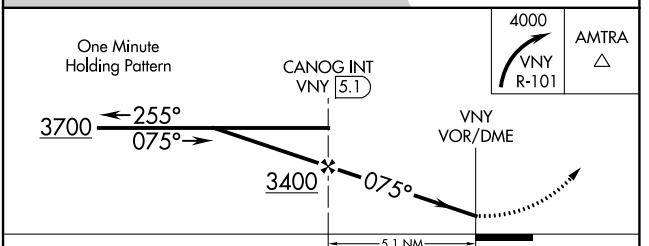
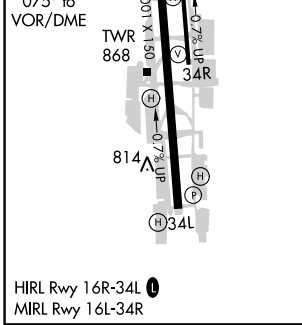
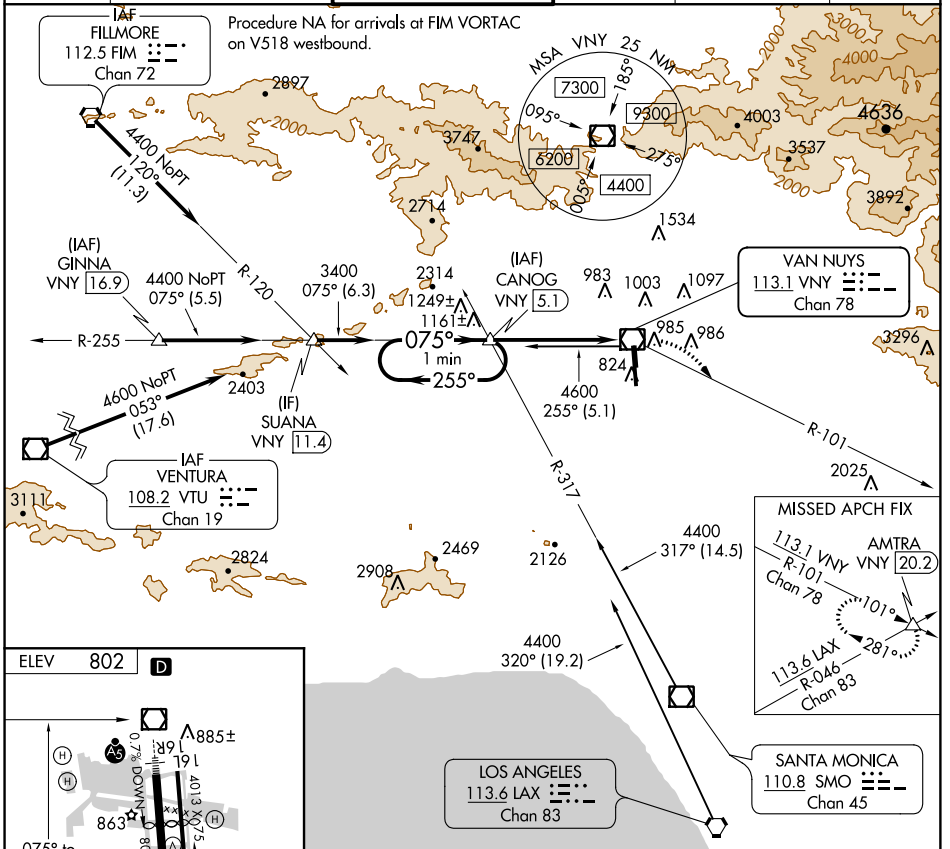
# VOR-A

VAN NUYS (VNY)

**⚠** Circling Rwy 16L NA at night.  
Rwy 16L helicopter visibility reduction below 1 SM NA.

MISSED APPROACH: Climbing right turn to 4000 on VNY VOR/DME R-101 to AMTRA INT/20.2 DME and hold.

ATIS <b>127.55</b>	SOCAL APP CON <b>120.4 360.6 (NORTH)</b> <b>134.2 338.2 (WEST)</b>	<b>VAN NUYS TOWER ★</b> <b>119.3 (CTAF) 0 239.0</b>	GND CON <b>121.7</b>	CLNC DEL <b>126.6 239.0</b>	UNICOM <b>122.95</b>
-----------------------	--	--	-------------------------	--------------------------------	-------------------------



CATEGORY	A	B	C	D
<b>C</b> CIRCLING	1500-1	698 (700-1)	1500-2 698 (700-2)	2060-3 1258 (1300-3)

SW-3, 21 JUN 2018 to 19 JUL 2018

SW-3, 21 JUN 2018 to 19 JUL 2018