

PEVEE SIX DEPARTURE (RNAV)

SW-3, 21 JUN 2018 to 19 JUL 2018

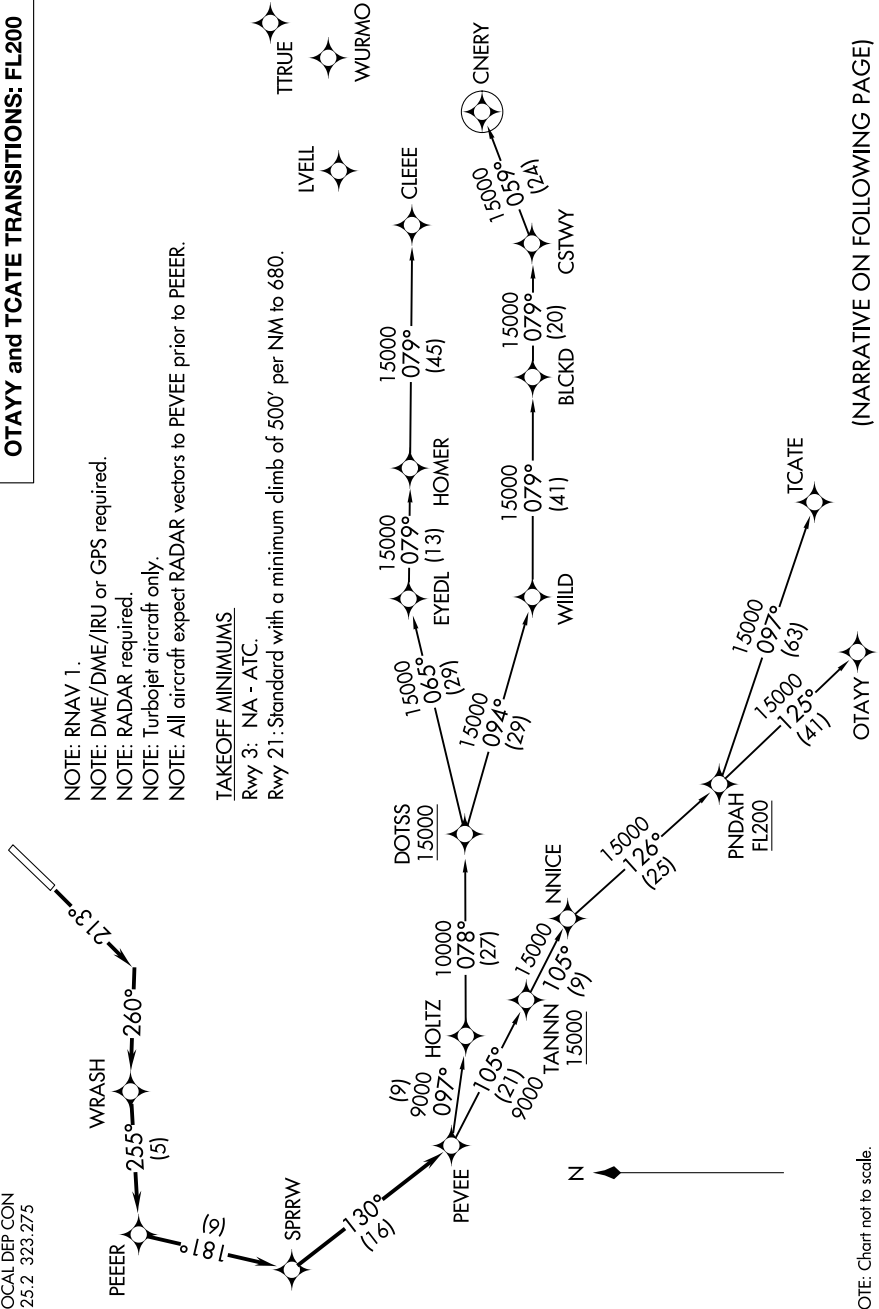
TOP ALTITUDE:
CLEEE and CNERY TRANSITIONS: 17000;
OTAYY and TCATE TRANSITIONS: FL200

NOTE: RNAV 1.
NOTE: DME/DME/IRU or GPS required.
NOTE: RADAR required.
NOTE: Turbojet aircraft only.
NOTE: All aircraft expect RADAR vectors to PEVEE prior to PEEER.

TAKEOFF MINIMUMS

Rwy 3: NA - ATC.
Rwy 21: Standard with a minimum climb of 500' per NM to 680.

SANTA MONICA TOWER*
120.1 257.8
SOCAL DEP CON
125.2 323.275



NOTE: Chart not to scale.

(NARRATIVE ON FOLLOWING PAGE)

SW-3, 21 JUN 2018 to 19 JUL 2018