

VOR/DME SMO <b>110.8</b> Chan 45	APP CRS <b>212°</b>	Rwy Idg TDZE Apt Elev	<b>N/A</b> <b>N/A</b> <b>177</b>
--	------------------------	-----------------------------	--

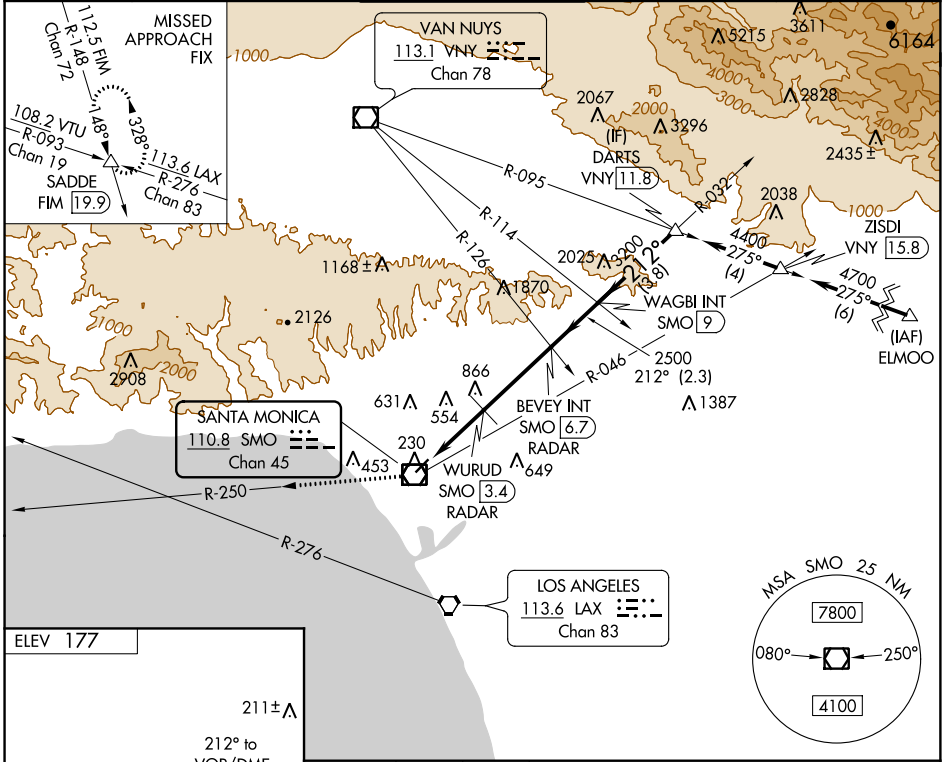
# VOR-A

## SANTA MONICA MUNI (SMO)

**NA** Helicopter visibility reduction below 1 SM NA.  
 Procedure NA for arrivals at ELMOO on V186 southeast bound.  
 Procedure NA at night.  
 Circling NA NW of Rwy 3-21.

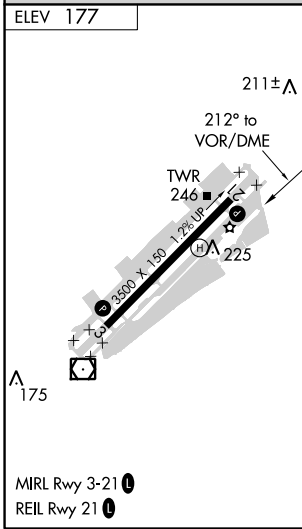
MISSED APPROACH: Climb to 5000 on SMO VOR/DME R-250 and on FIM VORTAC R-148 to SADDE INT/19.9 DME and hold, continue climb-in-hold to 5000.

ATIS <b>119.15</b>	SOCAL APP CON <b>128.5 235.975</b>	SANTA MONICA TOWER * <b>120.1 (CTAF) 0 257.8</b>	GND CON <b>121.9</b>	UNICOM <b>122.95</b>
-----------------------	---------------------------------------	---	-------------------------	-------------------------



SW-3, 21 JUN 2018 to 19 JUL 2018

SW-3, 21 JUN 2018 to 19 JUL 2018



	5000	FIM R-148	SADDE	BEVEY INT SMO [6.7] RADAR	WAGBI INT SMO [9]	DARTS VNY [11.8]	
	SMO R-250						
	SMO VOR/DME	WURUD SMO [3.4] RADAR					
				2500	3200	4400	
				3.4 NM	3.2 NM	2.3 NM	3.8 NM
CATEGORY	A	B	C	D			
<b>CIRCLING</b>	1540-1¼ 1363 (1400-1¼)	1540-1½ 1363 (1400-1½)	1540-3	1363 (1400-3)			
WURUD FIX MINIMUMS							
<b>CIRCLING</b>	860-1	683 (700-1)	1180-3	1003 (1100-3)			