

LOC I-HHR	APP CRS	Rwy Idg	4193
109.1	253°	TDZE	63
		Apt Elev	66

LOC RWY 25

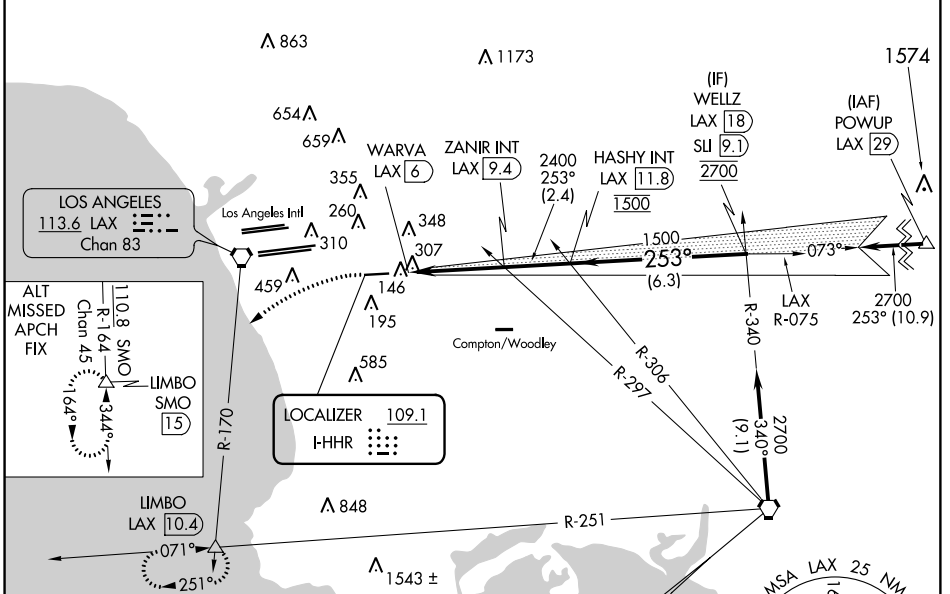
JACK NORTHROP FIELD/HAWTHORNE MUNI (HHR)

⚠ Inop table does not apply to Cat C. Rwy 25 helicopter visibility reduction below 3/4 SM NA. Circling NA when control tower closed. When local altimeter setting not received, use Los Angeles Intl altimeter setting. Simultaneous approach authorized with LAX 25L/R 24L/R. Circling NA north of Rwy 7-25. DME from LAX VORTAC. Simultaneous reception of I-HHR and LAX DME required.

ODALS

MISSED APPROACH: Climbing left turn to 3000 on heading 210° and LAX VORTAC R-170 to LIMBO INT/LAX 10.4 DME and hold.

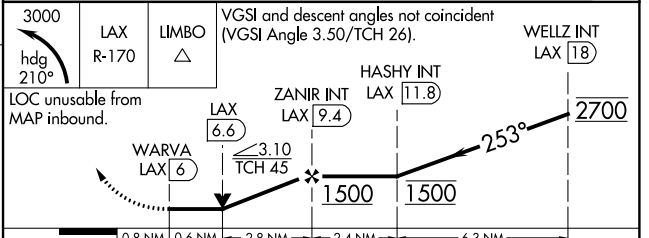
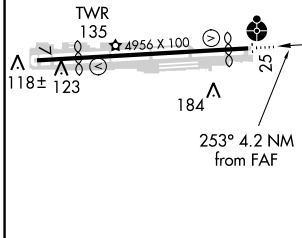
ATIS 118.4	SOCAL APP CON 124.9 269.0	HAWTHORNE TOWER* 121.1(CTAF) 257.8	GND CON 125.1
----------------------	-------------------------------------	--	-------------------------



SW-3, 21 JUN 2018 to 19 JUL 2018

SW-3, 21 JUN 2018 to 19 JUL 2018

ELEV 66	D	TDZE 63
----------------	----------	----------------



CATEGORY	A	B	C	D
S-25	580-3/4	517 (600-3/4)	580-1 3/8	517 (600-1 1/8)
C CIRCLING	620-1	554 (600-1)	780-2 714 (800-2)	780-2 1/4 714 (800-2 1/4)