


WAAS CH 65825 W25A	APP CRS 253°	Rwy Idg TDZE 63 Apt Elev 66	4193
---------------------------------	------------------------	---	-------------

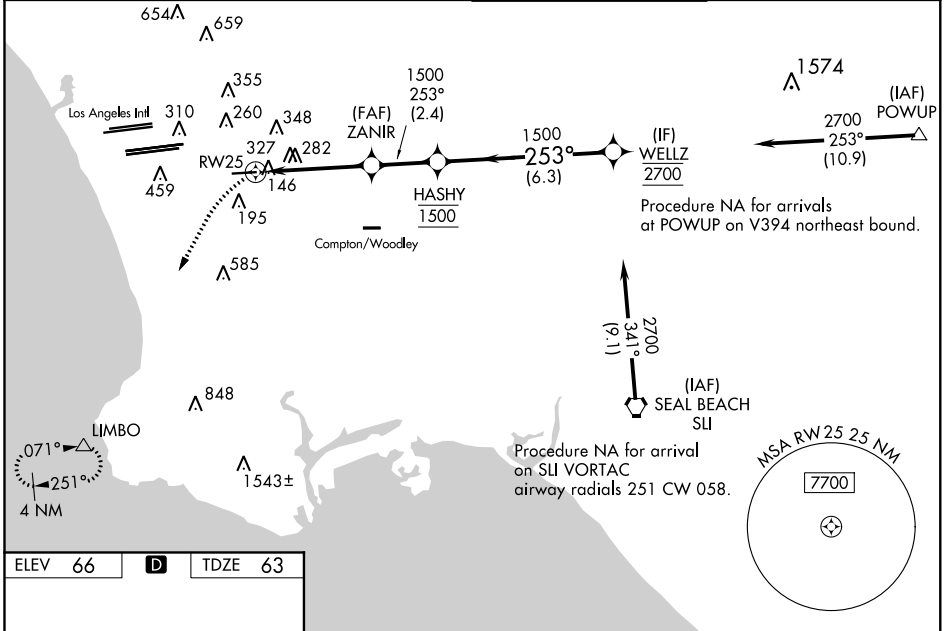
RNAV (GPS) RWY 25

JACK NORTHROP FIELD/HAWTHORNE MUNI (HHR)

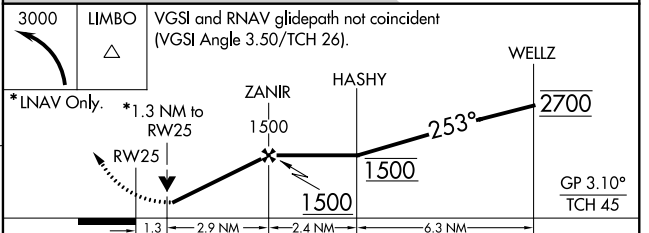
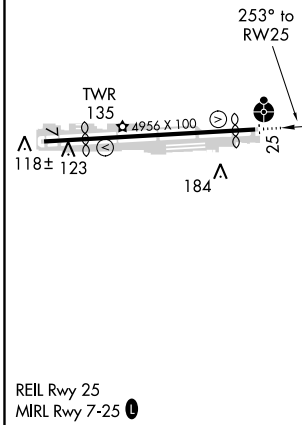
▽ For uncompensated Baro-VNAV systems, LNAV/VNAV NA below 5°C (41°F) or above 49°C (120°F). Circling NA north of Rwy 7-25. Helicopter visibility reduction below 3/4 SM NA. DME/DME RNP-0.3 NA. For inop ALS increase LPV all visibilities to 1 1/2 SM, LNAV/VNAV all visibilities to 2 SM. Inop table does not apply to LNAV Cat C. Circling NA when control tower closed. Simultaneous approach authorized with LAX 25L/R, 24L/R. When local altimeter setting not received, use Los Angeles Intl altimeter setting. LNAV and LNAV/VNAV only approach NA during simultaneous operations. Use of FD or AP providing RNAV track guidance required during simultaneous operations.

ODALS
 MISSED APPROACH:
 Climbing left turn to 3000 direct LIMBO and hold.

ATIS 118.4	SOCAL APP CON 124.9 269.0	HAWTHORNE TOWER* 121.1(CTAF) 257.8	GND CON 125.1
----------------------	-------------------------------------	--	-------------------------



ELEV 66	D	TDZE 63
---------	----------	---------



CATEGORY	A	B	C	D
LPV DA		571-1 1/2	508 (600-1 1/2)	
LNAV/VNAV DA		653-1 7/8	590 (600-1 7/8)	
LNAV MDA	580-3/4	517 (600-3/4)	580-1 3/8	517 (600-1 3/8)
C CIRCLING	620-1	554 (600-1)	780-2 714 (800-2)	780-2 1/4 714 (800-2 1/4)

SW-3, 21 JUN 2018 to 19 JUL 2018

SW-3, 21 JUN 2018 to 19 JUL 2018