

VORTAC LAX 113.6 Chan 83	APP CRS 261°	Rwy Idg TDZE Apt Elev	4193 63 66
---------------------------------------	------------------------	-----------------------------	---------------------------------------

VOR RWY 25

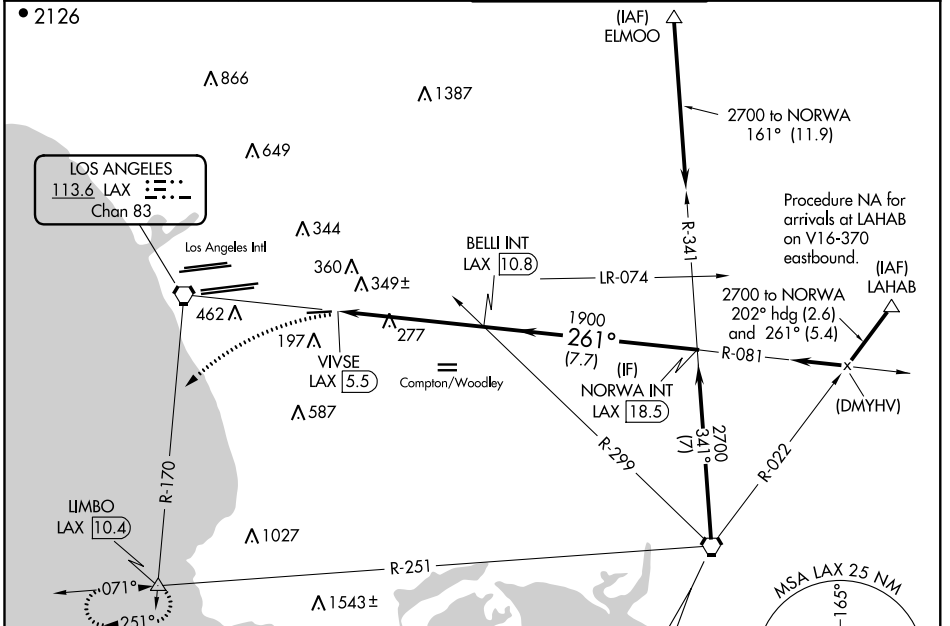
JACK NORTHROP FIELD/HAWTHORNE MUNI (HHR)

⚠ Inoperative table does not apply. Circling NA north of Rwy 7-25. Visibility reduction by helicopters NA. Circling NA when control tower closed. When local altimeter setting not received, use Los Angeles Intl altimeter setting.

ODALS

MISSED APPROACH: Climbing left turn to 3000 via heading 210° and LAX VORTAC R-170 to LIMBO INT/LAX 10.4 DME and hold.

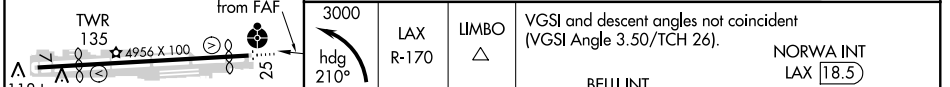
ATIS 118.4	SOCAL APP CON 124.9 269.0	HAWTHORNE TOWER ★ 121.1 (CTAF) 257.8	GND CON 125.1
----------------------	-------------------------------------	--	-------------------------



ELEV 66	TDZE 63
---------	---------



Procedure NA for arrivals at SLI VORTAC on V459-597 southeast bound.



	0.3	5.3 NM	7.7 NM	
CATEGORY	A	B	C	D
S-25	600-1	537 (600-1)	600-1½ 537 (600-1½)	600-1¾ 537 (600-1¾)
CIRCLING	600-1	534 (600-1)	620-1½ 554 (600-1½)	620-2 554 (600-2)

REIL Rwy 25
MIRL Rwy 7-25

FAF to MAP 5.3 NM

Knots	60	90	120	150	180
Min:Sec	5:18	3:32	2:39	2:07	1:46

SW-3, 21 JUN 2018 to 19 JUL 2018

SW-3, 21 JUN 2018 to 19 JUL 2018