

LOC I-POC 110.5	APP CRS 259°	Rwy Idg TDZE 4151 1005	Apt Elev 1011
---------------------------	------------------------	----------------------------------	-------------------------

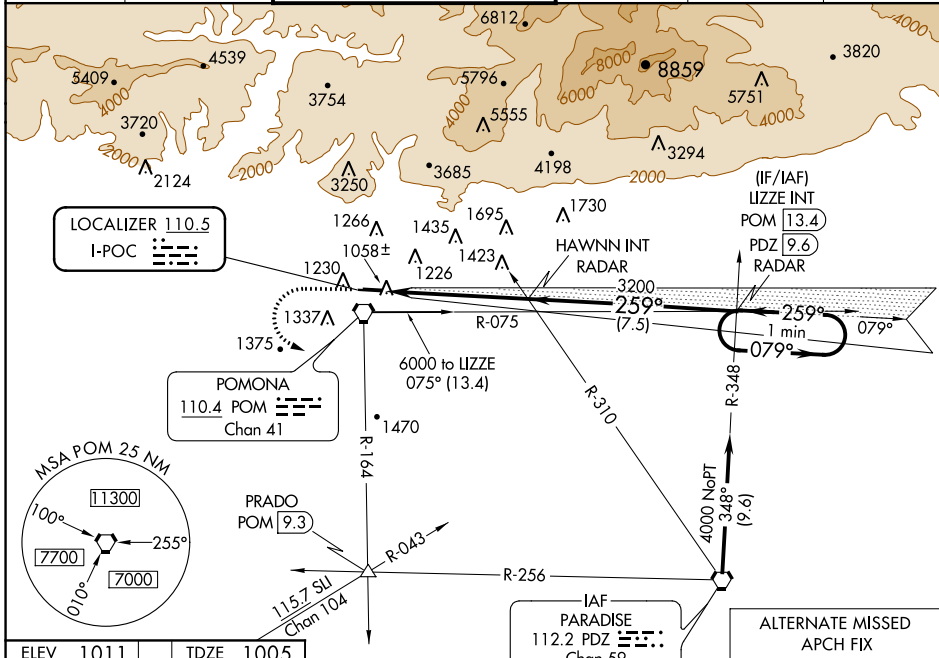
ILS RWY 26L

BRACKETT FIELD (POC)

⚠ Helicopter visibility reduction below $\frac{3}{4}$ SM not authorized.
⚠ When local altimeter setting not received, use Ontario Intl altimeter setting and increase DA to 1366.

MISSED APPROACH: Climb to 2100, then climbing left turn to 4000 via POM VORTAC R-164 to PRADO INT/POM 9.3 DME.

ATIS 124.4	SOCAL APP CON 125.5 318.2	BRACKETT TOWER* RWY 8R/26L 118.2 (CTAF)	RWY 8L/26R 133.3	GND CON 125.0	CLNC DEL 121.875	UNICOM 122.95
----------------------	-------------------------------------	--	----------------------------	-------------------------	----------------------------	-------------------------



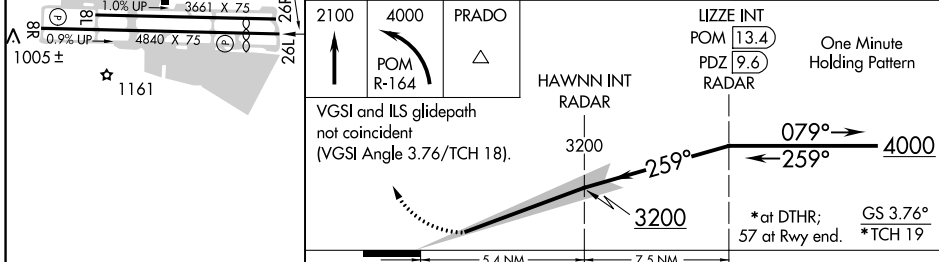
SW-3, 21 JUN 2018 to 19 JUL 2018

SW-3, 21 JUN 2018 to 19 JUL 2018

ELEV 1011	TDZE 1005
-----------	-----------

Procedure NA for arrivals at PDZ VORTAC on airway radials 292 CW 030.
 When GS not used, use LOC RWY 26L procedure.

ALTERNATE MISSED APCH FIX
 PARADISE PDZ 112.2 Chan 59
 078° 258° R-078



REIL Rws 8R and 26L MIRL Rwy 8R-26L	CATEGORY	A	B	C	D
	S-ILS 26L	1335-1 330 (400-1)		NA	