

LOC I-POC 110.5	APP CRS 259°	Rwy Idg 4151
		TDZE 1005
		Apt Elev 1011

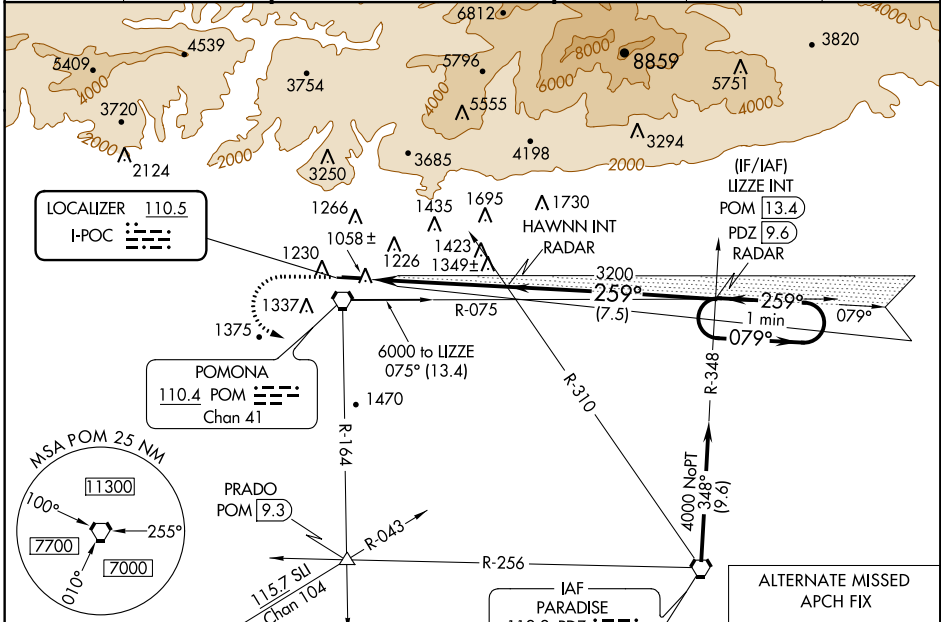
LOC RWY 26L

BRACKETT FIELD (POC)

⚠ Helicopter visibility reduction below 3/4 SM not authorized. When local altimeter setting not received, use Ontario Intl altimeter setting and increase all MDAs 40 feet. Night landing: Rwy 8L NA, Rwy 8R operational VGSI required, remain on or above VGSI glidepath until threshold.

⚠ MISSED APPROACH: Climb to 2100 then climbing left turn to 4000 via POM VORTAC R-164 to PRADO INT/POM 9.3 DME.

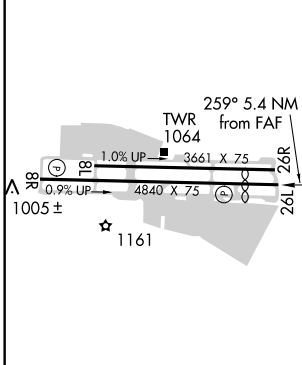
ATIS 124.4	SOCAL APP CON 125.5 318.2	BRACKETT TOWER* RWY 8R/26L 118.2 (CTAF)	RWY 8L/26R 133.3	GND CON 125.0	CLNC DEL 121.875	UNICOM 122.95
----------------------	-------------------------------------	--	----------------------------	-------------------------	----------------------------	-------------------------



SW-3, 21 JUN 2018 to 19 JUL 2018

SW-3, 21 JUN 2018 to 19 JUL 2018

ELEV 1011	TDZE 1005
-----------	-----------



Procedure NA for arrivals at PDZ VORTAC on airway radials 292 CW 030.

ALTERNATE MISSED APCH FIX
PARADISE PDZ 112.2 Chan 59
078°
258°
R-078

REIL Rwy 8R and 26L MIRL Rwy 8R-26L	FAF to MAP 5.4 NM	2100	4000	PRADO	LIZZE INT POM 13.4 PDZ 9.6	One Minute Holding Pattern
Knots	60 90 120 150 180	VGSI and descent angles not coincident (VGSI Angle 3.76/TCH 18).		HAWNN INT RADAR	079° 3200 259° 4000	
Min:Sec	5:24 3:36 2:42 2:10 1:48	CATEGORY	A	B	C	D
		S-26L	1600-1	595 (600-1)	NA	
		CIRCLING	1680-1	669 (700-1)	NA	