

WAAS CH <b>70624</b> <b>W26A</b>	APP CRS <b>259°</b>	Rwy Idg TDZE <b>1005</b> Apt Elev <b>1011</b>
--	------------------------	---

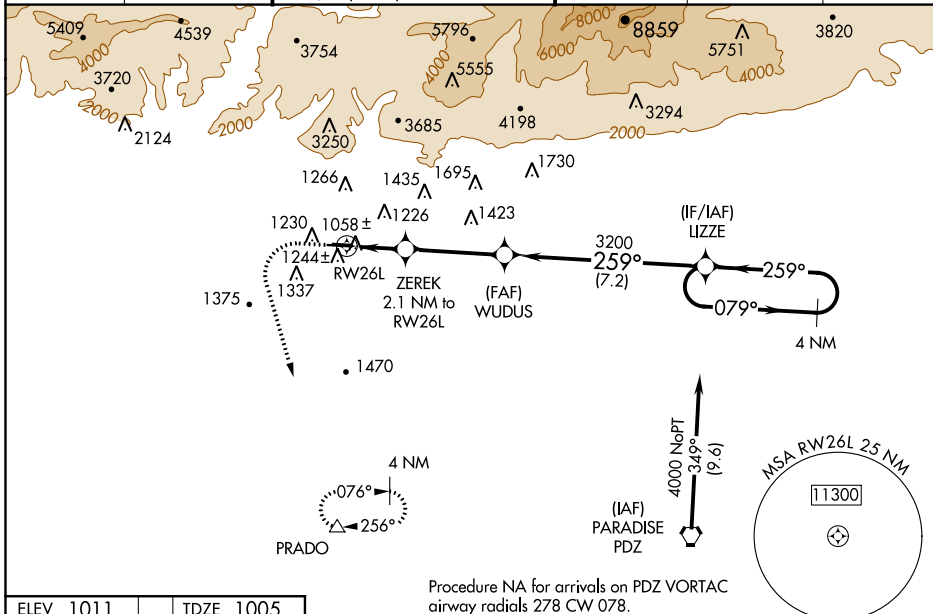
# RNAV (GPS) RWY 26L

BRACKETT FIELD (POC)

**⚠️ NA** Night landing: Rwy 8L NA, Rwy 8R operational VGSI required, remain on or above VGSI glidepath until threshold. For uncompensated Baro-VNAV systems, LNAV/VNAV NA below -17°C (2°F) or above 54°C (130°F). When local altimeter setting not received, use Ontario Intl altimeter setting and increase all DA 31 feet and all MDA 40 feet, increase LPV and LNAV/VNAV all Cats visibility 1/8 mile. DME/DME RNP-0.3 NA. Helicopter visibility reduction below 3/4 SM not authorized. VDP and Baro-VNAV NA with Ontario Intl altimeter setting.

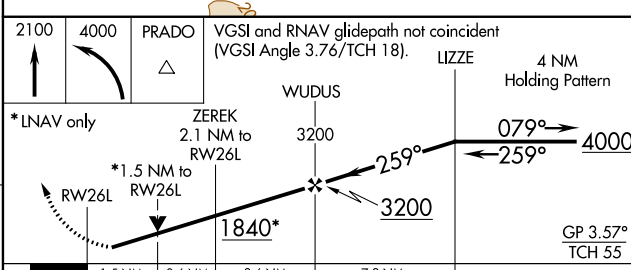
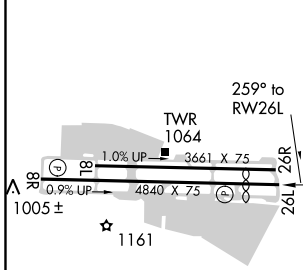
**MISSED APPROACH:** Climb to 2100 then climbing left turn to 4000 direct PRADO and hold.

ATIS <b>124.4</b>	SOCAL APP CON <b>125.5 318.2</b>	BRACKETT TOWER★ RWY 8R/26L <b>118.2 (CTAF)</b> RWY 8L/26R <b>133.3</b>	GND CON <b>125.0</b>	CLNC DEL <b>121.875</b>	UNICOM <b>122.95</b>
----------------------	-------------------------------------	--	-------------------------	----------------------------	-------------------------



Procedure NA for arrivals on PDZ VORTAC airway radials 278 CW 078.

ELEV 1011	TDZE 1005
-----------	-----------



CATEGORY	A	B	C	D
LPV DA	1315-7/8	310 (400-7/8)		NA
LNAV/VNAV DA	1409-1 1/8	404 (400-1 1/8)		NA
LNAV MDA	1620-1	615 (700-1)		NA
CIRCLING	1680-1	669 (700-1)		NA

REIL Rwy 8R and 26L  
MIRL Rwy 8R-26L  
LA VERNE, CALIFORNIA  
Orig-A 29MAY14

34°05'N-117°47'W

# RNAV (GPS) RWY 26L

SW-3, 21 JUN 2018 to 19 JUL 2018

SW-3, 21 JUN 2018 to 19 JUL 2018