


| | | | |
|--|------------------------|-----------------------------|---|
| WAAS CH 82021 W25A | APP CRS 249° | Rwy Idg TDZE Apt Elev | 6000 1038 1062 |
|--|------------------------|-----------------------------|---|

RNAV (GPS) RWY 25

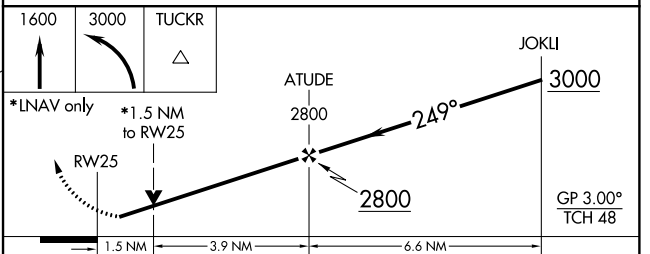
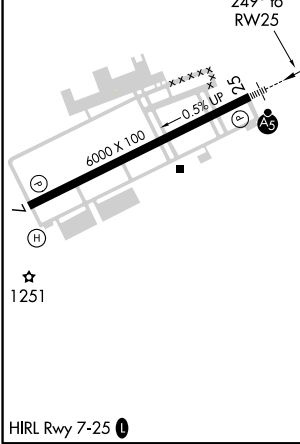
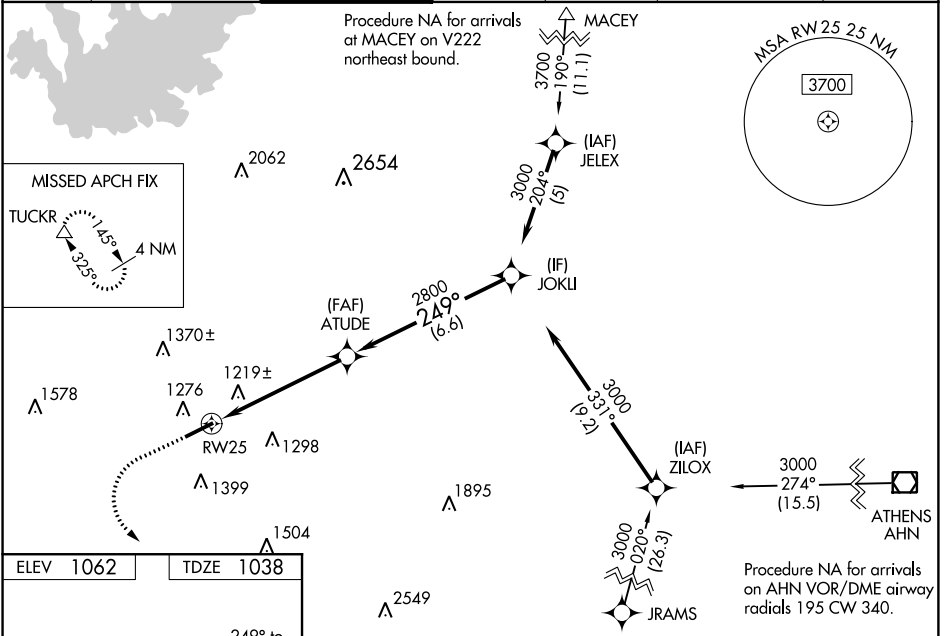
GWINNETT COUNTY-BRISCOE FIELD (LZU)

⚠ Baro-VNAV NA when using Winder altimeter setting. For uncompensated Baro-VNAV systems, LNAV/VNAV NA below -17°C (2°F) or above 54°C (130°F). DME/DME RNP-0.3 NA. When local altimeter setting not received, use Winder altimeter setting and increase all DA 51 feet and all MDA 60 feet; increase LNAV/VNAV all Cats, LNAV Cat C/D and Circling Cat C/D visibility ¼ mile. For inop MALSRS, increase LNAV Cat C/D visibility to 1½ mile. For inop MALSRS when using Winder altimeter setting; increase LNAV/VNAV all Cats visibility to 1½ mile and LNAV Cat C/D visibility to 1½ mile.

MALSRS


MISSED APPROACH:
Climb to 1600 then climbing left turn to 3000 direct TUCKR and hold.

| | | | | | | |
|------------------------|---|---|-------------------------|--------------------------|---|-------------------------|
| ATIS 132.275 | ATLANTA APP CON 126.975 239.275 | GWINNETT TOWER * 124.1 (CTAF)  | GND CON 121.8 | CLNC DEL 121.8 | ATLANTA CLNC DEL 134.0 (When tower closed) | UNICOM 123.05 |
|------------------------|---|---|-------------------------|--------------------------|---|-------------------------|



| CATEGORY | A | B | C | D |
|--------------|--------|-------------|-------------------------|-----------------------|
| LPV DA | | 1238-½ | 200 (200-½) | |
| LNAV/VNAV DA | | 1544-1¼ | 506 (500-1¼) | |
| LNAV MDA | 1540-½ | 502 (500-½) | 1540-1 | 502 (500-1) |
| CIRCLING | 1640-1 | 578 (600-1) | 1640-1½ 578 (600-1½) | 1700-2 638 (700-2) |

SE-4, 21 JUN 2018 to 19 JUL 2018

SE-4, 21 JUN 2018 to 19 JUL 2018